





# Student Handbook

## 2024–2025

 [www.sps.org](http://www.sps.org)  417-523-0000

 1359 E. St. Louis St., Springfield, MO 65802

 [communications@spsmail.org](mailto:communications@spsmail.org)

FOR MORE INFORMATION, VISIT [SPS.ORG](https://www.sps.org)





 @officialSPS

## 2024

### July

July

**4** District Closed

S	M	T	W	TH	F	S
	1	2	3	<b>4</b>	5	6
<b>7</b>	8	9	10	11	12	13
<b>14</b>	15	16	17	18	19	20
<b>21</b>	22	23	24	25	26	27
<b>28</b>	29	30	31			

August

### August

**12-16** Professional Days for all Teachers  
**19** First Day of School  
**21** First Day of School for Wonder Years & Early Childhood SPED  
 First Semester: Aug. 19 - Dec. 20 (81 Days)  
 First Quarter: Aug. 19 - Oct 17 (43 Days)

S	M	T	W	TH	F	S
				1	2	3
<b>4</b>	5	6	7	8	9	10
<b>11</b>	<b>12</b>	<b>13</b>	<b>14</b>	<b>15</b>	<b>16</b>	17
<b>18</b>	<b>19</b>	20	<b>21</b>	22	23	24
<b>25</b>	26	27	28	29	30	31

September

### September

**2** Labor Day - District Closed

S	M	T	W	TH	F	S
<b>1</b>	<b>2</b>	3	4	5	6	7
<b>8</b>	9	10	11	12	13	14
<b>15</b>	16	17	18	19	20	21
<b>22</b>	23	24	25	26	27	28
<b>29</b>	30					

October

### October

**18** Professional Day (Students Out)

End First Quarter: Oct. 17  
 Parent/Teacher Conference Oct. 21 - Nov. 1  
 Second Quarter: Oct. 21 - Dec. 20 (38 Days)

S	M	T	W	TH	F	S
		1	2	3	4	5
<b>6</b>	7	8	9	10	11	12
<b>13</b>	14	15	16	17	<b>18</b>	19
<b>20</b>	21	22	23	24	25	26
<b>27</b>	28	29	30	31		

November

### November

**4** Professional Day (Students Out)  
**5** Professional Day/Election Day (Students Out)  
**25-26** Thanksgiving Break (Students Out)  
**27-29** District Closed

S	M	T	W	TH	F	S
					1	2
<b>3</b>	<b>4</b>	<b>5</b>	6	7	8	9
<b>10</b>	11	12	13	14	15	16
<b>17</b>	18	19	20	21	22	23
<b>24</b>	<b>25</b>	<b>26</b>	<b>27</b>	<b>28</b>	<b>29</b>	30

December

### December

**23-25** District Closed  
**23-30** Winter Break (Students Out)  
**31** District Closed

End Second Quarter: Dec. 20

S	M	T	W	TH	F	S
1	2	3	4	5	6	7
<b>8</b>	9	10	11	12	13	14
<b>15</b>	16	17	18	19	20	21
<b>22</b>	<b>23</b>	<b>24</b>	<b>25</b>	<b>26</b>	<b>27</b>	28
<b>29</b>	<b>30</b>	<b>31</b>				

### January

## 2025

January

S	M	T	W	TH	F	S
			<b>1</b>	<b>2</b>	<b>3</b>	4
<b>5</b>	6	7	8	9	10	11
<b>12</b>	13	14	15	16	17	18
<b>19</b>	<b>20</b>	21	22	23	24	25
<b>26</b>	27	28	29	30	31	

**1** District Closed  
**2** Winter Break (Students Out)  
**3** Professional Day (Students Out)  
**20** Martin Luther King, Jr. Day District Closed

Second Semester: Jan. 6 - May 23 (91 Days)  
 Third Quarter: Jan. 6 - Mar. 13 (47 Days)

### February

S	M	T	W	TH	F	S
						1
<b>2</b>	3	4	5	6	7	8
<b>9</b>	10	11	12	13	14	15
<b>16</b>	<b>17</b>	18	19	20	21	22
<b>23</b>	24	25	26	27	28	

**17** Presidents Day - District Closed

### March

S	M	T	W	TH	F	S
						1
<b>2</b>	3	4	5	6	7	8
<b>9</b>	10	11	12	13	<b>14</b>	15
<b>16</b>	<b>17</b>	<b>18</b>	<b>19</b>	<b>20</b>	<b>21</b>	22
<b>23</b>	24	25	26	27	28	29
<b>30</b>	31					

**14** Professional Day (Students Out)  
**17-20** Spring Break (Students Out)  
**21** District Closed

End Third Quarter: Mar. 13  
 Fourth Quarter: Mar. 24- May 23 (44 Days)

### April

S	M	T	W	TH	F	S
		1	2	3	4	5
<b>6</b>	7	<b>8</b>	9	10	11	12
<b>13</b>	14	15	16	17	18	19
<b>20</b>	21	22	23	24	25	26
<b>27</b>	28	29	30			

**8** No School/Election Day (Students Out)

### May

S	M	T	W	TH	F	S
				1	2	3
<b>4</b>	5	6	7	8	9	10
<b>11</b>	12	13	14	15	16	17
<b>18</b>	19	20	21	22	<b>23</b>	24
<b>25</b>	<b>26</b>	27	28	29	30	31

**23** Last Day of School (2 hour early release)  
**26** Memorial Day - District Closed

End 4th Quarter: May 23

### June

S	M	T	W	TH	F	S
1	2	3	4	5	6	7
<b>8</b>	9	10	11	12	13	14
<b>15</b>	16	17	18	19	20	21
<b>22</b>	23	24	25	26	27	28
<b>29</b>	30					

June

**explore!**

Explore Window To Be Determined

EARLY CHILDHOOD START DATE

START & END TO SCHOOL YEAR

PROFESSIONAL DAY - STUDENTS OUT

DISTRICT CLOSED

BREAK - STUDENTS OUT



## Acknowledgement of Review of Student Handbook and Discipline Code of Conduct

**Student:** \_\_\_\_\_

**ID Number:** \_\_\_\_\_

In accordance with Springfield Public Schools (SPS) Board of Education Policy *JG: Student Discipline* and Strategic Plan *Objective 1.3: Maintain a Positive Classroom Environment Conducive to Teaching and Learning*, the **Discipline Code of Conduct** and the policies and regulations it references are an important part of daily student life, supporting a safe and secure learning environment. It is essential that the school and home work together to ensure that all students meet the high expectations for behavior established in the **Discipline Code of Conduct**.

**Student** \_\_\_\_\_ **Date:** \_\_\_\_\_

**Parent/Guardian** \_\_\_\_\_ **Date:** \_\_\_\_\_

As the parent/guardian of the above student, I have received and reviewed, with my child, the **Student Handbook** including the **Discipline Code Conduct** and the **Electronic Devices** regulations, which outline cell phone use guidelines. I understand that the **Student Handbook** and the policies and regulations it references apply to all students at all times on all Board of Education property, including in school buildings and on school grounds; in all school vehicles; and at all school, school-related, or Board-sponsored activities, school field trips, and school sporting events, whether such activities are held on school property or at locations off school property, including private business or commercial establishments.

### Failure to Return Clause

School district personnel will make three (3) attempts to secure this form (phone call, home visit, etc). Failure to return this form might exclude the student from participating in or attending extracurricular activities.





**Springfield Public Schools  
Student Handbook  
2024-2025**

**Superintendent of Schools:** Dr. Grenita Lathan

**Board of Education:** Ms. Danielle Kincaid, **President**  
Mrs. Judy Brunner, **Vice President**

**Members:**

Mr. Kelly Byrne  
Mrs. Susan Provance  
Mr. Steve Makoski  
Dr. Maryam Mohammadkhani  
Dr. Shurita Thomas-Tate

**Board Secretary:**

Mrs. Tammi Harrington

We want the best education possible for the children of Springfield and know that can only occur by striving to meet high standards. It cannot become a reality without the help and support of the parents and patrons of this District.

We hope this publication of policies, guidelines, and procedures helps you better understand Springfield Public Schools and will result in getting you more involved in your child's education. Both students and parents should study this handbook carefully and then work closely with advisory teachers, counselors, and administrators.

For school board minutes, complete board policies, school links and other information such as calendars, organizational changes, events and many other functions of the District, please visit our website at:

**[www.sps.org](http://www.sps.org)**



## OUR MISSION

SPS is committed to the well-being of each student by providing high-quality academic opportunities.

## OUR VISION

SPS will be the district of choice that equips each student to pursue their goals and highest potential as an engaged contributor to society.

## OUR COMMITMENTS

**Success-Ready Students:** Preparing all students to be college and/or career ready, with an emphasis on each student reaching their full potential.

**Organizational Efficiency and Excellence:** Being responsible leaders and stewards of district resources.

**Collaborative Culture:** Engaging in proactive communication and collaboration with all stakeholders.

**Quality Learning Environments:** Providing safe and secure facilities that optimize learning.

## STRATEGIC PLAN

The Strategic Plan for SPS may be viewed at [www.sps.org/strategicplan](http://www.sps.org/strategicplan).

## TABLE OF CONTENTS

<b>GENERAL INFORMATION</b>	<b>11</b>
Cancellations	11
Earthquake Safety for Missouri's Schools	11
Insurance	12
Every Student Succeeds Act	12
Notice of Nondiscrimination	13
Office Hours	13
Open House	13
Parent-Teacher Conferences	14
PTA/PTSA	14
Public Notices	14
Notice Of Non-Discrimination For Students With Disabilities And Section 504	14
Commitment To Compliance Under The Americans With Disabilities Act	16
Notification Direct Service Claiming – Medicaid	17
FERPA - Notification Under Family Educational Rights And Privacy Act	18
Protection of Pupil Rights Amendment Notice	19
Release of Student Information	20
School Police Services	21
Site Council	21
SPS Choice Programs	21
Staff and Student Harassment (Policy AC)	21
Visitors to the Building	21
Volunteers	22
Wellness Program	22
<b>STUDENT INFORMATION</b>	<b>23</b>
Arrival at School	23
Assemblies	23
Attendance and Absences	23
Bicycles	25
Building Practices	25
Care of School Property	25
Character/Civility Education	25
Closed Lunch Period	25
Communication with Parents	25
Counseling Services	26
Directory Information	26
Dismissal Procedures	26
Dress Code Guidelines (Policy JFCA)	27

Early Dismissal	27
Electronic Devices	27
Email Accounts	27
Emergency Forms	28
Entrance Requirements	28
Enrollment Information	28
eSchoolPlus Home Access Center	28
Explore Program	28
Field Trips	28
Flowers/Balloons	28
Student Meals	29
Fundraising Activities	29
Health Services	29
Health Condition(s) Information	29
Enrollment	30
Illness and Injury	30
Medication Policy	31
Screenings	34
Homebound Education	34
Homeless Student Education	34
Leaving School Early	34
Library Media Center	34
Lost And Found	34
Migrant Student Education	34
Personal Property	34
Procedure for Photos and Interviewing Students	35
Rights and Responsibilities	35
Safe Space Stickers	36
Skateboards, Skates and Scooters	36
Staying Late After School	37
Student Assistance	37
Substance Abuse Prevention Education	37
Supplies	37
Telephones	37
Textbooks/Instructional Materials	37
Title I Programs	37
Transfer Guidelines	38
Transportation	39
Virtual Course Enrollment (MOCAP)	40
Withdrawals from School	40



<b>ELEMENTARY SCHOOL INFORMATION</b>	<b>41</b>
After School Care/Programs	41
Curriculum	41
Elementary Enrollment Procedures	42
Homework	42
Parties	43
Playgrounds	43
Progress Reports	43
School Walking Route Maps	43
 <b>MIDDLE SCHOOL INFORMATION</b>	 <b>44</b>
Activities/Athletics	44
Dances/Socials	45
Grading System	45
Honor Roll	45
Lockers and Locks	45
Physical Education	46
Promotion of Students	46
 <b>HIGH SCHOOL INFORMATION</b>	 <b>47</b>
Activities/Athletics	47
Changing Schedules	47
College Visits	48
Course Syllabus	48
Finals Exemption Requirements	48
Grading System	48
Graduation Requirements (Board Policy IKF)	48
Graduation Attendance Requirements	49
Graduation Exercises (Policy IKFB)	49
Honor Roll	50
ID Badges	50
Lockers and Locks	50
Planning A High School Program of Studies	50
Repeated Courses: Assignment of Grades	50
Use of Motor Vehicles	50

<b>DISCIPLINE</b>	<b>51</b>
Safe Schools Act	51
Student Referral Procedures Administrative Guidelines	52
Student Discipline Administrative Guidelines	53
<b>DISCIPLINE GUIDELINES</b>	<b>54</b>
Behavior Management Process	55
Alcohol/Drugs	56
Possession or Use	56
Sale or Distribution	56
Arson	56
Class I Arson Offense	56
Class II Arson Offense	57
Assaultive Behavior	57
Class I Assaultive Behavior or Class I Fighting Offense	57
Class II Assaultive Behavior or Class II Fighting Offense	58
Threatening to Fight	58
Assaultive Behavior Toward School Personnel or Non-Students	58
Threats of Violence Toward a Person or Property	58
Computer/Electronic Devices, Unauthorized Use	59
Unauthorized Use of a Computer or Tampering with Computer Equipment	59
Class I Inappropriate Use of Electronic Devices	59
Class II Inappropriate Use of Electronic Devices	60
Inappropriate Cell Phone Use	60
Defiance of Authority, Disorderly Conduct, or Disrespect for Authority	61
Defiance of Authority	61
Disorderly Conduct	61
Disrespect for Authority	61
Destruction Of Property/Vandalism	62
Class I Destruction of Property/Vandalism Offense	62
Class II Destruction of Property/Vandalism Offense	62
Group Disorderly Conduct/Promotion of a Fight	62
Group Disorderly Conduct	62
Promotion of a Fight	63
Explosive Devices, Use Or Possession Of	63
Class I Explosive Devices Use or Attempted Use	63
Class II Explosive Devices	63

Falsification of Information	63
Giving False Information/Falsifying School Records/Forgery	63
Filing A False Emergency Report	64
Class I Filing a False Emergency Report Offense	64
Class II Filing a False Emergency Report Offense	64
Harassment	64
Inappropriate Non–Physical Harassment	64
Inappropriate Physical Harassment	65
Investigation into Bullying/Hazing/Harassment Allegation	65
Bullying	65
Hazing	66
Sexual Misconduct	66
Class I Sexual Misconduct	66
Class II Sexual Misconduct	67
Class III Sexual Misconduct	67
Theft	67
Class I Theft Offense	67
Class II Theft Offense	68
Receiving Stolen Property	68
Tobacco	68
Truancy	69
Weapons	69
ID Badge Violations: (High School Only)	69
Students Charged With A Crime	70
Unsportsmanlike/Disruptive Behavior At Athletic Contest Or School Related Activity	70
Inappropriate Language and Disorderly Conduct	70
Fighting, Assaultive Behavior, Throwing Objects or Possession of Inappropriate Objects at Any Activity	71
Drugs/Alcohol Possession or Use	71
Bus Safety Violations	72
Tardies	72
Cheating	72
Academic Honesty/Misuse of Artificial Intelligence	72
Out–Of–Assigned Area	73
Bringing/Using Inappropriate Materials	73
Failure To Serve Detention/ISS	73
Due Process	73
Disciplinary Interventions	73
Disciplinary Actions	74

Interrogations, Interviews and Searches (Policy JFG)	75
Prohibition against Discrimination, Harassment and Retaliation	77
Student Alcohol/Drug Abuse (Policy JFCH)	77
Suspension of Students Charged With a Crime (See Policy JG – Student Discipline)	80
Threats of Violence at School Sites	81
Tobacco and Tobacco Derivatives Use by Students (Refer to Policy AH)	81
Weapons (Policy JFCJ)	81
<b>BOARD OF EDUCATION POLICIES</b>	<b>85</b>
<b>DIRECTORY INFORMATION AND NEWS MEDIA OPT-OUT FORM</b>	<b>87</b>
<b>ACCEPTABLE TECHNOLOGY USE AGREEMENT</b>	<b>89</b>
<b>BLACKBOARD CONNECT NOTIFICATION SYSTEM</b>	<b>93</b>
<b>TRANSCRIPT/RECORDS REQUEST (CURRENT STUDENT)</b>	<b>95</b>
<b>CITIZENSHIP STANDARDS FOR ELIGIBILITY</b>	<b>97</b>

## GENERAL INFORMATION

### **Cancellations**

The district makes every effort to decide whether to cancel school by 5 a.m. so that parents can be alerted as soon as possible. The decision is announced immediately via SPS social media accounts, website, mySPS app, email, and local news media. Automated phone messages will be sent at 6 a.m. to parents who have completed and returned the [Blackboard Connect Student Information Form](#) located at [sps.org/notifications](http://sps.org/notifications). Parents may also opt-in to receive text message alerts on the same form.

### **Earthquake Safety for Missouri's Schools**

**The New Madrid Seismic Zone (NMSZ) Extends 120 Miles Southward** from the area of Charleston, Missouri, and Cairo, Illinois, through New Madrid and Caruthersville, following Interstate 55 to Blytheville and down to Marked Tree, Arkansas. The NMSZ consists of a series of large, ancient faults that are buried beneath thick, soft sediments. These faults cross five state lines and cross the Mississippi River in three places and the Ohio River in two places.

**The New Madrid Seismic Zone and surrounding region is Active, Averaging More than 200 Measured Events per Year** (Magnitude 1.0 or greater), about 20 per month. Tremors large enough to be felt (Magnitude 2.5 – 3.0) are noted every year. The fault releases a shock of 4.0 or more, capable of local minor damage, about every 18 months. Magnitudes of 5.0 or greater occur about once per decade. They can cause significant damage and be felt in several states.

**What Can We Do to Protect Ourselves?** Education, planning, proper building construction, and preparedness are proven means to minimize earthquake losses, deaths, and injuries.

#### **Know What to Do When the Shaking BEGINS:**

- DROP, COVER AND HOLD ON! Move only a few steps to a nearby safe place. Stay indoors until the shaking stops and you're sure it's safe to exit. Stay away from windows.
- In a high-rise building, expect the fire alarms and sprinklers to go off during a quake.
- If you are in bed, hold on and stay there, protecting your head with a pillow.
- If you are outdoors, find a clear spot away from buildings, trees, and power lines. Drop to the ground.
- If you are in a car, slow down and drive to a clear place (as described above). Stay in the car until the shaking stops.

#### **Know What to Do AFTER the Shaking Stops:**

- Check yourself for injuries. Protect yourself from further danger by putting on long pants, a long-sleeved shirt, sturdy shoes, and work gloves.
- Check others for injuries. Give first aid for serious injuries.
- Look for and extinguish small fires. Eliminate fire hazards. Turn off the gas if you smell gas or think it's leaking. (Remember, only a professional should turn it back on.)
- Listen to the radio for instructions.
- Expect aftershocks. Each time you feel one, DROP, COVER, AND HOLD ON!
- Inspect your home for damage. Get everyone out if your home is unsafe.
- Use the telephone only to report life-threatening emergencies.

*The information contained was extracted from the American Red Cross website [http://www.redcross.org/services/prepare/0,1082,0\\_241\\_00.html](http://www.redcross.org/services/prepare/0,1082,0_241_00.html), Missouri State Emergency Management Agency website (<http://sema.dps.mo.gov/EQ.htm>) and the Federal Emergency Management Agency website (<http://www.fema.gov/hazard/earthquake>). This flier could be distributed by School Districts to each student annually to satisfy the requirements of RSMo 160.455.*

## **Insurance**

School districts are not generally held legally liable for accidental injuries sustained by students while at school or while participating in school-related activities.

As a service to students and parents, the District does provide an accidental injury policy for students which can be purchased at a reasonable price. The policy is available on a “school-day basis” or “24-hour basis”.

Detailed information and application forms are made available to students and their parents at the time of enrollment or the first day of school.

## **Every Student Succeeds Act**

Missouri Department of Elementary & Secondary Education Every Student Succeeds Act of 2015 (ESSA)

### **COMPLAINT PROCEDURES**

- 1. What is a complaint under ESSA?** For these purposes, a complaint is an allegation that a local education agency (LEA) or the Missouri Department of Elementary and Secondary Education (the Department) has violated a federal statute or regulation that applies to a program under ESSA.
- 2. Who may file a complaint?** Any individual or organization may file a complaint.
- 3. How can a complaint be filed?** Complaints can be filed with the LEA or with the Department.
- 4. How will a complaint filed with the LEA be investigated?** Complaints filed with the LEA are to be investigated and attempted to be resolved according to locally developed and adopted procedures.
- 5. What happens if a complaint is not resolved at the local level (LEA)?** A complaint not resolved at the local level may be appealed to the Department.
- 6. How can a complaint be filed with the Department?** A complaint filed with the Department must be a written, signed statement that includes: 1. A statement that a requirement that applies to an ESSA program has been violated by the LEA or the Department, and 2. The facts on which the statement is based and the specific requirement allegedly violated.
- 7. How will a complaint filed with the Department be investigated?** The investigation and complaint resolution proceedings will be completed within a time limit of forty calendar days. That time limit can be extended by the agreement of all parties. The following activities will occur in the investigation: 1. Record. A written record of the investigation will be kept. 2. Notification of LEA. The LEA will be notified of the complaint within ten days of the complaint being filed. 3. Resolution at LEA. The LEA will then initiate its local complaint procedures in an effort to first resolve the complaint at the local level. 4. Report by LEA. Within thirty days of the complaint being filed, the LEA will submit a written summary of the LEA investigation and complaint resolution. This report is considered a public record and may be made available to parents, teachers, and other members of the general public. 5. Verification. Within ten days of receiving the written summary of a complaint resolution, the Department will verify the resolution of the complaint through an on-site visit, letter, and/or telephone call(s). 6. Appeal. The complainant or the LEA may appeal the decision of the Department to the U.S. Department of Education.
- 8. How are complaints related to equitable services to private school children handled differently?** If the complaint is an LEA is not providing equitable services for private school children, in addition to the procedures listed in number 7 above, the complaint will also be filed with the U.S. Department of Education, and they will receive all information related to the investigation and resolution of the complaint. Also, appeals to the United States Department of Education must be filed no longer than thirty days following the Departments’ resolution of the complaint (or its failure to resolve the complaint).

**9. How will appeals to the Department be investigated?** The Department will initiate an investigation within ten days, which will be concluded within thirty days from the day of the appeal. An independent on-site investigation may be conducted if the Department determines that it is necessary. The investigation may be continued beyond the thirty day limit at the discretion of the Department. At the conclusion of the investigation, the Department will communicate the decision and reasons for the decision to the complainant and the LEA. Recommendations and details of the decision are to be implemented within fifteen days of the decision being delivered to the LEA.

**10. What happens if a complaint is not resolved at the state level (the Department)?** The complainant or the LEA may appeal the decision of the Department to the United States Department of Education.

ESSA Requirement – Parents have the right to request information regarding the professional qualifications of their student’s classroom teachers. To request information on teacher certification, please contact Human Resources.

**Teacher Certification:** Our District is required to inform you of certain information that you, according to Every Student Succeeds Act of 2015 (Public Law 114-95), have the right to know. Upon your request, our District is required to provide to you, in a timely manner, the following information:

- Whether the teacher has met state qualification and licensing criteria for the grade levels and subject areas in which the teacher provides instruction.
- Whether the teacher is teaching under emergency or other provisional status through which state qualification or licensing criteria have been waived.
- Whether your child is provided services by paraprofessionals and, if so, their qualifications.
- What baccalaureate degree major the teacher has and any other graduate certification or degree held by the teacher, and the field of discipline of the certification.

In addition to the information that parents may request, a building receiving Title I.A funds must provide to each individual parent:

- Information on the level of achievement and academic growth of your student, if applicable and available, on each of the State academic assessments required under Title I.A.
- Timely notice that your student has been assigned, or has been taught for 4 or more consecutive weeks by a teacher who has not met applicable State certification or licensure requirements at the grade level and subject area in which the teacher has been assigned.

### **Notice of Nondiscrimination**

The School District of Springfield R-XII Board of Education is committed to maintaining a workplace and educational environment that is free from discrimination and harassment in admission or access to, or treatment or employment in, its programs, services, activities and facilities. In accordance with law, the district strictly prohibits discrimination and harassment against employees, students or others on the basis of race, color, religion, sex, national origin, ancestry, disability, age, genetic information or any other characteristic protected by law. The School District of Springfield R-XII is an equal opportunity employer. Inquiries regarding compliance with applicable statutes related to may be directed to the:

Chief Human Resources Officer  
1359 East Saint Louis Street, Springfield, MO 65802  
Phone: 417-523-4647 / Fax: 417-523-0197

### **Office Hours**

School office hours are from one-half hour before school starts to one-half hour after school is dismissed.

### **Open House**

Open Houses will be in conjunction with each site’s SPS University. Each school will select a date/time between August 19 – September 13.

## **Parent-Teacher Conferences**

At the end of the first quarter, parents are encouraged to attend a conference with their child's teacher(s) during Parent-Teacher Conference Week. Every attempt is made to provide a time when a parent can attend a conference.

Contact your child's school for a schedule of conference times. Students are dismissed on the final Monday of conference week.

Other conferences may be held during the year to communicate information about a child's progress and behavior. These conferences can be initiated by either the parent or the teacher. Parents who wish to schedule a conference with their child's teacher should call the school to make an appointment. Conferences may be scheduled before school, after school, or during the teacher's planning time.

## **PTA/PTSA**

The Parent-Teacher Association provides liaison services between the home and the school and serves as an advocate for children. All the units are united through the Springfield Council of Parents and Teachers. Both the individual units and the PTA Council sponsor a number of activities to improve education in their schools and for all children.

The PTA operates the Clothing Bank which provides quality used clothing for children in need. Shoes are available through a Shoe Bank sponsored by the Ozark Empire Kiwanis Club. Parents who desire to make use of these services may contact their Principal or school nurse for additional information.

All parents are urged to join the PTA in their child's school. Patrons do not need to have a child in school to join. All people interested in children and education are welcome. For more information go to [sceptamo.com](http://sceptamo.com).

## **Public Notices**

### **1. Notice Of Non-Discrimination For Students With Disabilities And Section 504**

Applicants for admission or employment, students, parents of elementary and secondary school students, employees, sources of referral and applicants for employment, and all professional organizations that have entered into agreements with the School District of Springfield, R-12 ("District") are hereby notified that the District does not discriminate on the basis of race, color, national origin, sex, age, or disability in admission or access to, or treatment or employment in, its programs and activities. In addition, the District provides equal access to the Boy Scouts of America and other designated youth groups.

Any person having inquiries concerning the District's compliance with the laws and regulations implementing Title VI of the Civil Rights Act of 1964 ("Title VI"), Title IX of the Education Amendments of 1972 ("Title IX"), the Age Discrimination in Employment Act, Section 504 of the Rehabilitation Act of 1973 ("Section 504"), Title II of the Americans with Disabilities Act of 1990 ("ADA") or the Boy Scouts of America Equal Access Act, is directed to the Compliance Coordinator listed below, who oversees the District's efforts to comply with the laws and regulations implementing the laws and regulations cited above.

The District has established grievance procedures for persons unable to resolve problems arising under the listed statutes above. The District's Compliance Coordinator will provide information regarding those procedures upon request.

Any person who is unable to resolve a problem or grievance arising under any of the laws and regulations cited above may contact the Office of Civil Rights, Region VII, 8930 Ward Parkway, Suite 2037, Kansas City, Missouri 64114; telephone (816) 268-0550.

All responsible public agencies are required to locate, evaluate, and identify children with disabilities who are under the jurisdiction of the agency, regardless of the severity of the disability, including children attending private schools, children who live outside the District but are attending a private school within the District, highly mobile children, such as migrant and homeless children, children who are wards of the state, and children who are suspected of having a disability and in need of special education even though they are advancing from grade to grade, the District assures it



will provide a free, appropriate public education (“FAPE”) to all eligible children with disabilities between the ages of 3 and 21 who are under its jurisdiction. Special Education Disabilities include autism, deaf/blindness, emotional disorders, hearing impairment and deafness, intellectual disability, multiple disabilities, orthopedic impairment, other health impairments, specific learning disabilities, speech or language impairment, traumatic brain injury, visual impairment/blindness and young child with a developmental delay.

The District provides the following assurance that it will provide information and referral services necessary to assist the State of Missouri in the implementation of early intervention services of infants and toddlers eligible for the Missouri First Steps program.

The District provides the following assurance that personally identifiable information collected, used, or maintained by the agency for the purposes of the identification, evaluation, placement or provision of FAPE of children with disabilities may be inspected and/or reviewed by their parents/guardians. Parents/guardians may request amendment to the educational record if the parent/guardian believes the record is inaccurate, misleading, or violates the privacy or other rights of their child. Parents have the right to file complaints with the U.S. Department of Education or the Missouri Department of Elementary and Secondary Education concerning alleged failures by the District to meet the requirements of the Family Education Rights and Privacy Act (“FERPA”).

The District has developed a Local Compliance Plan for the implementation of State Regulations for the Individuals with Disabilities Education Act (“IDEA”). This plan contains the District’s policies and procedures regarding storage, disclosure to third parties, retention and destruction of personally identifiable information and the District’s assurance that services are provided in compliance with the General Education Provision Act (“GEPA”). This plan may be reviewed during business hours by contacting Ms. Misty Ramsey or Dr. Tanya Rapert, Directors of Special Services, at 1610 East Sunshine Avenue, Springfield, Missouri 65804, (417) 523-7500.

Under Section 504, the District, as a recipient of federal financial assistance from the United States Department of Education and as an operator of a public elementary or secondary education program and/or activity, is required to undertake to identify and locate every qualified person residing in the District who is not receiving a public education; and take appropriate steps to notify disabled personal and their parents or guardians of the District’s duty.

The District assures that it will, pursuant to Section 504, provide a free appropriate public education to each qualified disabled person in the District’s jurisdiction regardless of the nature or severity of the person’s disability. For purposes of Section 504, the provision of an appropriate education is the provision of regular or special and related aids and services that (i) are designed to meet individual educational needs of disabled persons as adequately as the needs of non-disabled persons are met and (ii) are based on adherence to procedures that satisfy the requirements of Section 504 federal regulations.

This notice is provided as required by the Individuals with Disabilities Education Act, Title II of the Americans with Disabilities Act of 1990, and Section 504 of the Rehabilitation Act of 1973. Questions, complaints or requests for additional information regarding the ADA and Section 504 may be directed to the Chief Human Resources Officer, the District’s Compliance Officer, 1359 East St Louis Street, Springfield, Missouri 65802, (417) 523-4647.

This notice will be provided in native languages or alternative formats, e.g. large print, Braille, as needed.

## **2. Commitment To Compliance Under The Americans With Disabilities Act**

In accordance with the requirements of Title II of the Americans with Disabilities Act of 1990 (“ADA”), the School District of Springfield, R-12 (“District”) does not discriminate on the basis of disability against qualified individuals with a disability with respect to the School District’s services, programs or activities.

**Employment:** The District does not discriminate on the basis of disability in its hiring or employment practices. The District complies with the federal regulations under Title I of the ADA (which governs the application of the ADA in the hiring and employment setting).

**Effective Communication:** The District will comply with the ADA with respect to providing auxiliary aids and services leading to effective communication for qualified persons with disabilities so they can participate equally in District programs, services, and activities. These aids and services are designed to make information and communications accessible to people who have impairments, in areas such as speech, hearing, and vision. The District will not place a surcharge on a qualified individual with a disability, or any group of qualified individuals with disabilities, to cover the cost of providing auxiliary aids/services or reasonable modifications of policy (for example, retrieving items from locations that are open to the public but inaccessible to users of wheelchairs).

Anyone who requires an auxiliary aid or service for effective communications, or a modification of policies or procedures to participate in a service, program, or activity of the District should contact Springfield Public Schools Human Resources, whose contact information is listed below. Such contact should be made as soon as possible, but not later than 48 hours before the scheduled event (and, preferably, at least five (5) business days before the event).

**Modifications to Policies and Procedures:** The District will make reasonable modifications to policies and programs to ensure that qualified individuals with disabilities have an equal opportunity to enjoy its services, programs and activities.

The ADA does not require the District to take any action that would fundamentally alter the nature of its programs or services or impose an undue financial or administrative burden.

Complaints that a District service, program, or activity is not accessible to persons with a disability may be directed to the Compliance Coordinator below. In addition, as stated in the District’s Notice of Nondiscrimination, a person who is unable to resolve a problem or grievance arising under Title II of the ADA may contact the Office for Civil Rights, Region VII, 8930 Ward Parkway, Suite 2037, Kansas City, Missouri, 64114; telephone (816) 268-0550.

**Chief Human Resources Officer at Springfield Public Schools**

1359 E. St. Louis Street.  
Springfield, Missouri 65802  
Phone: 417-523-4647  
Fax: 417-523-0391

### **3. Notification Direct Service Claiming – Medicaid**

#### **Insurance - Individual with Disabilities Education Act (IDEA)**

For a number of years Missouri has participated in a Federal program called Medicaid School-Based Services. This program helps school districts by providing partial reimbursement for some medically-related services listed on a student's Individualized Educational Program (IEP). Under the Individual with Disabilities Education Act (IDEA), school districts are permitted to seek payment from public insurance programs such as Medicaid (MO HealthNet in Missouri) for some IEP related services provided at school.

In 2013 the requirements under the Individuals with Disabilities Education Act (IDEA) changed and now school districts are required to provide parents with written notification before they access public insurance for the first time and then every year thereafter. This notification is to inform you of the requirements under IDEA, regarding written notification and consent to access public insurance, such as MO HealthNet.

#### **Do I need to do anything?**

You will be asked to provide a one-time written parental consent to release information from your child's educational records or information about the services your child receives through his or her IEP. This information is needed for the purpose of billing MO HealthNet and seeking partial reimbursement for some medically-related IEP services.

#### **What type of information will be in the consent form?**

The consent form must inform you of the personally identifiable information that may be disclosed (including your child's name, birth date, Medicaid number or other ID, disability, IEP and evaluations, type of service, times and dates of service and progress notes), the purpose of the disclosure (e.g., payment from MO HealthNet) and the agency that will be receiving the information.

#### **What does it mean if I give my consent?**

By consenting, you state that you understand and agree that MO HealthNet insurance will be billed to partially pay the cost of IEP related services and that the necessary information about your child and his or her IEP services may be shared with MO HealthNet Division, a contracted billing agent, and/or a physician to obtain necessary supporting documentation (e.g. physician scripts, referrals) in order for the billing to be done. There will be no cost to you for the services.

#### **Am I required to enroll with MO HealthNet Division (MHD) for public insurance?**

You are not required to sign up for or enroll in public insurance for your child to receive a free appropriate public education, including IEP services.

#### **Will my consent affect my family's MO HealthNet benefits?**

No. Reimbursed services provided by your school district do not limit or reduce lifetime coverage or benefits, change eligibility, affect benefits, count against visit or funding limits in MO HealthNet programs or increase costs to you.

#### **What if I change my mind?**

You have the right to withdraw consent to disclose your child's personally identifiable information to MO HealthNet Division for billing purposes at any time.

#### **Will my consent or refusal to give consent affect my child's IEP services?**

No. Your school district must provide all required IEP services to your child at no cost to you, whether you give consent or refuse to give consent for purposes of the school accessing your MO HealthNet benefits.

#### **What if I have a question?**

Please call your school district's Special Education Department with any questions or concerns. Our School District of Springfield, R-12, and ("District") receives funding from the Medicaid Direct Service Claiming (DSC) program for IEP covered services to eligible children through the Missouri's Medicaid agency – MO HealthNet. This is a state-approved program that allows our District to receive reimbursement from federal funds for providing some health-related covered services to eligible children in the District. Examples of covered services include speech therapy, assistance

with daily living skills, physical therapy, and nursing services. We are required to notify you of our participation and the IDEA regulations stated below.

The District, working with the MO HealthNet, will need to determine if your child is eligible or should become eligible in the school-based Medicaid program. Your written consent indicates that you understand and agree that the District will submit your child's information to MO HealthNet and their authorized agencies to verify eligibility and submit claims for the DSC program. The District may use Medicaid benefits in which a child participates to provide or pay for services documented in the child's Individualized Education Program ("IEP"). Parents are not required to sign up for or enroll in Medicaid to receive IEP services or a free appropriate public education from the District, nor are they responsible for any out-of-pocket expenses for these IEP services. Also, the District's access to these benefits is not allowed if it would have a negative impact on your public insurance.

We will provide the required special education or related services to your child at no cost to you whether or not you grant your written consent. Your consent is voluntary and may be revoked at any time. The District's use of this reimbursement program does not in any way affect or impact other Medicaid benefits to which the child is entitled, including any otherwise eligible services out of the school.

#### **4. FERPA - Notification Under Family Educational Rights And Privacy Act**

The *Family Educational Rights and Privacy Act* (FERPA), a Federal law, requires that the School District of Springfield, R-12, ("District"), with certain exceptions, obtain your written consent prior to the disclosure of personally identifiable information from your child's education records. However, the District may disclose appropriately designated "directory information" without written consent, unless you have advised the District to the contrary in accordance with District procedures. The District complies fully with FERPA, which affords parents/guardians ("parents") and students who are at least age 18 ("eligible students") the following rights:

**Right to Inspect:** Parents or eligible students have the right to inspect and review the student's "educational records," as that term is defined under FERPA, within 45 days of the date upon which the District receives a request for access. The District is not required to provide copies of records unless, for reasons such as great distance, it is impossible for parents or eligible students to review the records. The District may charge a fee for copies.

**Right to Prevent Disclosure:** Parents or eligible students have the right to prevent disclosure of educational records to third parties with certain limited exceptions. The District will attempt to limit the disclosure of information contained in educational records to those instances when prior written consent has been given for the disclosure. However, upon request, the District may also disclose information under the provisions of FERPA that allow disclosure without prior written consent, as well as directory information (unless you have refused to permit such disclosure of directory information), in accordance with FERPA regulations. The District will disclose educational records to school officials who have a legitimate educational interest in the records. Officials include those persons employed by the District, whether paid or unpaid, as an administrator, supervisor, instructor, or support staff member, including health or medical staff; persons retained by or under contract to the District to perform a special task, such as an attorney, auditor, etc. School officials have a legitimate educational interest if the officials are: performing a task related to a student's education; performing a task related to the discipline of a student; providing a service or benefit relating to the student or student's family, such as health care, counseling, job placement, or financial aid; or maintaining the safety and security of the campus.

**Designation of Directory Information:** The District has designated certain information contained in the educational records of its students as directory information for purposes of FERPA. The District considers the following to be directory information:

Student's name; date and place of birth; parents' names; grade level; enrollment status (e.g., full-time or part-time); student identification number; user identification or other unique personal identifier used by the student for the purposes of accessing or communicating in electronic systems as long as that information alone cannot be used to access protected educational records; participation in district-sponsored or district-recognized activities and sports; weight and height of members of athletic teams; dates of attendance; graduation year; degrees, honors and awards

received; artwork or course work displayed by the district; schools or school districts previously attended; and photographs, videotapes, digital images and recorded sound unless such records would be considered harmful or an invasion of privacy.

*Limited Directory Information* – In addition to general directory information, the following information the district maintains about a personally identifiable student may be disclosed to: school officials with a legitimate educational interest; parent groups or booster clubs that are recognized by the Board and are created solely to work with the district, its staff, students and parents and to raise funds for district activities; parents of other students enrolled in the same school as the

student whose information is released; students enrolled in the same school as the student whose information is released; governmental entities including, but not limited to, law enforcement, the juvenile office and the Children's Division (CD) of the Department of Social Services:

The student's address, telephone number and e-mail address and the parents' addresses, telephone numbers and e-mail addresses.

The District may disclose such directory information for any purpose in its discretion without the consent of a parent of a student or an eligible student. Parents of students and eligible students have the right, however, to refuse to permit the designation of any or all of the above information as directory information. In that case, the information will not be disclosed except with the consent of a parent or student, or as otherwise allowed by FERPA. Any parent or student refusing to have any or all of the designated directory information disclosed must file written notification to this effect with the principal of the school which the student attends. In the event a notification of refusal is not filed, the District assumes that neither a parent of a student or an eligible student objects to the release of the directory information designated.

**Military Recruiter Access/Student Recruiting Information:** Upon request of military recruiters, the District is required by law to provide access to secondary students' names, addresses, and telephone listings. However, any secondary student or parent of a secondary student may request that the student's name, address, and telephone listing not be released without prior written consent of the parent. Requests that a student's name, address, and telephone listing not be released to military recruiters must be submitted, in writing, to the Superintendent, School District of Springfield, R-12, 1359 East St. Louis Street, Springfield, Missouri 65802.

**Right to Request Amendment:** Parents or eligible students have the right to request that the District correct any parts of an education record believed to be inaccurate, misleading or otherwise in violation of their rights. A parent or eligible student must submit the request to the site. The request must identify, in writing, the part of the record sought to be corrected and specify why it is inaccurate/misleading. If the District decides not to amend the record, it will notify the parents or eligible student and provide information on the right to a hearing to present evidence that the record should be changed.

**Right to Complain to FERPA Office:** Parents or eligible students have the right to file an external complaint regarding the District's implementation of FERPA, and such complaint may be filed with the Family Policy Compliance Office, U.S. Department of Education, 400 Maryland Avenue, SW, Washington D.C. 20202.

## **5. Protection of Pupil Rights Amendment Notice**

The federal Protection of Pupil Rights Amendment ("PPRA") affords parents certain rights regarding a school district's initiation of certain federally funded surveys, collection and use of information for marketing purposes, and certain physical exams. These include the right to:

*Consent* before students are required to submit to a survey that concerns one or more of the following protected areas ("protected information survey") if the survey is funded in whole or in part by a program of the U.S. Department of Education: Political affiliations or beliefs of the student or student's parent; Mental or psychological problems of the student or student's family; Sex behavior or attitudes; Illegal, anti-social, self-incriminating, or demeaning behavior; Critical appraisals of others with whom respondents have close family relationships; Legally

recognized privileged relationships, such as with lawyers, doctors, or ministers; Religious practices, affiliations, or beliefs of the student or parents; or Income, other than as required by law to determine program eligibility.

*Receive notice and an opportunity to opt a student out of:* any other protected information survey, regardless of funding; any non-emergency, invasive physical exam or screening required as a condition of attendance, administered by the District or its agent, and not necessary to protect the immediate health and safety of a student, except for hearing, vision, or scoliosis screenings, or any physical exam or screening permitted or required under State law; and activities involving collection, disclosure, or use of personal information obtained from students for marketing or to sell or otherwise distribute the information to others.

*Inspect,* upon request and before administration or use: Protected information surveys or students; Instruments used to collect personal information from students for any of the above marketing, sales or other distribution purposes; and Instructional material used as part of the educational curriculum.

These rights transfer from the parents to a student who is 18 years old or an emancipated minor under State law. The District has adopted policies regarding these rights, as well as arrangements to protect student privacy in the administration of protected information surveys and the collection, disclosure, or use of personal information for marketing, sales, or other distribution purposes.

The District will notify parents of these policies at least annually at the start of each school year and after any substantive changes. The District will also directly notify, such as through U.S. Mail or email, parents of students who are scheduled to participate in the specific activities or surveys noted below and will provide an opportunity for the parent to opt his or her child out of participation in the specific activity or survey. The District will make this notification to parents at the beginning of the school year if the District has identified the specific or approximate dates of the activities or surveys at that time. For surveys and activities scheduled after the school year starts, parents will be provided reasonable notification of the planned activities and surveys listed below and be provided an opportunity to opt their child out of such activities and surveys. Parents will also be provided an opportunity to review any pertinent surveys. Following is a list of the specific activities and surveys covered under this requirement: Collection, disclosure, or use of personal information for marketing, sales or other distribution; Administration of any protected information survey not examination or screening as described above. Individuals who believe their rights under the PPRA have been violated may file a complaint with the Family Policy Compliance Office, U.S. Department of Education, 400 Maryland Avenue, SW, Washington D.C. 20202-5920.

### **Release of Student Information**

The District complies with the federal law governing the release of educational records. This law defines the condition that parent permission is required for release of educational records. A form is provided in the back of this handbook if a parent wants to ensure that directory information is NOT released regarding their child.

The District complies with the Health Insurance Portability and Accountability Act (HIPAA) regarding release of health information.

Student Education Records are accessible to:

- school officials, including teachers of the District who have legitimate educational interest in the records
- parents and/or legal guardians
- parents and/or legal guardians of students eighteen (18) years of age or older who are dependent upon their parents as defined by the Internal Revenue Code
- officials of schools in which the student seeks or intends to enroll
- other agencies, institutions, or individuals upon receipt of written release from parent, guardian, or eligible student
- other state and federal offices and agencies as prescribed by law

A record access log is kept as part of the Student Education Record indicating all who have had access except professional staff members of the District.

Student record maintenance is the responsibility of the building Principal. Records are maintained in the school the student attends.

Board Policy JO-1 includes the complete copy of the record policy, review, and hearing procedures.

### **School Police Services**

Springfield Public Schools employs state licensed School Police Officers. The officers are interactive daily in schools across the District. Goals of the program include bridging the gap between the officers and students, increasing positive attitudes toward law enforcement, and in a proactive effort to reduce crime. The officers strive to build a rapport between officers, students, and staff to work toward providing a safer learning environment.

### **SPS Choice Programs**

Springfield Public Schools establishes high expectations for students' academic achievement and provides necessary support to achieve those expectations including access to a variety of innovative learning opportunities to meet a range of learning styles. SPS Choice and Innovation describes programs and strategies developed based on stakeholder input to meet the needs of SPS students.

### **Staff and Student Harassment (Policy AC)**

The School District of Springfield R-XII Board of Education is committed to maintaining a workplace and educational environment that is free from discrimination and harassment in admission or access to, or treatment or employment in, its programs, services, activities and facilities. In accordance with law, the district strictly prohibits discrimination and harassment against employees, students or others on the basis of race, color, religion, sex, national origin, ancestry, disability, age, genetic information or any other characteristic protected by law. The School District of Springfield R-XII is an equal opportunity employer.

**Definition:** Harassment is a form of discrimination, as defined above, that occurs when the school or work environment becomes permeated with intimidation, ridicule or insult that is sufficiently severe or pervasive enough that it unreasonably alters the employment or educational environment.

**Subsequent Action:** All allegations of harassment shall be fully and confidentially investigated and immediate and appropriate corrective or disciplinary action shall be taken. Complaints concerning alleged harassment by an employee of the School District should be made to the Chief Human Resources Officer. Complaints concerning alleged harassment by a student should be made to the student's building Principal. Unresolved complaints of discrimination or harassment can be escalated in accordance with Policy AC.

An employee, supervisor or student who is aware of any harassment directed toward a student or employee of the School District shall immediately report such conduct to the appropriate school official, set forth above. When a complaint alleging harassment is received, an investigation will be conducted by the School District during which every effort shall be made to preserve the confidentiality of the person making the complaint. In determining whether

the alleged conduct constitutes harassment, consideration shall be given to the record of the incident as a whole and to the totality of the circumstances, including the context in which the alleged incidents occurred.

The complaint files containing allegations of harassment shall be separately maintained and shall be confidential to the extent possible under law.

**Grievance Procedure:** Employees who believe that their complaint has not been satisfactorily resolved may utilize the appropriate School District grievance procedure. A student who believes that his or her complaint has not been satisfactorily resolved may utilize the School District's grievance procedure, Board of Education Policy, ACC.

### **Visitors to the Building**

Parents and other interested citizens of the community are welcome to visit the school but they must first report to the school office. Visitors must be screened through the visitor management system in order to receive a pass to visit a

particular class or room in the building. Visits to classrooms should be by appointment with the teacher. A guide will be provided to a visitor when necessary.

No visitor should go into a classroom, study hall, or library before signing in at the Principal's office and obtaining a visitor's pass. *Children not enrolled in the school are not permitted to visit.*

### **Volunteers**

The SPS Volunteer Program provides a variety of services including such activities as reading to children, assisting in libraries, working with children on a one-to-one basis, playing the piano, assisting with the District music festival, and other activities where extra hands and minds can help in the instructional process. All volunteer positions require fingerprinting, Family Care Safety Registry background check, and screening through the visitor management system upon entering a school.

To become a school volunteer, visit [sps.org/volunteer](http://sps.org/volunteer) for more information. If you have further questions, call the SPS Volunteer Coordinator Office at 523-0046 or email [jblake@spsmail.org](mailto:jblake@spsmail.org).

### **Wellness Program**

The District recognizes the relationship between student well-being and improving student achievement. The District will provide developmentally appropriate nutrition, physical education, physical activities, and other areas of the curriculum to promote wellness. The mission of the wellness program is to support our students by providing personal, relevant and engaging Wellness programs; promoting good nutrition, healthy choices, physical education and activity. It is the policy of the School District that staff will provide foods and beverages made available on campus by the District during the school day to be consistent with the USDA Nutrition Guidelines and Standards as well as those that have been developed by the SPS Wellness Policy committee.



# **STUDENT INFORMATION**

## **Arrival at School**

Students should arrive at school in the morning no earlier than 20 minutes prior to the start of school and report to assigned areas. All students should be in class by the school's designated start time.

## **Assemblies**

Assemblies are an important part of the educational program. While some assemblies may be entertaining, their primary aim is to provide educational experiences that cannot normally be provided in a classroom. Since assemblies represent a part of the educational program, attendance is required of all students. Students will be supervised by teachers at assemblies. Students are expected to conduct themselves in a manner which will not disturb others who wish to enjoy the program. The development of attitudes of proper audience behavior is one of the aims of school assemblies.

## **Attendance and Absences**

### **Attendance and Attendance Services**

The purpose of the instructional process in this community is to assure all students an opportunity to receive the best possible education governed only by their abilities and interests. The instructional format for courses offered in Springfield Public Schools requires that students attend classes regularly. This expectation is also reinforced by the compulsory attendance statute of the State of Missouri. Independent study courses and correspondence courses are not offered by our schools.

A comprehensive system of attendance records will be maintained for each student. Each teacher is responsible for the accurate reporting of daily attendance in the classroom. The building Principal is responsible for supplying information to parents in regard to student absences, and for submitting attendance information to the Superintendent's office.

Unreported absences or excessive tardies will be brought to the attention of the home-school counselor who serves each building on an itinerant basis and/or the Attendance Services Supervisor for the District. That person will make the necessary contact with the family and take whatever actions are felt to be appropriate in attempting to correct the problem.

### **Attendance Guidelines**

1. Daily Absence Reporting
  - a. Parents should notify the attendance office each day a student is absent. Students who are not excused from school by parents may be considered truant. If the parent/guardian is unable to contact the office, the student should bring a dated, written note signed by a parent/guardian giving the reason for the absence upon return to school.
  - b. If the parent, for some reason, fails to notify school, the school may contact the parent.
  - c. Students who return to school without a parent's excuse may be considered truant until the parent can be contacted to verify the absence.
  - d. All absences, including those approved in advance by parents or school officials, except those for school-sponsored activities, will count against a student's days absent. The student should be careful in the use of absences because excessive absences may affect a student's class participation grade.
  - e. The school encourages doctor and dental appointments, after school hours, whenever possible, to reduce the number of classes missed for medical reasons.
  - f. Students who leave school during the school day without prior parental consent and without checking out through the appropriate attendance office WILL be considered truant. Students must have parental consent and check out of school through the attendance office to be properly excused.
2. From time to time, events or activities of a specific or peculiar nature may arise that provide great opportunity to students and require extended and/or unusual absences from school. Should student and parents find themselves faced with such an opportunity and desirous of participation, the school staff will cooperate to the extent possible to

assure the opportunity for these activities. When such absences are being planned, the student and/or parent should, well in advance of the absence, contact the school. The purpose of such contact should be to plan a schedule for make-up work.

3. Make-up work is permitted and is graded for full credit for all absences with the exception of truancy. Students are responsible to find out (preferably by contacting their teachers) what class assignments or homework assignments they missed and then complete the work. When absences are anticipated, the student is to contact his/her teacher(s) to determine what assignments are to be completed during the absence. It is the student's responsibility to check with his/her teacher(s) as to work missed during the absence and the procedure to follow. Should the student choose not to contact the teacher(s) within five school days and make arrangements for work missed, the teacher is absolved of any responsibility for the student's negligence in this matter and will record a grade of "F/O" for each of the assignments missed during the absence. All make-up assignments and alternative assignments will be completed within a reasonable time frame to be determined by each teacher.

### **Class Participation Factor**

Up to 10% of the semester grade in any class may be determined by class participation. Class participation may include such factors as attendance, punctuality, student preparation and contributions to the class learning environment, and cooperative attitude. Exceptions to this 10% maximum class participation factor are physical education and fine arts classes. These classes, due to their nature, use a greater class participation factor previously approved.

### **Leaving the School Grounds**

Students are not permitted to leave the school grounds during the school day except with the approval of parents and school officials and then only within policies approved by the Administration and Board of Education.

### **Requests to Leave School**

Requests by parents for a student to be excused from school during the day should be made only when absolutely necessary. When such a request is necessary, the student should bring to the Principal's office a written statement from his/her parents explaining the reason for the request. When absences in such cases begin to interfere seriously with a student's work in school, it may be deemed necessary to confer with parents. When it is known in advance by a student and the parents that it will be necessary to leave school during the day, a written request should be presented to the office in the morning, and in such case the student must have the approval of the Principal or his/her designee before leaving school.

### **School Activities**

Students represent their schools in a variety of athletic and academic activities. When a student serves as an authorized representative of his/her school, the student is not considered absent (except during the Explore Program). Students who choose to participate in extra-curricular activities resulting in classes missed are to make-up all assignments missed. Students must attend school all day on the day of an extracurricular activity in order to be eligible for participation.

### **Suspension**

A student will be suspended from school/class by school authorities as disciplinary action for inappropriate student behavior. Students are allowed to receive credit for make-up work missed due to suspension. Assignments such as major term projects, major exams, final exams, etc., which generally exceed the time reference due to the suspension, should be accepted by a teacher for credit.

### **Tardies**

A student is tardy to school/class if he/she is delayed in getting to school/class on time. The student should report to the office for a tardy pass to his/her first class. Pupils who are frequently tardy, either at the beginning of the day or to classes during the day, may be subject to disciplinary measures. In order to be excused, students must present a signed note from his/her parent/guardian with the date and time the student should be admitted.

### **All Other Absences**

All absences, including those approved in advance by parents or school officials, except those for school-sponsored

activities, will count against a student's days absent. The student should be careful in the use of absences because excessive absences may affect a student's class participation grade.

### **Attendance Areas and Transfers**

Students are expected to attend the school in the attendance area in which they reside unless assigned to some other school by the Superintendent. If a parent wishes to transfer a student to another school, a request must be submitted and approved by the Principal of the transfer school.

Schools may be considered closed to transfers due to various reasons. Please refer to *Transfer Guidelines* at [sps.org/transfers](http://sps.org/transfers) for more information.

Attendance area boundaries may be changed from time to time to allow the District to make the best use of present facilities when enrollment changes make it necessary.

### **Bicycles**

Students may be permitted to ride a bicycle to school. A bicycle rider must obey the same rules as a motorist and a safety helmet should be worn. A bicycle should be in sound mechanical condition and the child instructed in the proper care and use of it. The Principal may advise a child not to ride a bicycle because of a hazard around the school or for disciplinary action. A child who rides a bicycle to school is not permitted to remove it from the parking area during the lunch period. Students should dismount and walk their bicycles to the approved school site for bicycle parking.

### **Building Practices**

Principals have the responsibility to establish rules and practices to address specific needs at each site which are necessary for the safe and/or orderly operation of the school.

### **Care of School Property**

Students will be held responsible for the proper care of all books, supplies, apparatus or equipment furnished by the Board of Education. Students who deface, damage, or lose school property, shall be required to pay for the damage or loss.

### **Character/Civility Education**

Character/Civility education is the intentional, proactive effort by school staff to instill in their students important core, ethical values such as respect for self and others, responsibility, integrity, and self-discipline. It provides long-term solutions that address moral, ethical, and academic issues. Character/Civility education may address such critical concerns as student absenteeism, discipline problems, substance abuse prevention, violence prevention, and poor academic performance. At its best, character/civility education integrates positive values into every aspect of the school day.

### **Closed Lunch Period**

The schools are considered one-session schools, unless otherwise designated by site administrator, with a lunch period of no more than 30 minutes. No student is permitted to leave the school grounds between the officially designated time of opening and closing of the school day except as necessitated by scheduled class activities or when a parent/guardian requests the absence of the student.

### **Communication with Parents**

Timely and effective communication from SPS, teachers and principals supports your efforts to be an active participant in your child's education. To make that easy for you, we are streamlining communication processes to create more consistency in how teachers, principals and the school district communicate with parents.

New this year, schools will use Seesaw or Remind, depending on grade level, to communicate regularly with parents. Examples of regular communications include newsletters, event and activity reminders, safety updates and cancellations. To stay informed during the 2024-2025 school year, watch for information through these key sources:

Source	Audience	Sender
Seesaw app	Grades PreK-5	Principals & teachers
Remind app	Grades 6-12	Principals & teachers
Canvas	Grades K-12	Teachers
Email	Grades PreK-12	Principals, teachers, district, schools, departments, etc.
Automated phone calls and text messages	Grades PreK-12	District, schools, departments, etc.
SportsYou app	Grades 6-12	Coaches, club sponsors, etc.

*Download apps: Use the Apple App Store for iOS devices or Google Play Store for Android devices and search for “Seesaw,” “Remind” and “SportsYou” apps.*

### **Counseling Services**

The District provides comprehensive counseling services for all students in grades Pre-K through 12. Each District school is served by one or more school counselors who are trained to provide prevention and intervention services to students by addressing their academic, personal, social and career development needs. School counselors help students discover talents and abilities, understand and cope with feelings, learn skills for managing their use of time, and develop positive relationships with adults and peers.

The program is considered an integral part of each school’s total educational program. The school counselor may work with students individually or in groups. It is important that each student know his/her school counselor well and should not hesitate to ask for assistance or support. School counselors place a high value on the contribution parents make to their student’s progress in school. Parents are encouraged to contact the school counselor at any time. School counselors are able to make referrals to community organizations for students and families who need assistance with private therapy, behavioral support, and family resources.

### **Directory Information**

Directory information may be prepared for mass release (school yearbook, school directory, athletic programs, summer camps, PTA directory, businesses, churches, etc.) unless parents, guardians, or eligible students indicate they do not wish the information to be disclosed (see back of handbook for disclosure form). Directory information means information contained in an education record of a student that would not generally be considered harmful or an invasion of privacy if disclosed. It includes, but is not limited to: name of student; present address; electronic mail address; telephone number; name of parent and/or guardian; step-parent; sex; photograph; date and place of birth; dates of attendance; grade level; enrollment status (e.g., elementary, secondary); present school or most recent educational agency or institution attended.

### **Dismissal Procedures**

Safe dismissal procedures will be established at the building site. Students should be picked up at dismissal time. If a student is not picked up and the parent cannot be contacted, school police and the police department may be called.

### **Dress Code Guidelines (Policy JFCA)**

Responsibility for the appearance of students enrolled in the District rests with the parents/guardians and the students themselves. They have to determine the manner of dress for their son or daughter, providing that such attire complies with public health standards, meets community decency standards, is not destructive to school property, and does not disrupt the educational process.

The district may require a student to modify his or her dress or hair for safety purposes.

If apparel displays or promotes the use or possession of anything that is in violation of any Board Policy (e.g. tobacco, alcohol and drugs) it is prohibited. When, in the judgment of the Principal, a student's appearance violates this policy, the student may be required to make modifications.

Examples include, but are not limited to:

- Shoes must be worn at all times. Slippers (bedroom or house slippers) are not appropriate footwear.
- Coats or jackets shall not be worn/used in a disruptive manner by students.
- T-shirts and/or other apparel will not contain profanity, obscenities, suggestive, or provocative statements, statements that cause disruption and uncivil conduct in school, drug, alcohol symbols, advertisements, or gang dress symbols are not to be worn.
- Clothing that promotes disruptive behavior of other students is not allowed.
- Sunglasses are not to be worn in the school building.
- Chains attached to wallets or used as a fashion accessory are not to be worn in the school building or on school grounds.
- Strapless, backless, and revealing tops, or clothing that is revealing are not to be worn in the school building.
- Visibly showing your underwear and/or undergarments is not allowed in the building.
- Overly bulky or overly loose clothing including coats that may conceal a weapon or have been used to establish affiliation with groups or gangs whose activities or activities believed to involve intimidation, violence, or other illegal activities will not be permitted at school or school activities due to their disruptive nature on the school climate and educational process.
- Pants should be worn at the waist and not allowed to sag.

### **Early Dismissal**

If it becomes necessary to dismiss school early, students will be sent home by their normal transportation routine unless otherwise indicated on the emergency form. Phone numbers and procedures should be kept up-to-date.

### **Electronic Devices**

At the elementary school level, the possession of laser pointers and other unsafe electronic items are prohibited in all school buildings. All other electronic devices, such as, but not limited to, cellular phones, headphones, and wireless earbuds, should be stored out of view. The school district will not be responsible for lost or stolen items.

At the middle and high school levels, the possession of laser pointers and other unsafe electronic items are prohibited in all school buildings. All other electronic devices, such as, but not limited to, cellular phones, headphones, wireless earbuds, smart watches may be in the student's possession as long as they are not disruptive to the educational process or in violation of site use procedures. The school district will not be responsible for lost or stolen items.

### **Email Accounts**

Every student in grades K-12 will be issued a Google Workspace for Education account. All students in grades 3-12 may be issued a student email account. This account will be used for peer and teacher collaboration and use with various software. Springfield Public Schools will provide specific training on safe and ethical use of email prior to issuing the accounts and if you wish to have your student opt out of having an email account, please contact one of your children's building administrators.

## **Emergency Forms**

Student emergency forms need to be kept up-to-date throughout the year. Call the school office when changes occur.

## **Entrance Requirements**

All students entering Springfield Public Schools for the first time must have:

- Proof of residence within the district.
- Proof that they have been immunized according to Missouri state immunization law requirements.

## **Enrollment Information**

The public schools of Springfield are open to all children between five and twenty-one years of age whose parent(s) or guardian(s) reside within the boundaries of the school district.

## **eSchoolPlus Home Access Center**

eSchoolPLUS Home Access Center is a service that provides parents and students with a means of accessing school information via the internet. This information includes:

- Student Schedule
- Student Demographics
- Attendance Record
- Classwork Information/Student Grades (if applicable) in Individual Classes
- Grade Appropriate Standardized Test Scores

To find out more information about eSchoolPLUS Home Access Center, please contact your child's school.

## **Explore Program**

Explore is Springfield Public Schools' summer learning experience. Explore is available to students in grades K-12 at no cost, throughout June and July. Explore offers exciting programming which includes project-based and experiential learning opportunities. Breakfast and lunch are available during seated Explore in accordance with federal guidelines. Transportation is available for bus eligible students.

## **Field Trips**

Field and activity trips often enhance the program of instruction and add much to the education of a student. Trips may be authorized by the Principal when the activities contribute substantially to the achievement of desirable educational goals. All field trips should be planned with an educational purpose, and in regard to a unit of study.

Trips may have announced qualifications attached to determine who may participate. If a student has not demonstrated positive citizenship, they will be denied the privilege to participate. Students denied the opportunity to participate in trips during the school day must remain at school and complete alternative assignments. Trips are a privilege to be enjoyed by ALL students who choose to be responsible school citizens.

Each student who goes on a field trip must have prior written parental consent. Parent/guardian should notify the school nurse or health services of any health/medical condition(s) requiring management on the field trip.

## **Flowers/Balloons, etc.**

The practice of sending flowers, balloons, and other such remembrances to friends and family at school can be disruptive. Therefore, such deliveries at school are discouraged and banned at some sites.

In the event that such remembrances are delivered at school, they will be held in the office until the end of the school day. Students may claim their delivery at the close of school. If you have a question concerning these items, contact your student's school.

## Student Meals

Springfield Public Schools participates in the Free and Reduced Priced Meals Program authorized through the U.S. Department of Agriculture. The standards of eligibility for student participation are those of the U.S. Department of Agriculture. <https://www.sps.org/Page/2368>

In accordance with federal civil rights law and U.S. Department of Agriculture (USDA) civil rights regulations and policies, this institution is prohibited from discriminating on the basis of race, color, national origin, sex (including gender identity and sexual orientation), disability, age, or reprisal or retaliation for prior civil rights activity.

Program information may be made available in languages other than English. Persons with disabilities who require alternative means of communication to obtain program information (e.g., Braille, large print, audiotope, American Sign Language), should contact the responsible state or local agency that administers the program or USDA's TARGET Center at (202) 720-2600 (voice and TTY) or contact USDA through the Federal Relay Service at (800) 877-8339.

To file a program discrimination complaint, a Complainant should complete a Form AD-3027, USDA Program Discrimination Complaint Form which can be obtained online [here](#), from any USDA office, by calling (866) 632-9992, or by writing a letter addressed to USDA. The letter must contain the complainant's name, address, telephone number, and a written description of the alleged discriminatory action in sufficient detail to inform the Assistant Secretary for Civil Rights (ASCR) about the nature and date of an alleged civil rights violation. The completed AD-3027 form or letter must be submitted to USDA by: 1) mail: U.S. Department of Agriculture, Office of the Assistant Secretary for Civil Rights, 1400 Independence Avenue, SW, Washington, D.C. 20250-9410; or 2) fax: (833) 256-1665 or (202) 690-7442; or 3) email: [program.intake@usda.gov](mailto:program.intake@usda.gov)

This institution is an equal opportunity provider.

Information relative to eligibility and application forms are mailed to each household that is not Direct Certified, during the summer or are provided at the time of enrollment. Information and forms are always available at each school or are available at [sps.org/nutrition](https://sps.org/nutrition). . **A new Free Reduced meal application must be filled out each year to qualify for benefits (unless the student is directly certified).**

## Unpaid Meal Charge Procedure

***For more specific information, please refer to Administrative Procedure EF-API on the Nutrition Services Website***

Springfield Public Schools recognizes adequate nutrition is essential for student's mental, physical and academic growth. All children (grades K-12) participating in the national school breakfast program and the national school lunch program, whether free, reduced or paid rate will receive a full reimbursable breakfast and/or lunch meal that meets USDA requirements regardless if they do not have adequate money in their student accounts or in hand to cover the cost of the meal at the time of service. If a student does not have adequate money to cover the cost of a meal, they will be allowed to charge the cost of a full reimbursable meal. No student regardless of eligibility will be allowed to purchase ala carte items if the student has a deficit balance, even if they have cash. They must pay their lunch account balance before purchasing a la carte items. Students and parents will be notified of the deficit balance of their account in person, by phone, by USPS mail, or email. A full copy of the [Meal Charge Policy](#) and the free and reduced meal benefit application is available at [sps.org/nutrition](https://sps.org/nutrition). A new free and reduced meal benefit application must be filled out each year to receive benefits (unless the student is directly certified).

## Fundraising Activities

Fundraising projects must be approved by the Principal and must have a designated purpose prior to the beginning of sales. The projects must be planned and carried out in cooperation with the Principal.

Except for fundraisers sponsored by a school organization and approved by the administration, no items may be sold or traded on the school premises or on the buses.

## Health Services

A professional, licensed nurse is assigned to each school and is knowledgeable in providing first aid, medication administration, appropriate screenings, illness and disease assessment, medical and dental referrals and more.

## Health Condition(s) Information

The following guidelines should be followed concerning any students with special health conditions/concerns:

A “Student Health Inventory” form should be completed by parent/guardian at time of enrollment and updated annually or as needed.

- Parent/guardian should notify the school nurse or principal of any health concern that could require emergency services, interfere with the student’s education process or require interventions throughout the school day.
- Students requiring medical accommodations throughout the school day (including, but not limited to: physical education, dietary conditions, physical limitations, and/or medical interventions) must have on file a statement from their licensed medical provider stating such each school year.
- It is strongly encouraged that parent(s)/guardian(s) follow a pattern of having regular medical and dental screenings for their child.

## Enrollment

Missouri State Statute requires all students to have on file evidence of compliance in relation to immunizations prior to attending school (See Policy JHCB). Parents/guardians should bring immunization records or proof of exemption at time of enrollment and as additional immunizations are required by state law.

## Illness and Injury

Students with the following signs or symptoms of communicable disease, must remain home for 24 hours after resolution of signs/symptoms, without medication to resolve the symptoms, or until cleared to return by medical provider:

- Fever - temperature of 100.4 degrees or greater
- Symptoms related to possible communicable disease (skin rashes, redness of eye(s), swollen glands, etc.)
- Excessive drainage from eyes, ears, persistent earache, constant cough; or painful sore throat/swollen glands
- Students with (or having the potential to transmit) an acute infectious disease or parasite

Students who have taken any fever-reducing medications such as Tylenol or Ibuprofen in the past 24 hours must stay home until they are fever-free without the use of medication for 24 hours.

## What happens if my child is sent home from school?

A student will be sent home with any of the following:

- Temperature of 100.4 degrees or more
- Nausea, vomiting, and/or diarrhea
- Symptoms related to possible communicable disease (skin rashes, redness of eye(s), swollen glands, etc.)
- Excessive drainage from eyes, ears, persistent earache, constant cough; or painful sore throat/swollen glands
- Students with (or having the potential to transmit) an acute infectious disease or parasite
- Head lice and/or nits

*If a student is sent home from school due to illness, the student must remain at home for the full school day following the day dismissed. In addition, the student must be symptom free without administration of any fever reducing medications or other medications to relieve symptoms for at least 24 hours before returning to school.*

Students returning to school after injury, including concussion and/or surgery with crutches, casts or slings should present a physician release to return to school along with a written request for any necessary modifications or accommodations.

Please discuss any questions regarding when to return to school with the school nurse and/or contact Health Services.



### **Head Lice Absence/Exclusion**

It is the expectation of Springfield Public Schools that students excluded for head lice/nits should be treated immediately and return promptly back to school. Students should not stay home for an extended period related to head lice.

When initially excluding a student for head lice, the school nurse or designee will notify the student's parent/guardian to pick up the child and will provide treatment instructions to the parent/guardian. The student may return to school after treatment and nit removal (This could be the same day of exclusion). Upon return to school, the school nurse or designee will check the student's hair before the student can return to class. If lice or nits are still present, the school nurse or designee will send the student home for further treatment.

If the student does not return to school on the day following exclusion for head lice, the Attendance Advisor will contact the parent/guardian and/or will make a home visit

Absences for students not returning on the day following the initial head lice exclusion will be coded Elective.

Students becoming ill or injured at school should ask the staff in charge to send them to the school nurse or designee. Parents/guardians (or emergency contact individuals) of students who become seriously ill or injured during the school day will be notified. Emergency telephone numbers must be available and kept current. In the event of a serious accident or illness where the parent/guardian or other emergency contact individual(s) cannot be reached, an ambulance will be called and the student will be transported to the nearest hospital emergency room. When it seems advisable, the student will be accompanied by a staff member. Additional staff will continue to attempt to reach the student's parent/guardian. Parent(s)/guardian(s) are held responsible for any costs involved.

### **Medication Administration in the School Setting**

The district is not legally obligated to administer medication to students unless specifically included in a Section 504 plan or an individualized education plan (IEP). Parents/Guardians are encouraged to submit any relevant information regarding the medications their student needs, including a diabetes medical management plan or other information the district may use to develop an IEP, Section 504 Plan or individualized health plan (IHP). The district will review all information submitted by the parents/guardians and work with them to create a plan to meet the student's medical needs while at school or school activities. The district retains the right to reject requests for administering medication unless required by law to do so. The parent/guardian must assume responsibility for informing district personnel of any change in the student's health or change in medication.

The district will not administer any medication that is not regulated by the U.S. Food and Drug Administration. The district shall not knowingly administer medications in an amount exceeding the recommended daily dosage listed in the *Physician's Desk Reference (PDR)* or other recognized medical or pharmaceutical text. The district may also refuse to administer any medication for other reasons listed in the policy. Alternative arrangements may be made by the parent/guardian for administration of medication to their child. The principal or designee may arrange for the parent/guardian to administer medications to their child at school.

District personnel will not knowingly administer the first dose of any medication except for the medications that are only used in an emergency situation. The student should be under the care of the parent/guardian for a minimum of two hours after the first dose of any new medication prior to the student attending school.

The principal and nurse of a school are responsible for safe medication procedures that include:

- Communication to parents/guardians regarding the medication policy.
- Provision of safe, locked storage of medication to prevent misuse or accidental ingestion.
- Education and supervision of personnel designated to administer medications on the proper use of medications, proper procedures for administering medications, effects of medications and proper disposal of unused medications and/or syringes.

In accordance with law, any trained or qualified employee will be held harmless and immune from civil liability for administering medication in good faith and according to standard medical practices. A qualified employee is one who has been trained annually by the school nurse to administer medication according to standard medical practices.

#### Early Childhood, Elementary and Middle School Prescription Medication Guidelines

The student's authorized prescriber shall provide a written request that the student be given medication during school hours. The request shall state the name of the student, name of the medication, date prescribed, diagnosis, dosage, frequency of administration, route of administration, termination date for administering the medication and the authorized prescriber's name. When possible, the authorized prescriber should state any adverse effects and any applicable emergency instructions.

In lieu of the authorized prescriber's written request, the district may accept a prescription label properly affixed to the medication in question. The label must contain the name of the student, name of the medication, date, dosage, frequency of administration, route of administration and authorized prescriber's name.

Unless otherwise authorized in this policy, the parent/guardian will provide a written request that the district comply with the authorized prescriber's request to give medication.

The medication must be in the original container and be a current prescription with a proper label. A parent/guardian or responsible adult shall deliver the medication to the school in the current prescription bottle or original container.

#### Early Childhood, Elementary and Middle School Over-the-Counter Medication Guidelines

Students are not to bring any over-the-counter medication to school. Over-the-counter medications must be delivered by a parent/guardian or responsible adult in the original container and will be administered according to the affixed instructions on the label unless an authorized prescriber requests in writing that the medication be administered differently.

Three doses of over-the-counter medications may be given at school with written permission obtained from the parent/guardian. Administration of over-the-counter medications beyond three doses shall require a written order from the student's authorized prescriber. Administration of over-the-counter medications may be delegated to a qualified person following the nurse's assessment that the medication is appropriate and indicated in each instance.

The written order for medication must include the name of the medication, time interval, dosage, route of administration, specific indications for administration of the medication and any contraindication for giving the medication. Unless otherwise authorized in this policy, written permission must be obtained from a parent/guardian to administer medications that have been ordered by the authorized prescriber. This permission must be renewed at least annually.

The parent/guardian will be notified, in advance when possible, when over-the-counter medications are administered. District personnel do not provide any personal medications to students at any time.

### High School Prescription Medication Guidelines

The student's authorized prescriber shall provide a written request that the student be given medication during school hours. The request shall state the name of the student, name of the medication, date prescribed, diagnosis, dosage, frequency of administration, route of administration, termination date for administering the medication and the authorized prescriber's name. When possible, the authorized prescriber should state any adverse effects and any applicable emergency instructions.

In lieu of the authorized prescriber's written request, the district may accept a prescription label properly affixed to the medication in question. The label must contain the name of the student, name of the medication, date, dosage, frequency of administration, route of administration and authorized prescriber's name.

Unless otherwise authorized in this policy, the parent/guardian will provide a written request that the district comply with the authorized prescriber's request to give medication.

Prescription medication that is to be taken for two weeks or less may be carried and self-administered by the student after receipt of written permission by a parent/guardian. Only a daily dose may be carried, and it must be in the prescription bottle or original container. However, controlled substances may not be carried or self-administered during school hours, on district grounds, while on district transportation or during district-sponsored activities. A parent/guardian must bring these medications to the school nurse.

Secondary students taking prescription medication on a daily basis for longer than two weeks must have a written request from the authorized prescriber, and the medication must be kept in a locked cabinet in the nurse's office.

### High School Over-the-Counter Medication Guidelines

High school students may carry and self-administer a daily dose of over-the-counter medication if a parent's/guardian's written request is on file in the nurse's office. Over-the-counter medication that is to be given by the nurse must have a written request from an authorized prescriber on file in the nurse's office if more than three doses are to be given during the school year. The medication must be in the original container. District personnel do not provide any non-prescription medications at any time to students.

### Possession and Self-Administration of Medication (K-12)

The district will permit a student to possess and self-administer medications in accordance with an IEP or Section 504 plan or in accordance with state law allowing students to possess and self-administer medications for a chronic health condition. Permission to possess and self-administer medications may be revisited if there is evidence that the student is not handling or administering the medication appropriately or that the student's actions may be harming his or her own health or the health and safety of other persons. Such permission is required for students to possess and self-administer medications while at school, at a district-sponsored activity and on district-sponsored transportation. Such permission shall be effective only for the same school and school year for which it is granted.

### Medication by Injection (Pre-K-12)

An individual healthcare plan (IHP) and emergency action plan (EAP) will be developed for all students with a known health condition such as allergies or diabetes that requires medication by injection (e.g., epinephrine, glucagon or insulin). The IHP and EAP will include the authorized prescriber's orders and parent/guardian authorization and

### Emergency Medications

All student-occupied buildings in this district are equipped with prefilled epinephrine auto syringes and asthma-related rescue medications. Additionally, all middle and high schools in the district are equipped with naloxone. The school nurse or another employee trained and supervised by the school nurse may administer this medication when they believe, based on training, that a student is having a serious or life-threatening reaction or episode. A prescription or written permission from a parent/guardian is not necessary to administer these medications in an emergency situation.

Epinephrine, asthma-related rescue medications, and naloxone will be administered only in accordance with written protocols provided by an authorized prescriber as indicated in the EAP or per district policy or procedure. Naloxone (brand name Narcan) will be administered by nurses and other trained employees to students suspected of having an opioid-related drug overdose. When any student exhibits symptoms of anaphylactic shock, emergency medical services shall be called.

## **Consequences**

Students who possess or consume medications in violation of this policy while on district grounds, on district transportation or during a district activity may be disciplined up to and including suspension or expulsion. Employees who violate this policy may be disciplined up to and including termination. For complete Board Policy see Policy JHCD, *Administration Medications to Students at School*.

## **Screenings**

Vision, hearing, and dental screenings are provided for students in kindergarten, first, third and fifth grade and for any student referred by a teacher or parent. Parent/guardian should notify the school nurse or Health Services if choosing not to allow child(ren) to participate in screenings.

## **Homebound Education**

Homebound services may be provided virtually or in person for any student who cannot attend regular classes for an extended period of time due to illness or injury (grades K-12). To qualify, a student must have a medical/health condition that prohibits school attendance for at least 10 consecutive school days or more. Physicians MD, DO, Psychiatrist, Psychologist or School Psychologist must complete the homebound application. Nurse Practitioners, Physician Assistants or Chiropractors cannot sign a homebound application. For more information, contact the Family Support Services Department.

## **Homeless Student Education**

This program operates under the mandates and guidance of federal law, The McKinney-Vento Homeless Assistance Act and is designed to eliminate barriers to education for students who lack a fixed, regular, and adequate nighttime residence. Any student identified within this program is eligible for educational protections and supports including but not limited to District provided transportation for the purpose of full and consistent participation in education and related activities.

## **Leaving School Early**

If a student must leave during the school day, a parent or guardian must contact a staff member in the office. Parents MUST come into the front office to check students out of school, unless prior arrangements have been made.

## **Library Media Center**

Each school has a library containing print and digital media for recreational reading and curricular support. It is staffed by a certified library media specialist. Materials are carefully selected by the library media specialist with input from staff and students. New resources are purchased every year to maintain a current collection and provide sufficient resource materials for all curricular areas and reading levels. Library media specialists teach students skills of how to inquire, locate, analyze, use, and apply information. Students are encouraged to check materials out from the library, and are expected to be responsible for the care and return of those materials.

## **Lost And Found**

The lost and found department is maintained through the general office. Students who either find or lose articles should report to the office. The loss of property may be minimized by placing the owner's name on every article. Unclaimed items are periodically collected and donated to the PTA Clothing Bank.

## **Personal Property**

Students are strongly discouraged from bringing personal property to school except when absolutely necessary. Students should not bring large amounts of money or other items of value to school. Personal property which must be brought to school should be locked in the student's locker or with them at all times. Personal property including purses should not be left unattended or unsecured at any time. *NOTE: The school is not responsible for items that are lost, stolen, and/or damaged.*

### **Procedure for Photographing and Interviewing Students**

1. At the beginning of the school year, parents/guardians should review the Directory Information and News Media Opt-Out Form printed in the student handbook. If a parent/guardian does not want their child to be interviewed or photographed by news media, this form must be signed by a parent/guardian and be returned to the school office.
2. All students who appear in student directories, yearbooks or other school publications may be photographed, videotaped, interviewed or recorded by school and commercial broadcast and print media unless parents have signed and returned the Directory Information and News Media Opt-Out Form.
3. All student athletes, participants in music, debate and other school-related extracurricular activities consent to being photographed, videotaped, interviewed and/or recorded by the news media as a part of their participation.
4. When a media request involves a sensitive issue, the Communications Office may request explicit parental permission before allowing students to be interviewed or photographed. These instances will be determined in consultation with the school principal.

*NOTE: The opt-out form does not protect a student from being photographed, videotaped, interviewed or recorded at public events such as assemblies, athletic events, graduation, theater productions, concerts and competitions.*

### **Rights and Responsibilities**

Realizing the optimal success comes only from an atmosphere of mutual respect and cooperation, the following rights are guaranteed to students, parents, and teachers in Springfield Public Schools. We also believe that every right carries certain responsibilities.

#### **Students have the right to:**

- 1.1 have the opportunity for a free public education in the most appropriate learning environment at all levels.
- 2.1 be treated with respect and dignity and learn in an atmosphere free from bias, prejudice, and inappropriate discrimination.
- 3.1 the opportunity for freedom of expression.
- 4.1 due process of law.
- 5.1 reasonable and fair treatment which does not violate individual rights.
- 6.1 expect that the school environment will be a safe and secure place free from disruption.
- 7.1 influence the formation of District policy either as an individual or as part of an organization.

#### **Students have the responsibility to:**

- 1.2 attend school regularly and strive for academic growth by participating to their utmost ability.
- 2.2 respect the rights, dignity, and worth of every individual and contribute toward a positive school climate.
- 3.2 express themselves in a manner that respects the rights of others.
- 4.2 be informed of and seek changes in the District practices, policies, and regulations in an orderly, responsible manner and through District-approved channels.
- 5.2 be aware of all rules, regulations and standards for student behavior and conduct themselves accordingly so as to promote the educational process.
- 6.2 refrain from conduct that endangers property, safety, or health of others or is disruptive.
- 7.2 be informed of and assist in the implementation of District policy.

#### **Parents have the right to:**

- 1.1 have access to all information concerning practices, policies and decisions as relates to instruction, health, discipline and extra-curricular activities.
- 2.1 expect an appropriate education for their child.
- 3.1 expect appropriate communication from the school concerning issues related to instruction, health, discipline and extra-curricular activities.
- 4.1 know that District policy and site decisions will be made free from bias, prejudice and inappropriate discrimination.
- 5.1 expect a positive physical and psychological climate conducive to learning free from non-instructional disruption.
- 6.1 expect the District to provide a safe learning environment for their child.
- 7.1 influence the formation of District policy either as an individual or as part of an organization.

**Parents have the responsibility to:**

- 1.2 become aware and knowledgeable of District practices, policies and decisions as relates to instruction, health, discipline and extra-curricular activities.
- 2.2 support the District in its efforts to provide an appropriate education for their child.
- 3.2 notify the school when there are possible issues related to instruction, health, discipline and extra-curricular activities.
- 4.2 respect the rights, privileges and differences of others and encourage this in their children.
- 5.2 actively encourage their child's cooperation in promoting a positive physical and psychological climate and pursue change when needed.
- 6.2 encourage their child to engage in conduct that protects property, safety or health of others.
- 7.2 be informed of and assist in the implementation of District policy.

**Teachers have the right to:**

- 1.1 determine appropriate teaching methods, activities and materials to accomplish District curriculum objectives.
- 2.1 be treated with respect by students, parents and school personnel without bias, prejudice or inappropriate discrimination.
- 3.1 expect students to maintain self-discipline and control.
- 4.1 expect actions to be taken that reduce disruptions detrimental to the learning atmosphere, including student removal when necessary.
- 5.1 work in an atmosphere and environment that are safe and secure.
- 6.1 influence the formation of District policy either as an individual or as part of the teacher organization of his or her choice.
- 7.1 be evaluated in a fair and consistent manner in accordance with District policy.

**Teachers have the responsibility to:**

- 1.2 select and implement teaching strategies that maximize opportunities for all children to learn.
- 2.2 enhance the self-esteem of others by treating all with respect.
- 3.2 model and foster behaviors which will increase student self-discipline and internal control.
- 4.2 maintain an orderly classroom atmosphere that is conducive to learning.
- 5.2 monitor the school environment to ensure that it is safe and secure.
- 6.2 be informed of and assist in the implementation of District policy.
- 7.2 fulfill job requirements and utilize the evaluation process as an opportunity for improvement of performance.

Corporal punishment is the use of physical force as a method of correcting student behavior. No person employed by or volunteering on behalf of the School District of Springfield R-XII shall administer corporal punishment or cause corporal punishment to be administered upon a student attending district schools.

A staff member may, however, use reasonable physical force against a student for the protection of the student or other persons or to protect property. Restraint of students in accordance with the district's policy on student seclusion, isolation and restraint is not a violation of this policy

**Safe Space Stickers**

While every SPS classroom is intended to be a safe space for all students, some staff may choose to display the district-provided safe space sticker on the outside of their classroom or office door. This sticker indicates that the staff person has been trained, and is available, to connect students to resources in a time of need.

**Skateboards, Skates and Scooters**

In order to minimize the potential for student accidents and insurance risks, skateboards, skates (including shoes with rolling wheels such as "heelys") and scooters should not be operated at school or on school property at any time.

**Staying Late After School**

After school, students should only be in the building for staff supervised activities. Teachers are available to work with students and conference with parents until 30 minutes after dismissal. If it is necessary for students to occasionally wait for a ride home, students are to wait near the front entrance. Thirty minutes after dismissal, students who are not in a supervised activity (sports, club meetings, working with a specific teacher, etc.) are to be out of the building. Students should have transportation available within 30 minutes after all student activities.

**Student Assistance**

Some help with school supplies, transportation, clothing, shoes and/or medical or dental services may also be available by contacting the District Health Services office at 417-523-1630.

**Substance Abuse Prevention Education**

All students will receive comprehensive substance abuse prevention education in grades K-12 through the District Health curriculum. Substance abuse prevention is more than factual and pharmaceutical information. The development of wholesome, positive self-concepts and decision-making skills is an important deterrent to drug or alcohol experimentation. Students and/or parents may obtain a list of local resources for substance abuse counseling and treatment from the school counselor or nurse.

**Supplies**

To guide parents, each school has compiled a suggested list of items that a student might need for various levels of school work. These lists are available from the nearest school.

**Telephones**

Telephones are placed in the school for school business. A student may use the telephone in the office with teacher or Principal approval. Students may be expected to give the reason for their call and should make the call as brief as possible.

Important telephone messages are placed in teachers' mailboxes or delivered to the class, but students and teachers are interrupted only in cases of emergency.

Parents can help prevent excessive telephone use for forgotten items by having their child gather textbooks, musical instruments, lunch money, etc., and place them in a regular place.

**Textbooks/Instructional Materials**

Textbooks and district approved digital resources are furnished free of charge by the Board of Education. In most classes, textbooks and digital resources are provided on the basis of one per student and are assigned to the student at the beginning of the year. The student must return physical textbooks at the end of the year or upon withdrawal from school. If a book is lost or unduly damaged, the student is expected to pay for it.

**Title I Programs**

Title I is a program funded by the federal government to provide special help to those students whose achievement indicates a need and who attend schools that qualify according to federal guidelines. During the regular school year, supplemental programs in the basic skills of reading and/or math are provided at the schools which qualify.

## Transfer Guidelines

Information about transfer guidelines (immediate and transitional) can be found on the district's website at [www.sps.org/transfers](http://www.sps.org/transfers).

1. If a building is over 90% capacity or 105% of projected enrollment, it is closed to all new transfers.

- (Elementary) For grades K through 5:

Capacity Class Size by Title and Non-Title Site and Grade Levels	Title Elementary	Non-Title Elementary
K-2	20	22
3-5	23	25

- (Secondary) For grades 6 through 12, if the building is over 90% capacity or 105% of projected enrollment, it is closed.
  - For middle schools, these figures are divided by 3 to determine the limits for closing one particular grade level.
2. In consultation with the Director of Student Services, current transfers may be revoked when:
    - Class size requires an additional staff member (i.e., teacher aide, additional teacher).
    - Results in a combination class.
    - A transfer's attendance and/or behavior is poor. (Poor attendance will be determined with the Principal's discretion; Grades are not part of the revocation process).
    - District and/or school rules are not met (i.e., punctuality, arrival and pick-up times, and provision of a street address).
  3. Anytime during the first three quarters a student moves out of the current attendance area, an application for transfer must be made and all transfer rules and regulations apply.
  4. Transfer requests will not be accepted during the 4<sup>th</sup> quarter. If a student moves within the District during the last quarter of the school year, they can stay in their current building for the remainder of that year. The subsequent year will require a transfer request and Principal approval.
  5. If a student's transfer is revoked during 4<sup>th</sup> quarter they may stay in their current building for the remainder of the year. The subsequent year will require the student to submit a transfer request and receive Principal approval or return to their building of residence.
  6. A student does NOT have to reapply for a transfer each school year.
    - A student in the highest grade level of their current school must reapply if he/she plans to attend a different middle/high school than his/her home school.
  7. A senior who moves within the District but attended his/her current high school during his/her junior year is given "senior option" and allowed to stay with a transfer application on file.
  8. A sibling of a current transfer student is NOT ensured a transfer. A sibling will be considered for transfer in the same manner as any other transfer request.
  9. Building or class capacity limits may be waived for employees working in that building as long as no additional cost will be incurred and with the understanding that revocation may occur under the conditions listed in Number 2 above.
  10. Springfield Public Schools reserves the right to close a school to new transfers at any time due to extenuating circumstances.
  11. Springfield Public Schools provides the opportunity for eligible employees to request to enroll/transfer their children as a student within SPS, regardless of where the student resides. See Employee Handbook for additional information.



## **Transportation**

The convenience of riding a school bus is extended to students who meet School District mileage guidelines and conduct themselves in a safe and orderly manner while on the school bus. Regular education students will not be assigned to more than one AM/PM bus stop. The assignment of that bus stop is based upon the primary address for the student listed in the District's Student Database. Students are not allowed to ride buses other than the bus they are assigned. If there is a situation which requires that a student ride a different bus than he/she normally rides, the parent/guardian should send a request in writing to the school in advance. Only bus eligible students are allowed to ride the bus.

Authority and control of student groups transported in school buses is vested in the licensed driver. The driver is an appointed member of the school staff and has the same authority and responsibility for the safety and conduct of the students on the bus as is vested in the classroom teacher. It is important that both students and parents understand this basic statement.

The driver is responsible to the school Administration for seeing that the following regulations are enforced. Regulations covering public school transportation have been carefully worked out by the State of Missouri and constitute the basis for safe and efficient transportation for public school students. Safety comes first in pupil transportation. Students who disrupt or otherwise distract the driver will be issued a Report of Bus Conduct filled out by the driver and delivered to the school for action. The level of action taken will be decided by school officials and may include denial of bus transportation for a specific period of time depending on the severity and frequency of the incident. See Policy JFCC.

### **Transportation Rules and Regulations**

1. The driver is in charge of the students and the bus. Students must obey the driver promptly. He/she has a great responsibility and deserves the cooperation of the students and parents.
2. Students must be on time. The bus cannot wait beyond its regular schedule for those who are tardy.
3. Students should never stand in the roadway while waiting for the bus. Loading points will be designated by the school in terms of safety and efficiency.
4. Classroom conduct is to be observed by students while riding the bus. An attitude of cooperation and consideration for other students, the driver and community members observing students on the bus is expected.
5. Moving about while the bus is loading, unloading, or in motion is forbidden.
6. The use of alcohol, drugs or tobacco on the school bus or at the bus stop is forbidden.
7. Large instruments that cannot be held on the lap of a student are not to be transported on the bus due to safety concerns and lack of space.
8. Students are expected to do their part in keeping the bus neat and clean. The consumption of food or beverages on the bus is not allowed. Glass containers and balloons are prohibited.
9. Students must not at any time extend arms, head or objects out of the bus windows. Spitting out the bus windows is prohibited.
10. Safety Regulations demand that students observe directions of the driver when boarding and leaving the bus. When unloading, students need to cross the roadway in front of the bus at the signal of the driver.
11. Any damage to a bus by a student must be paid for by the student or his or her parents.
12. The driver will not discharge riders at places other than the regular bus stop near the home, or at school, unless given proper authorization in advance, in writing, from the parent and the Principal of the school.
13. All school discipline policies apply while students are riding the school bus.
14. **Students who are not eligible to ride the bus are not allowed to ride.**

### **Pay to Ride**

**(Policy EEAA)** The District Pay-to-Ride Program offers transportation for K-12 students of the District not otherwise eligible for transportation by Board policy. Since space and cost must be considered, the availability of parent-paid transportation is not guaranteed.

If you have a letter of approval for free and reduced priced meals from the School Food Service Department, you are eligible for reduced pay to ride fees for each child if your application for the Pay-To-Ride program is approved by the

District's Transportation Department. (A letter of approval must be provided at the time of payment. **Do NOT send an approval letter with the Pay-To-Ride application.**)

If you are interested in participating in the District's Pay-to-Ride program, please visit [www.sps.org](http://www.sps.org) under Transportation and fill out the Pay-to-Ride Application. **(Please note: The fees will not be prorated nor will they be refundable.)**

For more information please contact:

Transportation Department – Springfield Public Schools  
2945 E. Pythian Street  
Springfield, Missouri 65802  
417-523-0500

### **Virtual Course Enrollment (MOCAP)**

Missouri Course Access and Virtual School Program (MOCAP) provides online learning opportunities to students in Missouri. MOCAP's mission is to offer Missouri students equal access to a wide range of high quality courses, and interactive online learning that is neither time nor place dependent.

Local school districts and charter schools may use their own preferred online provider. The Springfield Public School District's preferred provider is Launch. Launch is operated and overseen by Springfield Public Schools. Launch currently offers over 500 courses with full-time and part-time programming available for students in grades K-12. Courses are designed by Missouri teachers and aligned to the state standards. A formal review process is built into all course development to ensure high quality and rigor. Students wishing to take advantage of online learning opportunities will do so through Launch and may enroll at their home building or through the Launch office. To schedule an appointment, or for more information, please contact 417-523-0417.

If a student wishes to pursue an online class offering through other MOCAP options outside of Launch, he/she may apply to do so directly through the vendor. Please contact Dr. Nichole Lemmon, Director of Virtual Learning and Strategic Planning, [nlemmon@spsmail.org](mailto:nlemmon@spsmail.org), to discuss virtual learning options.

Additional information regarding virtual course processes and procedures can be found in the Virtual Course Handbook.

### **Withdrawals from School**

Parents of children who are leaving the school district or are moving to another school attendance area within SPS should notify the school a few days prior to the last day of attendance. Library materials, texts and other school property must be returned before transfer is complete. Failure to follow these procedures may make it difficult for a student to be enrolled and classified properly in another school. He/she will also be required to pay for books or other equipment that is lost or damaged.

## ELEMENTARY SCHOOL INFORMATION

### After School Care/Programs

Various after school care and/or programs are offered at many elementary sites. Contact your child's school to inquire about programs available at his/her building.

### Curriculum

As a part of a well-rounded education, elementary students will receive instruction in the following subjects:

- **English Language Arts:** English Language Arts focuses on reading foundations, reading, writing, and speaking and listening. Through reading workshop, students are exposed to explicit reading lessons through interactive readings aloud, mini-lessons, shared reading, and guided reading. Primary students are also provided phonics, word study, and spelling through explicit lessons during both reading and writing instruction. During writing workshop, writing instruction focuses on handwriting, the writing process, developing written texts, research, and conventions. Opportunities for speaking and listening exist in both reading and writing workshop as students collaborate and communicate with others.
- **Mathematics:** The elementary mathematics program focuses on the domains of Number Sense, Relationships and Algebraic Thinking, Number Sense and Operations in Base 10 and Fractions, Geometry and Measurement, and Data and Statistics. Concrete objects and problem solving tasks are used to develop an understanding of concepts through an inquiry approach. This means that students will develop an understanding of the connections between concepts and apply basic mathematics to real life situations.
- **Science:** Science is an integration of concepts, processes, and attitudes. This integration is developed through a combination of "hands on" experiences, reading, discussions, and demonstrations. Students receive these experiences as individuals, in small groups, and in total class activities.
- **Social Studies:** Social Studies draws ideas from several areas of study including historical documents, government, economics, geography, culture, and social science inquiry. Through project based learning students gain knowledge and skills that require critical thinking, creativity, and communication in order for them to answer challenging questions or solve complex problems.
- **Art:** Students receive complete art education instruction from a certified visual art education teacher on a weekly basis. Instruction focuses on line, shape, form, value, space color and texture. This instruction establishes the base upon which children develop an appreciation of their own work, the work of their peers, and the work of other artists.
- **Health Education:** Growth and Development and Body Systems Lessons - Standards-based instruction regarding growth and development and body systems is provided by the district curriculum department. Instruction is delivered through a collaboration of classroom teachers and school nurses in grades four and five. Parents are given the opportunity to preview materials used in growth and development and body systems lessons. Parents who do not want their children to participate in these lessons must notify the principal or classroom teacher in writing. Additionally, the classroom health education is a sequential curriculum for the elementary grades. The overall goal is for students to learn how their actions affect their health and, thus, begin to take more responsibility in caring for their health. Areas covered are personal/dental health, physical fitness, mental and social health, growth and development, safety/first aid, nutrition, consumer health, substance abuse, diseases and disorders, and community and environmental health.
- **Library:** Curriculum is organized into five domains: Introduction to the Library and its Resources; Literature Appreciation; Research and Presentation Skills; Technology, Digital, and Media Literacy, and Innovation and Design. These domains support grade level standards and content-area instruction. The library media center is a place where students learn and use a variety of resources for independent choice and academic reading. Library Media Specialists (LMS) support student learning for locating information by teaching them to inquire, think critically, and gain knowledge. The LMS, along with the students, will utilize information to draw conclusions, make informed decisions, apply knowledge to new situations, and create new knowledge. Students will share knowledge and participate ethically and productively as members of society. In addition,

students will pursue personal and aesthetic growth through experiencing a variety of genres and award-winning literature.

- **Music, Vocal:** Students receive complete music education instruction from a certified music education teacher on a weekly basis. Students will explore the basics of music through singing, performing on classroom instruments, composing, and listening to various examples of music from around the world. This instruction provides a foundation for music literacy and establishes the base upon which children develop an appreciation of music.
- **Music, Instrumental:** Starting in the fifth grade, students have the option of receiving instruction on string instruments. Instrumental classes meet twice a week.
- **Physical Education:** Students receive comprehensive physical education instruction from a certified physical education teacher on a weekly basis. The classes provide students with growth in the development of motor skills and physical fitness. The units involved include spatial awareness, locomotor and non-locomotor skills, manipulatives, gymnastics, rhythms, small-sided games, and physical fitness activities. Soft-soled shoes and proper attire are required for physical education class. Students are expected to participate in physical education activities unless properly excused. A note from a parent or guardian will excuse a student for one day. To be excused for more than one day, a note from a doctor is required.

### **Elementary Enrollment Procedures**

Pre-registration is held in each of the elementary schools during the spring. Dates for the pre-registration are announced through the schools and local news media. At this time, parents registering kindergarten students for the next year are also encouraged to make an appointment for a free developmental screening for their child by calling 417-523-1333..

Enrollment for elementary students who did not attend a Springfield school the preceding year is held in each of the elementary schools during August. At enrollment, parents will receive a student supply list, school lunch information forms, enrollment forms, bus regulations if applicable, letters of information, insurance forms, and other valuable information. It is the parent/guardian responsibility to provide the school with emergency contact numbers for the protection of the students. Parents/guardians need to provide proof of local residency within the district boundary when registering students.

Enrollment may take place at any time at the school the child will attend although most elementary schools are closed during the months of June and July. Parents need not worry about the child's records if moving into the District. Those records will be requested by the enrolling school.

**Entrance Age:** A student must be five years old before August 1 to enter kindergarten and six years old before August 1 to enter first grade. This is a state requirement.

### **Homework**

Homework is necessary for the development of initiative, responsibility, and self-reliance. The amount of time spent on homework and the type of homework will vary with individuals depending upon their needs and interest. Not all students will have homework every day.

Assigned homework at the elementary level should not require more than 30 minutes on any given day for students in grades K-3. No more than 60 minutes should be spent on homework for students in grades four and five. Types of homework include:

- practice or drill to improve skills;
- work assigned to increase student understanding;
- experiments, doing research;
- creative model building, trips to museums, writing, reading, visiting libraries, and completion of assignments.

## **Parties**

The Board of Education believes that social events are an integral part of school life and should be planned to help students develop and mature socially. Events shall be planned according to the maturity and age level of the students who participate. All social events shall be sponsored and chaperoned by the school staff. Principals are responsible for determining when special events, parties or special activities are to occur.

[https://drive.google.com/file/d/1NxaorqEAmEA\\_LU-Rf2HDbHxI8Fy4mWMf/view](https://drive.google.com/file/d/1NxaorqEAmEA_LU-Rf2HDbHxI8Fy4mWMf/view)

## **Playgrounds**

Students are expected to go out for playtime. Appropriate clothing and shoes should be worn for outside activities. Activity on the playground is organized and supervised to provide safe recreation. The school will provide all playground equipment needed. Equipment allowed on the playground will be determined by the building Principal. Parents are allowed on the playground during school hours only with building Principal permission.

## **Progress Reports**

Progress Reports are sent to elementary parents at the end of each quarter with the teacher's evaluation of a child's academic and behavioral progress. At the end of each of the first three quarters, parents are to sign the grade report envelopes and return them to school.

Some typical criteria used in determining a student's progress are:

- performance on tests given in the class
- quality of written work
- participation in and contribution to class activities
- promptness and thoroughness in completing assignments
- general grasp of knowledge and skills in a particular subject

Both teachers and parents should emphasize a variety of factors. These include such things as regular attendance, cooperation in the group, attentiveness, accuracy in following directions, habits of effective study, initiative of work with self-direction in worthwhile activities, and other traits listed on the student's report card.

Careful attention should be given by parents to a student's report card. However, no marking system can replace the need for parent-teacher conferences.

Special reports may be made to parents in writing, by telephone, by teachers in person when a student's work falls below an acceptable standard, or when a student fails to conform to school regulations. The full cooperation of parents is necessary for the correction of such problems.

Parents can access their student's information including current grades and attendance through the District's electronic portal. Access to the portal can be obtained through a registration process. Contact your student's school for more information. See *eSchoolPLUS Home Access Center* in the **Student Information** section of this handbook.

## **School Walking Route Maps**

The City of Springfield's Traffic Engineering Division has developed and is responsible for maintaining the "Recommended School Walking Route Maps" for all schools with students in the 5<sup>th</sup> grade and below, in the R-12 School District, and make them available for viewing and copying on the City of Springfield Traffic Engineering web page (<https://www.springfieldmo.gov/2114/School-Walking-Route-Maps>); they may also be accessed at [www.sps.org](http://www.sps.org).

## MIDDLE SCHOOL INFORMATION

### Activities/Athletics

Springfield middle schools are members of the Missouri State High School Activities Association (MSHSAA) and are guided by the regulations adopted by this association. The rules of eligibility, limitations on participation, length and number of trips, and other elements of participation are determined in large measure by regulations of the MSHSAA and elements of the Citizenship Standards for Participation in Student Activities Program.

### Adult Athletic Events Ticket

An adult athletic events ticket may be purchased for \$15.00 and entitles the adult admission to all athletic events in which his/her student's school is involved.

### Athletic Participation Fee

Athletic Participation cards sell for \$50.00. The participation fee card is required before a student can participate on an athletic team or be a member of a cheerleading squad. The fee is paid by each student. The fee not only allows participation but also will admit the holder in free to any contest conducted by the R-12 School District (excluding MSHSAA-sponsored events) during the year. The athletic participation card fee will be waived upon the request of a parent for those middle school students eligible for free and reduced lunch.

Total refund of the fee will be made prior to the first athletic event of the school year if participation requirements have not been met. Total refund will also be made when a participation fee card is purchased after the fall or winter sports season in order to try out for a winter or spring sport and no athletic contests are conducted during the try-out period.

### Eligibility Guidelines

A student in grades 6-8 who failed more than one scheduled subject, or failed to make standard progress in special education, shall be ineligible the following grading period regardless of promotion to the higher grade. Additionally, a student shall be currently enrolled in and regularly attending the normal course for that grade or must have enrolled in a full course at his or her level in any public school special education program for students with a disability approved by the Missouri State Department of Education which, though ungraded, enrolls pupils of equivalent chronological age. A beginning 6th grade student shall have been promoted from the 5th grade to the 6th grade for first quarter eligibility. A student must be making satisfactory progress as determined by local school policies.

### Required Physical Exam

All athletes are required to have a completed physical exam on file before any tryouts begin. Cheerleaders are required to have a completed physical exam on file after tryouts have concluded but before practices begin. Physicals are good for a two year period from the date of issue. All athletes, including cheerleaders, are required to have proof of insurance on file before any tryout or practice.

### Student Athletic Events Ticket

An athletic ticket may be purchased and used as an admission ticket to all middle school athletic contests in which the student's home school is participating.

### Exclusion from Activities Guidelines

Participation in the activities program in middle school is a privilege. When a student's conduct in school results in a suspension of any type, the student will be excluded from the activities program for a specific length of time.

The following points will provide the details of this policy:

- Middle school students will not participate in a game or activity on the day of an ISS or OSS suspension. Students may participate in practice that occurs on the day of an ISS suspension. ISS or OSS suspensions are considered completed at the end of the day on the last day of the suspension or within guidance of the *Citizenship Standards for Participation in Student Activities Program*.
- During the duration of the activity exclusion, students may not attend field trips, dances, banquets, or any other non-graded event. The exception is participation in a music concert, a play, or any event that requires participation

of the student for a class grade unless the student received OSS. An alternative assignment will be prepared for these students.

- During the duration of the activity suspension, students may not be a participant in an interscholastic athletic event sponsored by the school. It is the **decision of the coach** as to whether or not the student may sit on the team bench in street clothes during the game while the student remains under suspension. The bench alternative is the only way a student may attend a home game during the activity exclusion; he/she may not sit in the bleachers as a spectator.
- Clubs, teams, student council, pep club, cheerleaders, National Junior Society and other activity groups may also have additional consequences written into their operational guidelines.

It is the hope that the foregoing procedures will rarely be employed, but will be applied in a consistent manner when necessary.

### **Dances/Socials**

Dances/social activities are planned by approved groups within the school to provide an opportunity for positive social interaction between students. Dances are open only to currently enrolled students at the school. Students must be in attendance at school on the day of the dance/social in order to be eligible to participate. Students who have received a suspension are ineligible to attend dances/socials during the duration of the suspension.

### **Grading System**

Academic achievement is recognized in Springfield's secondary schools by the letters A, A-, B+, B, B-, C+, C, C-, D+, D, D-, and F. Continuous records of achievement are kept in the teacher's class book to be used at the end of each quarter in preparing the students' report cards.

The mark shown on a student's report card indicates the teacher's evaluation of work in a particular subject. Some typical criteria used in determining a student's mark for the quarter are (1) performance on tests given in the class, (2) quality of written work, (3) participation in and contribution to class activities, (4) promptness and thoroughness in completing assignments, and (5) a general grasp of knowledge and skills in a particular subject.

Each student is encouraged to attain the highest level of achievement of which he/she is capable. Competition against his/her own record for self-improvement and the satisfaction that comes from performing each task well is an important goal for each student. Scholarship marks are given in comparison with the standards of achievement expected of a student in the grade level of his/her classification and in comparison with others in the class.

### **Honor Roll**

The Principal of each school compiles honor rolls at the end of each semester.

A student who earns a Grade Point Average (GPA) of 3.25 will be placed on the *Honor Roll*.

A student who earns a Grade Point Average (GPA) of 3.7 will be placed on the *Principal's Honor Roll*.

### **Lockers and Locks**

Lockers are the property of the school and are provided to students as a convenience for the storage of school supplies. Each student is assigned a corridor locker and, if enrolled for physical education, a gymnasium storage basket. Each of these requires a combination lock which the student will be required to return in good condition at the end of the year. Students should use the locker assigned to them, and only that locker. Students should not share their lock combination with any other student. If a student believes their lock combination is known to another student they should request a new lock from their teacher.

Proper use of the locker needs to be planned on a time schedule. A student should not expect to go to his/her locker after each class, but should generally plan to carry books and materials for at least a half-day session. More specific information is provided in each school.

**Physical Education**

Students are expected to change into appropriate/decent attire for physical education classes and participate. Athletic shoes (tennis shoes) are required as a matter of safety. All students are expected to keep their gymnasium clothing,

including tennis shoes, neat and clean. Parent requests for not participating in PE activity due to illness and/or injury should be sent directly to the school nurse.

**Promotion of Students**

Students are promoted in the middle school/intermediate school on the basis of general achievement in all subjects carried during the year. A major consideration in deciding whether a student should be promoted will be to serve the best interests of the student. In addition, successful completion of the Explore Program may be required for promotion.



## **HIGH SCHOOL INFORMATION**

### **Activities/Athletics**

Springfield high schools are members of the Missouri State High School Activities Association (MSHSAA) and are guided by the regulations adopted by this association. The rules of eligibility, limitations on participation, length and number of trips, and other elements of participation are determined in large measure by regulations of the MSHSAA and elements of the Citizenship Standards for Participation in Student Activities Program.

### **Activities Participation Fee**

In order to participate, fees may be required for some student activities. These fees may be required for clubs, music activities and class labs. A total refund of fees will be made if the student chooses not to participate prior to the first event.

### **Athletic Participation Fee**

The \$50 participation fee is required before a student can participate on an athletic team and an icon will be printed on the student's school ID. The fee not only allows participation but also will admit the holder to any contest conducted by the R-12 School District (excluding tournaments and MSHSAA sponsored events) during the year. The athletic participation card fee will be waived upon the request of a parent for those high school students eligible for free and reduced lunch.

Total refund of the fee will be made prior to the first athletic event of the school year if participation requirements have not been met. Total refund will also be made when a participation fee card is purchased after the fall or winter sports season in order to try out for a winter or spring sport and no athletic contests are conducted during the try-out period. A student in grades 9-12 who failed more than one scheduled subject, or failed to make standard progress in special education, shall be ineligible the following grading period regardless of promotion to the higher grade. Additionally, a student shall be currently enrolled in and regularly attending the normal course for that grade or must have enrolled in a full course at his or her level in any public school special education program for students with a disability approved by the Missouri State Department of Education which, though ungraded, enrolls pupils of equivalent chronological age. A beginning 9th grade student shall have been promoted from the 8th grade to the 9th grade for first semester eligibility. A student must be making satisfactory progress as determined by local school policies.

### **Attendance Requirement for Dances**

In order to attend a SPS dance, excluding Prom, students must meet the following requirements:

- 90% overall attendance (school-sponsored activities do not count as absences) by a determined date prior to the dance set by the high school site administration.
- Must be in attendance the entire school day the day of the dance.
- Must not be serving ISS or OSS on the day of the dance.
- Major discipline infractions may result in non-admittance to the school dance

### **Required Physical Exam**

All athletes are required to have a completed physical exam on file before any tryouts begin. Cheerleaders are required to have a completed physical exam on file after tryouts have concluded but before practices begin. Physicals are good for a two year period from the date of issue. All athletes, including cheerleaders, are required to have proof of insurance on file before any tryout or practice.

### **Changing Schedules**

Careful completion of a Selection of Studies and preparation of the Proposed Program of Study should eliminate the necessity for most schedule changes. A student's request for schedule change may be approved after a conference between the parent and counselor. A parent should give written approval for a schedule change. In an 8 Block school, when a student drops a class after the fourth week of the quarter, or in a 4 Block school, when a student drops a class after the second week of the quarter, an "F" will be recorded on the

transcript unless extenuating circumstances reviewed by the Principal indicate that an exception should be allowed. This "F" will be included in computing the GPA.

### College Visits

Juniors and seniors wishing to apply for a college visit will be allowed up to two days his/her junior year, and up to two days his/her senior year for college visit(s). This absence (if verified) will not count against student attendance. The visit and subsequent absence(s) must be pre-approved by an administrator.

### Course Syllabus

At the beginning of the school year (or at the beginning of each course), teachers will provide a written syllabus for each course taught. Students and parents should be familiar with information provided for each course for which the student is enrolled.

### Finals Exemption Requirements

Students are eligible for finals exemption by meeting the following criteria:

- 90% overall attendance (school-sponsored activities do not count as absences) per semester or per quarter for 4 block sites
- Received no ISS or OSS for the semester or quarter for 4 block sites
- Passing the class with an 80% or greater prior to the final exam
- Exempt students may take the final to improve their grade in a class; in this case, the final grade cannot hurt the student's overall grade
- Required to attend class during the final exam block and complete optional enrichment tasks provided
- Dual credit, AP, IB, and virtual classes are not eligible for final exemptions.

### Grading System

Each student is encouraged to attain the highest level of achievement of which he/she is capable. Competition against his/her own record for self-improvement and the satisfaction that comes from performing each task well is an important goal for each student. For information about the grading system, including weighted courses, please refer to the High School Education Planning Guide accessible on the district's website at [www.sps.org/](http://www.sps.org/).

### Graduation Requirements (Board Policy IKF)

Graduation requirements for The School District of Springfield R-12 shall be a minimum of 25 units of credit completed during grades nine and above.

[https://docs.google.com/document/d/1y66kwXAtWhedUyXd7xNo1zNeDIba13D8\\_4OSYgB612U](https://docs.google.com/document/d/1y66kwXAtWhedUyXd7xNo1zNeDIba13D8_4OSYgB612U)

Courses	Graduation Requirements	College Preparatory Requirements
<b>Communication Arts*</b>	4 units	4 units
<b>Social Studies**</b>	3 units	3 units
<b>Math</b>	3 units	3 units
<b>Science</b>	3 units	3 units
<b>Physical Education</b>	1 ½ units	½ unit
<b>Health</b>	½ unit	½ unit
<b>Practical Arts</b>	1 ½ unit	1 unit
<b>Fine Arts</b>	1 unit	1 unit
<b>Electives</b>	7 ½ units	6 units
<b>Advanced Electives</b>	0 units	3 units
<b>Total****</b>	<b>25 units</b>	<b>25 units</b>

**\* The Communication Arts requirement** shall include a minimum of three units of English. A fourth Communication Arts unit may be taken in the areas of Journalism, Speech, or Drama.

**\*\* Students are required to complete three units of Social Studies** as follows:

U.S. History in the Twentieth Century (Gr. 9) 1 unit

World History (Gr. 10, 11, 12) 1 unit

Liberty and Law (Gr. 11, 12) ½ unit

Any additional Social Studies ½ unit

**Students are required to complete 1 ½ units of Practical Arts as follows:**

Personal Finance (Gr. 10, 11, 12) ½ unit

Any additional Practical Art 1 unit

**A maximum of two units of credit may be counted toward graduation from approved correspondence courses.**

### **Graduation Attendance Requirements**

Students will be required to attend eight semesters in grades nine and above. Permission may be granted to leave after seven semesters under the following conditions:

- The student shall have completed a total of twenty-five units of credit in seven semesters of attendance, and have arranged to attend college, university, vocational school, or on-the-job training for the eighth semester. Approval must be given in advance by the Principal.
- Requests for early leaving should be submitted to the Principal by the end of the sixth semester. A statement shall be given to each student showing the credits earned and the conditions for which a diploma will be granted in the future.
- Students successfully completing a planned educational experience shall be eligible to receive their high school diploma with their graduating class.

As related to the above requirement, a semester is defined as being enrolled in a minimum of 3 units of credit. Modifications of these graduation requirements may be identified in a student's Individual Program of Study or Individual Education Program.

### **Graduation Exercises (Policy IKFB)**

When a student completes all graduation requirements, it is an achievement of not only the student but also the community. The Board will recognize the student in a public graduation ceremony to celebrate this accomplishment. The Superintendent or designee will plan an appropriate ceremony on the date approved by the Board, with input from the students graduating. If appropriate, the District may hold more than one (1) ceremony or recognition celebration.

Unless otherwise stated in this policy, students may only participate in graduation ceremonies if they have successfully completed all graduation in accordance with Board policy. Students seeking to apply credits earned through other accredited schools, as defined in policy IKF, toward graduation requirements must provide the District with verified documentation of the completion of these courses ten (10) working days prior to the graduation ceremony in order to participate in the ceremony. Any student who has otherwise met all requirements for graduation will be granted a diploma, regardless of whether he or she participates in graduation exercises.

Participation in the graduation ceremony is a privilege and not a right. A student must be in good standing in order to participate in graduation exercises.

Elementary, intermediate, and middle schools may hold promotion exercises, but formal graduation programs will be reserved for students successfully exiting the District's educational program.

Students eligible for services under the Individuals with Disabilities Education Act (IDEA) who will have completed four (4) years of high school at the end of a school year may participate in the graduation ceremony and all related activities of the student's graduating class if:

1. The student's Individualized Education Program (IEP) prescribes special education, transition planning, transition services or related services beyond the student's four (4) years of high school.

2. The student's IEP team determines the student is making progress toward the completion of the IEP and that participation in the graduation ceremony is appropriate.

The student and the student's parent/guardian will be provided written notice of this policy at the annual IEP meeting prior to or during the student's fourth year of high school.

### **Honor Roll**

The Principal of each school compiles honor rolls at the end of each semester on the basis of grades earned during the preceding semester. A high school student must be enrolled in a full load of courses for the semester as listed below.

- 3.0 units of credit per semester (Glendale, Hillcrest & Kickapoo)
- 2.5 units of credit per semester (Central & Parkview)

A student who earns a weighted Grade Point Average (GPA) of 3.0 will be placed on the *Honor Roll*.

A student who earns a weighted Grade Point Average (GPA) of 3.75 and has no grade below "C-" will be placed on the *Principal's Honor Roll*.

### **ID Badges**

All staff and high school students are required to properly display a visible ID badge during school hours. Students are financially responsible for replacing the ID badge. An ID badge may be affixed using an approved lanyard, clip or magnet.

### **Lockers and Locks**

Lockers are the property of the school and are provided, if available, to students as a convenience for the storage of school supplies. Some sites do not have enough lockers for each student, therefore lockers are provided upon student request. Lockers require a combination lock which the student will be required to return in good condition at the end of the year. If enrolled in physical education, a student will be assigned a gymnasium storage basket or locker.

### **Planning A High School Program of Studies**

The following information is found in the High School Education Planning Guide:

<a href="#">Establishing Goals</a>	Course Audit Option
Guidance Help	Ozarks Technical College Career Training
Required Courses	Selection of Studies and Program Planning
Honors Program/Criteria for Honors Classes	High School Courses Taught in Middle School
Grade Point Average	Recognition of Excellence
Enrichment Programs	Division I NCAA Athletic Scholarship Requirements
	Dual Enrollment

### **Repeated Courses: Assignment of Grades**

Students may repeat courses for which grades of "F" or "D" were earned. The grade earned in the second attempt will be included in the student's Grade Point Average (GPA). The transcript will continue to show that the student took the course twice and will show the grade earned on both occasions. However, only the grade earned on the second attempt will be included in the GPA.

Students who wish to repeat a course in which a grade of "C" or above was earned may do so. The transcript will reflect the grade earned each time. However, only the grade earned on the first attempt will be included in the GPA and credit will not be recorded for the course the second time it is taken.

### **Use of Motor Vehicles**

All motor vehicles used by students and staff in going to and from school and parked on school property shall be registered with the school Principal or designee. Parking for high school students on school-designated parking lots shall be on a fee basis. City citations may be issued to all automobiles violating parking regulations.

## DISCIPLINE

As noted in the Board of Education policy [JG: Student Discipline](#), it is essential that the district maintain a safe school environment and a climate that allows teachers to communicate effectively with all students in the class and allows all students in the class to learn. Discipline will be equitably applied and viewed as a learning opportunity with the ultimate goal of improving behavior, safety and the school climate. The district seeks to minimize the unnecessary exclusion of students from classrooms and school and encourages the superintendent and district staff to exclude students only when necessary to maintain a safe and appropriate learning environment.

### **Safe Schools Act**

In compliance with RSMo, 160.261, school administrators are required to report, as soon as possible, to the appropriate law enforcement agency any of the following crimes, or any act which if committed by an adult would be one of the following crimes:

#### **Safe Schools Act Reportable Offenses:**

***For more specific information, please refer to Board Policy JG***

1. First degree murder under section 565.020;
2. Second degree murder under section 565.021;
3. Kidnapping under section 565.110 as it existed prior to January 1, 2017, or kidnapping in the first degree under section 565.110;
4. First degree assault under section 565.050;
5. Rape in the first degree under section 566.030;
6. Sodomy in the first degree under section 566.060;
7. Burglary in the first degree under section 569.160;
8. Burglary in the second degree under section 569.170;
9. Robbery in the first degree under section 569.020 as existed prior to January 1, 2017, or robbery in the first degree under section 523.023;
10. Distribution of drugs under section 195.211 as it existed prior to January 1, 2017, or manufacture of a controlled substance under section 579.055;
11. Distribution of drugs to a minor under section 195.212 as it existed prior to January 1, 2017, or delivery of a controlled substance under section 579.020;
12. Arson in the first degree under section 569.040;
13. Voluntary manslaughter under section 565.023;
14. Involuntary manslaughter under section 565.024 as it existed prior to January 1, 2017, involuntary manslaughter in the first degree under section 565.024, or involuntary manslaughter in the second degree under section 565.027;
15. Second degree assault under section 565.060 as it existed prior to January 1, 2017, or second degree assault under section 565.052;
16. Rape in the second degree under section 566.031;
17. Felonious restraint under section 565.120 as it existed prior to January 1, 2017, or kidnapping in the second degree under section 565.120;
18. Property damage in the first degree under section 569.100;
19. The possession of a weapon under chapter 571;
20. Child molestation in the first degree pursuant to section 566.067 as it existed prior to January 1, 2017, or child molestation in the first, second, or third degree pursuant to section 566.067, 566.068, or 566.069;
21. Sodomy in the second degree pursuant to section 566.061;
22. Sexual misconduct involving a child pursuant to section 566.083;
23. Sexual abuse in the first degree pursuant to section 566.100;
24. Harassment under section 565.090 as it existed prior to January 1, 2017, or harassment in the first degree under section 565.090; or
25. Stalking under section 565.225 as it existed prior to January 1, 2017, or stalking in the first degree under section 565.225

## **Student Referral Procedures Administrative Guidelines**

### **I. Purpose of the Procedures**

The purpose of these Administrative Guidelines is to establish and define the referral procedures for student discipline offenses to be used in the school district. These Administrative Guidelines shall be subordinate to the written policies of the District's Board of Education.

### **II. Scope of the Student Referral Procedures**

The referral procedures set forth in these Administrative Guidelines, unless otherwise specified by Board of Education policy or these guidelines, are applicable to conduct which is defined in the Board of Education student discipline policies and the Administrative Guidelines on student discipline.

### **III. Non-Discrimination in Application of Referral Procedures**

The school district is committed to maintaining and administering its student discipline policies without regard to the race, color, religion, ancestry, national origin, sex, sexual orientation, gender identity, age or disability of any student, parent or other person affected by the policies. Inquiries regarding compliance with applicable civil rights statutes may be directed to the Director of Human Resources at Springfield Public Schools, 1359 E. St. Louis Street, Springfield, MO 65802 or by telephone at 417-523-4647.

All inquiries regarding compliance with applicable statutes regarding Section 504 of the Rehabilitation Act, the Individuals with Disabilities Education Act, and the Americans with Disabilities Act may be directed to the Special Services Director at Springfield Public Schools, 1610 E. Sunshine St., Springfield, MO 65804 or by telephone at 417-523-7500.

### **IV. Referral of Students with Disabilities**

Students with disabilities shall be treated in a manner consistent with their Individual Educational Program (IEP) and federal and state law.

### **V. Procedure Prior to Referral to the Building Administration**

Teachers, teaching teams and/or staff members should work with a student who has committed a minor disciplinary infraction prior to officially referring the student to the building Administration. A student who commits a minor disciplinary infraction should be given the opportunity to self-correct his or her conduct. It is expected that prior to referral to the office for minor disciplinary infractions, the teacher and/or staff member shall conference with the student and shall have made contact with the student's parent/guardian concerning the conduct by conference, telephone or letter.

### **VI. Student Referral Procedures**

The school district's student referral procedures are as follows:

1. Students may be referred for discipline for any violation of the school district's student discipline policies, as defined in the Administrative Guidelines on student discipline.
2. Minor disciplinary infractions should be handled as described above.
3. Staff members who refer a student to the office should prepare the approved student discipline referral form. Referral forms may be completed by the appropriate administrator for review and signature of the referring staff member if circumstances prevent the staff member from completing the form at the time of referral. Student referrals will not be accepted, except in emergencies, if they are not on the approved form.
4. Sufficient and accurate details will be supplied by the referring staff member on the form in order that the Administrator who handles the discipline will be able to quickly determine the nature and extent of the alleged infraction.
5. No student should be referred for discipline for conduct which does not violate, or appear to violate the student discipline policies of the school district.
6. No student will be referred for discipline because of the student's race, color, religion, ancestry, national origin, sex, sexual orientation, gender identity, age or disability.

## **VII. District Review of Student Referrals**

The school district will review student discipline referrals to ensure referrals follow the guidelines.

## **Student Discipline Administrative Guidelines**

### **I. Purpose of Guidelines**

The purpose of these Administrative Guidelines is to establish and define the student discipline policies of the school district. These guidelines shall be subordinate to the written policies of the District's Board of Education.

### **II. Scope of Guidelines**

The student discipline guidelines set forth in this Administrative Guideline, unless otherwise specified by Board of Education policy or these guidelines, are applicable to conduct which occurs:

- on or in school district property, including school buses or other vehicles provided by the District which are used to transport students to and from school, activities or programs;
- while the student is traveling to or from school, a school-sponsored or school-directed activity;
- while the student is present at or engaged in a school-sponsored or school-directed activity; or,
- in the immediate vicinity of school district property immediately before or after, or during the school day.

### **Suspension Appeals**

- Out-of-school suspensions of more than ten (10) school days may be appealed. In-school suspensions and out-of-school suspensions of ten (10) school days or less are not appealable.
- Board of Education Policy JGD, *Student Suspension and Expulsion*, may be used if the student believes the disciplinary action is based on the student's race, national origin, ancestry, religion, age, gender, sexual orientation, gender identity, or disabling condition.

### **III. Non-Discrimination in Application of Policies**

The School District of Springfield R-12 prohibits discrimination on the basis of race, color, national origin, sex, age, sexual orientation, gender identity, disability or military status in its programs and activities as required by: Title IX of the Education Amendments of 1972, Title VI and Title VII of the Civil Rights Act of 1964, the Age Discrimination in Employment Act of 1975, 42 U.S.C. Section 6101, the Americans with Disabilities Act, the Individuals with Disabilities Education Act, Section 504 of the Rehabilitation Act of 1973, the Uniformed Services Employment and Reemployment Rights Act and Missouri law. Inquiries regarding compliance with applicable civil rights statutes related to ethnicity, gender, sexual orientation, gender identity, or age discrimination may be directed to the Chief Human Resources at Springfield Public Schools, 1359 E. St. Louis Street, Springfield, MO 65802 or by telephone at 417-523-4647.

All inquiries regarding compliance with applicable statutes regarding Section 504 of the Rehabilitation Act, the Individuals with Disabilities Education Act, and the Americans with Disabilities Act may be directed to the:

Chief Human Resources Officer

1359 East Saint Louis Street, Springfield, MO 65802

Phone: 417-523-4647 / Fax: 417-523-0197

### **IV. Application to Students with Disabilities**

Administration of student discipline standards for students with disabilities shall be consistent with federal and state statutes.

### **V. Use of Disciplinary Reports**

Reports prepared by the District's School Police Office, administrators and employees of the school district concerning violations of the student discipline standards, including but not limited to personally identifiable information about the student committing the violation, witness statements and other information relevant to the violation, may be provided to the appropriate law enforcement agencies pursuant to the requirements of the Safe Schools Act, Missouri Statutes and the Order of the Circuit Court of Greene County, Missouri.

## **VI. School Police Services Guidelines**

Under some circumstances, School Police Services may complete a written report for any disciplinary event.

## **VII. Review Meeting**

An asterisk within the scope and sequence of a discipline consequence indicates that the potential exists for a long term suspension, or a suspension of greater than 10 days. In accordance with state statute 160.261, 167.161, and 167.171 RSMo and SPS Policy JGD, Section VI, student suspensions of greater than 10 days require a hearing before the Superintendent or designee. These hearings, called Review Meetings, are conducted by the Director of Student Services. At these meetings, the student and the parents/guardians will be advised of the charges against the student and their procedural rights.

# **DISCIPLINE GUIDELINES**

Discipline is used to teach and guide students how to recognize and manage emotions, demonstrate care and concern for others, develop positive relationships, make good decisions, and behave ethically, respectfully and responsibly.

When assigning discipline to students, administrators should assign the lowest level of intervention first. When choosing a higher-level response within the range of possible responses, an administrator should consider:

- the student's age, health, disability, decision-making ability and prior discipline history
- the student's willingness to repair the harm
- the seriousness of the act
- the harm caused or the potential to cause, including any injuries caused
- the extent of actual disruption to the learning environment
- whether the act was intentional
- prior trauma, language proficiency, and knowledge of school behaviors

In each case, SPS administrators and staff will ensure consequences applied will minimize the amount of instructional time lost. Consequences for offenses will be administered in a professional manner based on frequency and flagrancy of the student's behavior. A student should expect more severe consequences for repeated or serious violations of school policies.

Types of consequences from least severe to most severe:

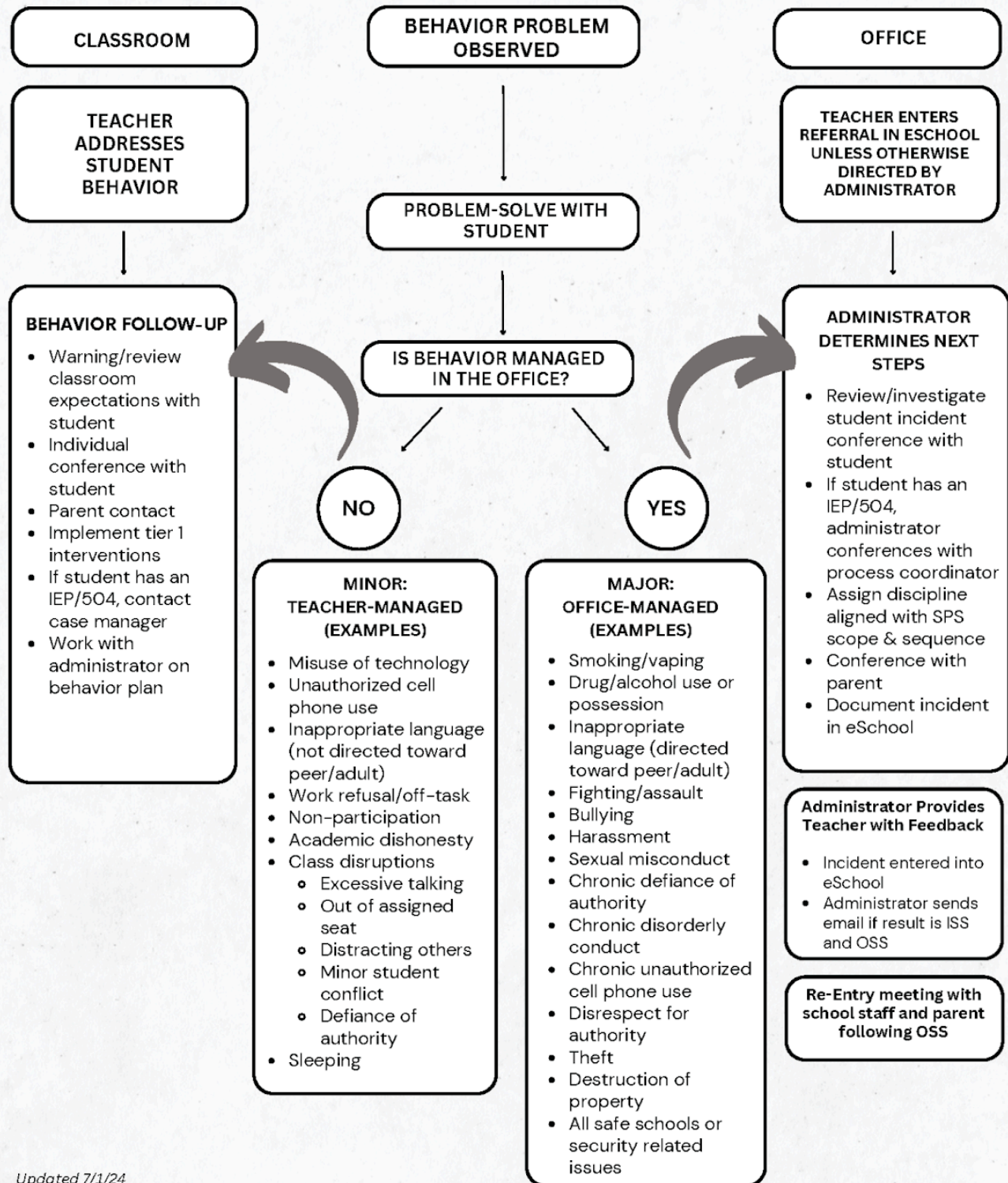
- Teacher/administrator/parent conference
- Detention before, during, and after school
- Restrictions from activities and privileges
- In-school suspension or out-of-school suspension



# SPRINGFIELD PUBLIC SCHOOLS

## BEHAVIOR MANAGEMENT PROCESS

*As outlined in its strategic plan, Springfield Public Schools is committed to establishing and maintaining high academic and behavior expectations for each student. Student behavior management is a team effort between guardians, educators, and administrators. This visual is intended to provide the reader with a general overview of the process. It is not intended to be all-encompassing and individual schools may have varying processes to meet the unique needs of their school communities.*



Updated 7/1/24

**Alcohol/Drugs**

See Board of Education Policy JFCH.

**Possession or Use**

School Police Report Required.

Offense	Elementary School	Middle School	High School
1 <sup>st</sup>	Conference, Detention, up to 10 days OSS with assessment upon discretion	Conference, Detention, up to 10 days OSS with possible reduction	Conference, Detention, up to 10 days OSS with possible reduction
2 <sup>nd</sup> and subsequent offenses	1 day ISS up to 10 days OSS*	3 days of ISS up to 10 days OSS*	3 days of OSS up to 10 days OSS*

**Sale or Distribution**

School Police Report Required. This offense (must have been a physical transaction of distribution and not an intent to distribute) may qualify as a Safe Schools Violation.

Offense	Elementary School	Middle School	High School
1 <sup>st</sup>	10 days OSS + Review Meeting (Up to 180 days OSS)	10 days OSS + Review Meeting (Min. 30 up to 180 days OSS)	10 days OSS + Review Meeting (Min. 30 up to 180 days OSS)

**Arson**

Arson is defined as the intentional and knowing use of fire on School District property which may or may not cause damage to School District property or property of others; or the attempt to commit arson. Arson violations are divided into two categories:

**Class I Arson Offense**

**School Police Report at Officer Discretion.** Characterized by arson which causes no appreciable property damage, injury to persons or interruptions to the educational or extra-curricular process; or, an attempt to commit arson.

Offense	Elementary School	Middle School	High School
1 <sup>st</sup>	Conference, Detention, up to 3 days OSS	Conference, Detention, up to 3 days OSS	Conference, Detention, up to 3 days OSS
2 <sup>nd</sup>	Detention up to 3 days OSS	Detention up to 3 days OSS	Detention up to 3 days OSS
3 <sup>rd</sup> and subsequent offenses	Detention up to 5 days OSS	2 Days ISS up to 5 days OSS	1 day OSS up to 10 days OSS*

**Class II Arson Offense**

**School Police Report Required.** Characterized by arson which causes property damage, injury to persons or interruption to the educational or extra-curricular process. This offense may qualify as a Safe Schools Violation.

Offense	Elementary School	Middle School	High School
1 <sup>st</sup>	1 day OSS up to 10 days OSS*	1 day OSS up to 10 days OSS*	1 day OSS up to 10 days OSS*
2 <sup>nd</sup> and subsequent offenses	10 days OSS + Review Meeting (Up to 180 days OSS)	10 days OSS + Review Meeting (Up to 180 days OSS)	10 days OSS + Review Meeting (Up to 180 days OSS)

**Assaultive Behavior**

Assaultive behavior is generally defined as intentionally or recklessly causing physical injury to another. Assaultive behavior is divided into:

**Class I Assaultive Behavior or Class I Fighting Offense**

**School Police Report at Officer Discretion. Contact Director of Student Services at principal discretion.** Defined as assaultive behavior that does not meet the definition of a Class II Assaultive Behavior Offense toward a person who does not indicate a desire to fight and thereafter does not engage in such conduct, or defined as physical conflict involving two or more participants which does not cause significant physical injury (i.e., stitches, broken bones, unconsciousness or where an ambulance must be called to care for any person) to any person engaged in the physical conflict.

Offense	Elementary School	Middle School	High School
1 <sup>st</sup>	Conference, Detention up to 1 day OSS	Conference, Detention, up to 3 days OSS	Conference, Detention, up to 5 days OSS
2 <sup>nd</sup>	Detention up to 2 days OSS	Detention up to 5 days OSS	Detention to 7 days OSS
3 <sup>rd</sup> and subsequent offenses	3 days ISS up to 3 days OSS	3 days ISS up to 10 days OSS*	3 days ISS up to 10 days OSS*

**Class II Assaultive Behavior or Class II Fighting Offense**

**School Police Report Required. Contact to Director of Student Services Required.** Defined as assaultive behavior toward a person who does not indicate a desire to fight and thereafter does not engage in such conduct, which causes significant physical injury (e.g., stitches, broken bones, unconsciousness or where an ambulance must be called to care for any person), or defined as physical conflict involving two or more participants which causes significant physical injury, as defined above, to any person engaged in the physical conflict. This offense may qualify as a Safe Schools Violation.

Offense	Elementary School	Middle School	High School
1st and subsequent offenses	3 days ISS up to 10 days OSS*	3 days ISS up to 10 days OSS*	3 days ISS up to 10 days OSS*

**Threatening to Fight**

**School Police Report at Officer Discretion.** Defined as expression of the intent to engage in assaultive behavior toward another, including intimidating behavior or language characterized as threatening.

Offense	Elementary School	Middle School	High School
1 <sup>st</sup>	Conference, Detention, up to 1 day ISS	Conference, Detention, up to 2 days ISS	Conference, Detention, up to 2 days ISS
2 <sup>nd</sup>	Detention up to 2 days ISS	Detention up to 3 days ISS	Detention up to 3 days ISS
3 <sup>rd</sup> and subsequent offenses	Detention up to 3 days ISS	Detention up to 2 days OSS	Detention up to 3 days OSS

**Assaultive Behavior Toward School Personnel or Non-Students**

**School Police Notification Required. School Police Report at Officer Discretion.** Defined as assaultive behavior toward a School District employee or non-students, including but not limited to student teachers, visitors, voters, volunteers, law enforcement personnel; or threatening to engage in assaultive behavior toward non-students; or verbally or physically intimidating conduct toward non-students on District property or at school sponsored events. This offense may qualify as a Safe Schools Violation. For threatening behavior or threatening posturing see Threats of Violence Towards a Person.

Offense	Elementary School	Middle School	High School
1st and subsequent offenses	Conference, Detention, up to 10 days OSS*	Conference, Detention, up to 10 days OSS*	Conference, Detention, up to 10 days OSS*

**Threats of Violence Toward a Person or Property**

**School Police Notification Required. Contact Director of Student Services Required. School Police Report at Officer Discretion.** Defined as the verbal, written or physical communication of a threat or defined as the verbal, written or physical communication of a threat to inflict serious property damage upon the school district by use of a Class III Weapon; or, a Class II Explosive Device; or by use of fire. This offense may qualify as a Safe Schools Violation. To inflict serious physical injury or death upon any person or property; To bring a Class III Weapon (as defined in Board of Education Policy JFCJ) or Class II Explosive Device onto school district property or the immediate vicinity thereof; or, To possess a Class III Weapon or Class II Explosive Device while traveling to or from school; or,

To bring a Class III Weapon or a Class II Explosive Device onto a vehicle operated by or for the school district for the transportation of students; or, To bring a Class III Weapon or a Class II Explosive Device to a school sponsored or school-directed activity; or, To use a Class III Weapon or a Class II Explosive Device upon any person or property.

Offense	Elementary School	Middle School	High School
1st and subsequent offenses	Conference, Detention, up to 10 days OSS*	Conference, Detention, up to 10 days OSS*	Conference, Detention, up to 10 days OSS*

### **Computer/Electronic Devices, Unauthorized Use**

Unauthorized use of computers is divided into:

#### **Unauthorized Use of a Computer or Tampering with Computer Equipment**

**School Police Report at Officer Discretion.** Defined as: The use of a computer, hand-held device or any computer system to access, without authorization, a database, computer network or computer system owned by the school district or an employee of the school district; or, Use of a school district computer, hand-held device or any computer system to access, without authorization, a database, computer network or computer system owned by the school district or any other person or entity; or, Use of a computer, hand-held device or any computer system on school district property, school bus, or at a school-related event, to download or review data or other materials from a database, computer network or computer system, with or without authorization, when access or downloading such data is prohibited, is pornographic or advocates violence or civil disobedience; or, Use of a school district computer, personal computer, hand-held device or any computer system to do, or attempt to do, any of the following:

- a. Bypass a District web filter (CIPA filter)
- b. Install any executable file on a District server or computer
- c. Access unauthorized files from District servers
- d. Access a proxy server (anonymizer)
- e. Obtain and/or store images that, in the opinion of the District, are pornographic (whether or not they are blocked by web filters)
- f. Download and/or store music and/or movie files on District servers without authorization
- g. Any other tools that could be used to bypass District computers or other security systems, in the opinion of the District.
- h. Engage in other activity prohibited by the District or the administration of the school.

Offense	Elementary School	Middle School	High School
1st and subsequent offenses	Conference, Detention, up to 3 days ISS	Conference, Detention, up to 3 days ISS	Conference, Detention, up to 3 days ISS

#### **Class I Inappropriate Use of Electronic Devices**

**School Police Report at Officer Discretion.** Defined as the act of using an electronic device to record, publish or display audio or visual images of events involving faculty, staff or other students in or around school premises, without approval of school personnel, and the event that is recorded, published or displayed is not "confidential." The prohibited conduct includes such things as audio or visual recording of faculty or staff in the classroom; acts of violence; disruptions to the school environment; or, other acts prohibited by the District's Disciplinary Guidelines. The term "confidential" includes, but is not limited to an audio, video or photographic recording of faculty, staff, students or other persons which is recorded without the advance knowledge of all persons who are recorded and/or which is recorded: (1) in a location where any person who is recorded has a reasonable expectation of privacy, such as a restroom, locker room or other location in or around school premises; and/or, (2) during or in conjunction with an extra-curricular or school activity; and/or (3) on a District school bus or other vehicle which transports District students; and/or, (4) which contains an image of a portion of a person's body over which a reasonable person would have an expectation of privacy, even if the person consented to the recording.

Offense	Elementary School	Middle School	High School
1 <sup>st</sup>	Conference, Detention, up to 2 days ISS	Conference, Detention, up to 3 days OSS	Conference, Detention, up to 3 days OSS
2 <sup>nd</sup>	Detention up to 3 days ISS	Detention up to 3 days OSS	Detention up to 3 days OSS
3 <sup>rd</sup> and subsequent offenses	1 day ISS up to 3 days OSS	3 days ISS up to 10 days OSS	3 days ISS up to 10 days OSS

### **Class II Inappropriate Use of Electronic Devices**

**School Police Report at Officer Discretion.** Meets the definition for Class I Inappropriate Use of Electronic Devices, and the event that is recorded, published or displayed is "confidential." The term "confidential" includes, but is not limited to an audio, video or photographic recording of faculty, staff, students or other persons which is recorded without the advance knowledge of all persons who are recorded and/or which is recorded: (1) in a location where any person who is recorded has a reasonable expectation of privacy, such as a restroom, locker room or other location in or around school premises; and/or, (2) during or in conjunction with an extra-curricular or school activity; and/or (3) on a District school bus or other vehicle which transports District students; and/or, (4) which contains an image of a portion of a person's body over which a reasonable person would have an expectation of privacy, even if the person consented to the recording.

Offense	Elementary School	Middle School	High School
1st	Conference, Detention, up to 10 days OSS*	Conference, Detention, up to 10 days OSS*	Conference, Detention, up to 10 days OSS*
2 <sup>nd</sup> and subsequent offenses	3 days ISS up to 10 days OSS*	3 days ISS up to 10 days OSS*	3 days ISS up to 10 days OSS*

### **Inappropriate Cell Phone Use**

**School Police Report at Officer Discretion.** The use of an electronic communication device such as a cell phone, or a similar device, is prohibited during the school day. This policy will be violated if the device is turned on or used during the school day, unless authorized by a site-specific procedure. The "use" of a device will occur if the device is in the "on" position and/or if voice, text, photo or video messaging takes place during the school day. The District is not responsible for lost, damaged or stolen devices.

Offense(s)	Elementary School	Middle School	High School
1-2	Conference, Detention, up to 1 day ISS	Conference, Detention, up to 2 days ISS	Conference, Detention, up to 2 days ISS
3-4	Detention up to 2 days ISS	Detention up to 3 days ISS	Detention up to 3 days ISS
5 +	Detention up to 2 days OSS	Detention up to 2 day OSS	Detention up to 2 day OSS

## **Defiance of Authority, Disorderly Conduct or Disrespect for Authority**

### **Defiance of Authority**

**School Police Report Not Required.** Defined as refusal to comply with a reasonable request or direction of school personnel or others in authority where there is no expressed disrespect for authority.

Offense(s)	Elementary School	Middle School	High School
1-2	Conference, Detention up to 1 day ISS	Conference, Detention, up to 2 days ISS	Conference, Detention, up to 2 days ISS
3-4	Detention up to 2 days ISS	Detention up to 3 days ISS	Detention up to 3 days ISS
5+	Detention up to 2 days OSS	Detention up to 2 days OSS	Detention up to 2 days OSS

### **Disorderly Conduct**

**School Police Report Not Required.** Defined as conduct which is riotous, intimidating, rowdy, disruptive or unruly, including but not limited to the use of profanity, offensive/inappropriate language, or physical contact that does not meet the definition of a fight or assault.

Offense(s)	Elementary School	Middle School	High School
1-2	Conference, Detention up to 1 day ISS	Conference, Detention, up to 2 days ISS	Conference, Detention, up to 2 days ISS
3-4	Detention up to 2 days ISS	Detention up to 3 days ISS	Detention up to 3 days ISS
5+	Detention up to 2 days OSS	Detention up to 2 days OSS	Detention up to 2 days OSS

### **Disrespect for Authority**

**School Police Report Not Required.** Defined as overt conduct which exhibits a lack of proper respect for school personnel or others in authority, including incivility, irreverence, impudence, discourteousness or profanity directed toward any person in authority; or such conduct toward any school district employee during or in conjunction with any school-sponsored or school-directed activity either on or off school district property.

Offense	Elementary School	Middle School	High School
1 <sup>st</sup>	Conference, Detention, up to 1 day ISS	Conference, Detention up to 3 days ISS	Conference, Detention up to 1 day OSS
2 <sup>nd</sup>	Conference, Detention, up to 3 days ISS	Conference, Detention up to 1 day OSS	Conference, Detention up to 3 days OSS
3 <sup>rd</sup> and subsequent offenses	Detention up to 3 days OSS	Detention up to 10 days OSS	Detention up to 10 days OSS

**Destruction Of Property/Vandalism**

Destruction of Property/Vandalism is defined as conduct which destroys, mutilates, vandalizes or defaces objects, buildings, materials or property belonging to the school district or school personnel wherever the property is located; or toward property of others which is located on school district property. Destruction of Property/Vandalism is divided into:

**Class I Destruction of Property/Vandalism Offense**

**School Police Report Not Required.** Defined as conduct which involves destruction of property/vandalism where the property destroyed/vandalized has a market value, replacement, clean-up, or repair cost of less than five hundred dollars (\$500.00) in the opinion of the building administrator.

Offense	Elementary School	Middle School	High School
1 <sup>st</sup>	Conference, Detention, up to 1 day ISS	Conference, Detention, up to 1 day ISS	Conference, Detention, up to 3 days ISS
2 <sup>nd</sup> and subsequent offenses	Detention up to 2 days ISS	Detention up to 2 days ISS	Detention up to 1 day OSS

**Class II Destruction of Property/Vandalism Offense**

**School Police Report Required.** Defined as conduct which involves destruction of property/vandalism where the property destroyed/vandalized has a market value, replacement, clean-up, or repair cost of five hundred dollars (\$500.00) or more in the opinion of the building administrator.

Offense	Elementary School	Middle School	High School
1 <sup>st</sup>	Conference, Detention, up to 2 days ISS	Conference, Detention, up to 2 days OSS	Conference, Detention, up to 2 days OSS
2 <sup>nd</sup> and subsequent offenses	Detention up to 1 day OSS	Detention up to 5 days OSS	Detention up to 5 days OSS

**Group Disorderly Conduct/Promotion of a Fight**

**School Police Report at Officer Discretion.** Defined as riotous, intimidating, rowdy, disruptive or unruly conduct which breaks up the order or progress of the educational process, or school-sponsored or directed activities, where two or more persons are involved and/or act in concert including gang-related behavior or attire (see Board of Education Policy JFCE) or defined as non-physical acts that instigate, encourage or perpetuate, or attempt to instigate, encourage or perpetuate violence. This offense may qualify as a Safe Schools Violation.

**Group Disorderly Conduct**

Defined as riotous, intimidating, rowdy, disruptive or unruly conduct which breaks up the order or progress of the educational process, or school-sponsored or directed activities, where two or more persons are involved and/or act in concert including gang-related behavior or attire (see Board of Education Policy JFCE)

Offense	Elementary School	Middle School	High School
1 <sup>st</sup> and subsequent offenses	Conference, Detention, up to 10 days OSS	Conference, Detention, up to 10 days OSS*	Conference, Detention, up to 10 days OSS*



**Promotion of a Fight**

Defined as non-physical acts that instigate, encourage or perpetuate, or attempt to instigate, encourage or perpetuate, any act of Assaultive Behavior.

Offense	Elementary School	Middle School	High School
1 <sup>st</sup>	Conference, Detention, up to 1 day ISS	Conference, Detention, up to 3 days ISS	Conference, Detention, up to 1 day OSS
2 <sup>nd</sup>	Detention up to 1 day ISS	Detention up to 1 day OSS	Detention up to 3 days OSS
3 <sup>rd</sup> and subsequent offenses	Detention up to 1 day OSS	Detention up 3 days OSS	Detention up to 5 days OSS

**Explosive Devices, Use or Possession of**

Possession or Use of Explosive Devices is divided into:

**Class I Explosive Devices Use or Attempted Use**

Defined as the use or attempted use of fireworks which are otherwise legal to possess.

Offense	Elementary School	Middle School	High School
1 <sup>st</sup> and subsequent offenses	Conference, Detention, up to 10 days OSS*	Conference, Detention, up to 10 days OSS*	Conference, Detention, up to 10 days OSS*

**Class II Explosive Devices**

**School Police Report Required.** Defined as the possession or use of explosives, incendiary devices, bombs or similar devices; or, possession of materials to manufacture such devices in whole or in part; or, possession of instructions or directions for the manufacture of such devices or other explosive devices. This offense may qualify as a Safe Schools Violation.

Offense	Elementary School	Middle School	High School
1 <sup>st</sup> and subsequent offenses	1 day ISS up to 10 days OSS*	1 day ISS up to 10 days OSS*	1 day ISS up to 10 days OSS*

**Falsification of Information****Giving False Information/Falsifying School Records/Forgery**

**School Police Report Not Required.** Defined as falsely altering any record maintained by the school district; or filing, processing or using false information with the school district with the intent to deceive school district personnel.

Offense	Elementary School	Middle School	High School
1 <sup>st</sup>	Conference, Detention, up to 1 day ISS	Conference, Detention, up to 1 day ISS	Conference, Detention, up to 1 day ISS
2 <sup>nd</sup> and subsequent offenses	Detention up to 3 days ISS	Detention up to 3 days ISS	Detention up to 3 days ISS

### **Filing a False Emergency Report**

Filing a False Emergency Report is defined as knowingly giving false information to any law enforcement officer, school police officer, fire department officer, school district employee or other person who deals with emergencies that an emergency is occurring or has occurred. Filing a False Emergency Report is divided into two categories:

#### **Class I Filing a False Emergency Report Offense**

**School Police Report Required.** Defined as Filing a False Emergency Report that does not disrupt any educational, extra-curricular activity or the school environment such as a false 911 call.

Offense	Elementary School	Middle School	High School
1 <sup>st</sup> and subsequent offenses	Conference Detention, up to 3 days ISS	Conference, Detention, up to 5 days OSS	Conference, Detention, up to 10 days OSS

#### **Class II Filing a False Emergency Report Offense**

**School Police Report Required.** Defined as Filing a False Emergency Report that disrupts an education or extra-curricular activity or the school environment like pulling a fire alarm or making a bomb threat.

Offense	Elementary School	Middle School	High School
1 <sup>st</sup> and subsequent offenses	Conference, Detention, up to 10 days OSS*	Conference, Detention, up to 10 days OSS*	Conference, Detention, up to 10 days OSS*

### **Harassment**

See Board of Education Policies AC. Harassment is generally defined as conduct which violates [Board of Education Policy ACA](#).

#### **Inappropriate Non-Physical Harassment**

**School Police Report Not Required. Contact Director of Student Services required.** Defined as harassment which is inappropriate verbal, written or non-verbal, non-physical conduct such as, but not limited to, demeaning comments or jokes concerning a person's race, color, religion, sex, national origin, sexual orientation, gender identity, or disability or requests for sexual favors, sexual advances or other non-physical conduct of a sexual nature (sexual harassment). See [Board of Education Policy ACA](#).

Offense	Elementary School	Middle School	High School
1st and subsequent offenses	Conference, Detention up to 10 days OSS*	Conference, Detention up to 10 days OSS*	Conference, Detention up to 10 days OSS*

### **Inappropriate Physical Harassment**

**School Police Report Not Required. Contact Director of Student Services required.** Defined as harassment which is physical in nature or physical tormenting of a person because of the person's race, color, religion, sex, national origin, sexual orientation, gender identity, or disability; or, conduct such as departing or sexual advances or other physical conduct of a sexual nature (sexual harassment) which does not constitute sexual misconduct. See [Board of Education Policy ACA](#).

Offense	Elementary School	Middle School	High School
1st and subsequent offenses	Conference, Detention up 10 days OSS*	Conference, Detention up 10 days OSS*	Conference, Detention up 10 days OSS*

### **Investigation into Bullying/Hazing/Harassment Allegation**

**School Police Report Not Required. Contact Director of Student Services required.** Defined as an initial investigation into a report of bullying/hazing/harassment allegation in which the alleged perpetrator(s) and victim(s) are interviewed.

### **Bullying**

**School Police Report Not Required. Contact Director of Student Services required.** Defined as intimidation, unwanted aggressive behavior, or harassment that is repetitive or is substantially likely to be repeated and causes a reasonable student to fear for his or her physical safety; that substantially interferes with the educational performance, opportunities or benefits of any student without exception; or that substantially disrupts the orderly operation of the school. Bullying includes, but is not limited to: physical actions, including violence, gestures, theft, or property damage; oral, written, or electronic communication, including name-calling, put-downs, extortion, or threats; or threats of reprisal or retaliation for reporting such acts. Bullying may also include cyberbullying or cyber threats.

Cyberbullying is a form of bullying committed by transmission of a communication including, but not limited to, a message, text, sound or image by means of an electronic device including, but not limited to, a telephone, wireless telephone or other wireless communication device, computer or pager. The district has jurisdiction over bullying/cyberbullying that uses the district's technology resources or that originates on district property, at a district activity or on district transportation. Even when bullying/cyberbullying does not involve district property, activities or technology resources, the district will impose consequences and discipline for those who engage in bullying/cyberbullying if there is a sufficient nexus to the educational environment, the behavior materially and substantially disrupts the educational environment, the communication involves a threat as defined by law, or the district is otherwise allowed by law to address the behavior. See [Board of Education Policy JFCF](#).

Offense	Elementary School	Middle School	High School
1st and subsequent offenses	Conference, Detention up 10 days OSS*	Conference, Detention up 10 days OSS*	Conference, Detention up 10 days OSS*

### **Hazing**

**School Police Notification Not Required. Contact Director of Student Services at principal discretion.** Defined as any activity, on or off school grounds, that a reasonable person believes would negatively impact the mental or physical health or safety of a student or put the student in a ridiculous, humiliating, stressful or disconcerting position for the purposes of initiation, affiliation, admission, membership or maintenance of membership in any group, class, organization, club or athletic team including, but not limited to, a grade level, student organization or district-sponsored activity. Hazing may include those actions that subject a student to extreme mental stress including, but not limited to, sleep deprivation, physical confinement, forced conduct that could result in extreme embarrassment or criminal activity, or other stress-inducing activities. Hazing may also include, but is not limited to: acts of physical brutality; whipping; beating; branding; exposing to the elements; forcing inhalation or consumption of any food, liquor, drug, or tobacco product, or other substance; or any other forced physical activity that could adversely affect the physical health or safety of an individual. Hazing can occur even when all students involved are willing participants. Hazing does not occur when a student is required to audition or try out for an organization when the criteria are reasonable, approved by the District and legitimately related to the purpose of the organization. See [Board of Education Policy JFCF](#).

Offense	Elementary School	Middle School	High School
1 <sup>st</sup>	Conference, Detention, up to 3 days ISS	Conference, Detention, up to 3 days ISS	Conference, Detention, up to 3 days ISS
2 <sup>nd</sup>	3 days ISS up to 3 days OSS	3 days ISS up to 5 days OSS	3 days ISS up to 5 days OSS
3 <sup>rd</sup> and subsequent offenses	3 days ISS up to 10 days OSS	3 days ISS up to 10 days OSS*	3 days ISS up to 10 days OSS*

### **Sexual Misconduct**

Sexual Misconduct is divided into:

#### **Class I Sexual Misconduct**

**School Police Report Required. Hotline to DSS Required. Contact Director of Student Services Required.**

Defined as the exhibitionist, video, digital, or print display of a person's genitals, buttocks or the female breasts. This offense may qualify as a Safe Schools Violation. See [Board of Education Policy ACA](#).

Offense	Elementary School	Middle School	High School
1 <sup>st</sup>	Conference, Detention, up to 1 day OSS	Conference, Detention, up to 3 days OSS	Conference, Detention, up to 3 days OSS
2 <sup>nd</sup>	2 days ISS up to 2 days OSS	3 days ISS up to 5 days OSS	3 days ISS up to 5 days OSS
3 <sup>rd</sup> and subsequent offenses	2 days ISS up to 10 days OSS	3 day ISS up to 10 days OSS	3 days ISS up to 10 days OSS

**Class II Sexual Misconduct**

**School Police Report Required. Hotline to DSS Required. Contact Director of Student Services Required.**

Defined as conduct which is of a sexual nature by or between students which involves the intentional physical contact with a person's clothed or unclothed genitals, buttocks, or the breasts of a female, or masturbation. This offense may qualify as a Safe Schools Violation. See [Board of Education Policy ACA](#).

Offense	Elementary School	Middle School	High School
1 <sup>st</sup>	3 days ISS up to 5 days OSS	3 days ISS up to 5 days OSS	3 days ISS up to 5 days OSS
2 <sup>nd</sup> and subsequent offenses	3 days ISS up to 10 days OSS*	3 days ISS up to 10 days OSS*	3 days ISS up to 10 days OSS*

**Class III Sexual Misconduct**

**School Police Report Required. Hotline to DSS Required. Contact Director of Student Services Required.**

Defined as conduct which is of a sexual nature by or between students such as sexual intercourse or oral sex. This offense may qualify as a Safe Schools Violation. See [Board of Education Policy ACA](#).

Offense	Elementary School	Middle School	High School
1 <sup>st</sup> and subsequent offenses	10 days OSS*	10 days OSS*	10 days OSS*

**Theft**

Theft is defined as taking property of the school district or others. Theft is divided into:

**Class I Theft Offense**

**School Police Report at Officer Discretion.** Defined as conduct which involves a theft of property which has a market value or replacement cost of less than five hundred dollars (\$500.00) in the opinion of the building administration.

Offense	Elementary School	Middle School	High School
1 <sup>st</sup>	Conference, Detention, up to 1 day ISS	Conference, Detention, up to 3 days ISS	Conference, Detention, up to 3 days ISS
2 <sup>nd</sup> and subsequent offenses	Detention up to 2 days ISS	Detention up to 1 day OSS	Detention up to 1 day OSS

**Class II Theft Offense**

**School Police Report Required.** Defined as conduct which involves a theft of property which has a market value or replacement cost of five hundred dollars (\$500.00) or more in the opinion of the building administration.

Offense	Elementary School	Middle School	High School
1 <sup>st</sup>	Conference, Detention, up to 2 days OSS	Conference, Detention, up to 3 days OSS	Conference, Detention, up to 3 days OSS
2 <sup>nd</sup> and subsequent offenses	Detention up to 3 days OSS	Detention up to 10 days OSS	Detention up to 10 days OSS

**Receiving Stolen Property**

**School Police Report Required.** Defined as conduct which involves receiving, retaining or disposing of property of another person, for the purpose of, or having the effect of depriving the person of the property and with the knowledge or belief that the property was stolen.

Offense	Elementary School	Middle School	High School
1 <sup>st</sup>	Conference, Detention, up to 1 day ISS	Conference, Detention, up to 1 day ISS	Conference, Detention, up to 2 days ISS
2 <sup>nd</sup>	Detention up to 2 days ISS	Detention up to 2 days OSS	Detention up to 2 days OSS
3 <sup>rd</sup> and subsequent offenses	Detention up to 3 days ISS	Detention up to 3 days OSS	Detention up to 3 days OSS

**Tobacco**

**School Police Report at Officer Discretion.** The term “tobacco” includes, but is not limited to, the use, possession or distribution of cigarettes, cigars, snuff, chewing tobacco, e-cigarettes, nicotine vaporizers and other similar products. See Board of Education Policy AH.

Offense	Elementary School	Middle School	High School
1st and subsequent offenses	Conference, Detention, up to 2 days ISS	Conference, Detention, up to 3 days ISS with possible reduction	Conference, Detention, up to 3 days ISS with possible reduction

**Truancy**

**School Police Report Not Required.** Truancy is defined as intentionally failing or refusing to attend or removing oneself from attending class or other scheduled school activities where attendance is mandatory including cutting class and leaving campus without permission.

Offense	Elementary School	Middle School	High School
1 <sup>st</sup>	Conference up to Detention	Conference, Detention, up to 1 day ISS	Conference, Detention, up to 1 day ISS
2 <sup>nd</sup>	Conference up to Detention	Detention up to 2 days ISS	Detention up to 2 days ISS
3 <sup>rd</sup> and subsequent offenses	Conference up to Detention	Detention up to 3 days ISS	Detention up to 3 days ISS

**Weapons**

**School Police Report Required.** See Board of Education Policy JFCJ. This offense may qualify as a Safe Schools Violation.

**Possession:**

Offense	Elementary School	Middle School	High School
Class II or III	1 day ISS up to 10 days OSS*	3 days ISS up to 10 days OSS*	3 days ISS up to 10 days OSS*

**Use:**

Offense	Elementary School	Middle School	High School
Class I, II or III	10 days OSS + Review Meeting (Up to 180 days OSS)	10 days OSS + Review Meeting (Up to 180 days OSS)	10 days OSS + Review Meeting (Up to 180 days OSS)

**ID Badge Violations: (High School Only)**

Includes failure to arrive at school with a badge, failure to return temporary badge, failure to properly display badge, and defacing/destruction of an ID badge or lanyard.

Offense	High School
1 <sup>st</sup> and subsequent offenses	Conference up to Detention

**Students Charged with a Crime**

See Board of Education Policy JG.

<b>Offense</b>	<b>Elementary School</b>	<b>Middle School</b>	<b>High School</b>
1 <sup>st</sup> and subsequent offenses	See Board of Education Policy JG for procedure	See Board of Education Policy JG for procedure	See Board of Education Policy JG for procedure

**Unsportsmanlike/Disruptive Behavior at Athletic Contest or School-Related Activity**

Unsportsmanlike/ Disruptive Behavior is divided into three categories. The following discipline guidelines are in addition to other appropriate disciplinary action for assault, disorderly conduct, etc.:

**Inappropriate Language and Disorderly Conduct**

**School Police Report Not Required.**

<b>Offense</b>	<b>Elementary School</b>	<b>Middle School</b>	<b>High School</b>
1 <sup>st</sup>	7 calendar day suspension from participating or attending athletic events or school district-sponsored activities to suspension for remainder of the school year from participating or attending any school district activity	7 calendar day suspension from participating or attending athletic events or school district-sponsored activities to suspension for remainder of the school year from participating or attending any school district activity	7 calendar day suspension from participating or attending athletic events or school district-sponsored activities to suspension for remainder of the school year from participating or attending any school district activity
2 <sup>nd</sup> and subsequent offenses	Suspended for remainder of school year from participating or attending any school district activity	Suspended for remainder of school year from participating or attending any school district activity	Suspended for remainder of school year from participating or attending any school district activity



**Fighting, Assaultive Behavior, Throwing Objects or Possession of Inappropriate Objects at Any Activity**  
**School Police Notification Required. School Police Report at Officer Discretion.**

<b>Offense</b>	<b>Elementary School</b>	<b>Middle School</b>	<b>High School</b>
1 <sup>st</sup>	14 calendar day suspension from participating or attending athletic events or school district-sponsored activities to suspension for remainder of the school year from participating or attending any school district activity	14 calendar day suspension from participating or attending athletic events or school district-sponsored activities to suspension for remainder of the school year from participating or attending any school district activity	14 calendar day suspension from participating or attending athletic events or school district-sponsored activities to suspension for remainder of the school year from participating or attending any school district activity
2 <sup>nd</sup> and subsequent offenses	Suspended for remainder of school year from participating or attending any School District activity	Suspended for remainder of school year from participating or attending any school district activity	Suspended for remainder of school year from participating or attending any school district activity

**Drugs/Alcohol Possession or Use**

**School Police Notification Required. School Police Report at Officer Discretion.**

<b>Offense</b>	<b>Elementary School</b>	<b>Middle School</b>	<b>High School</b>
1 <sup>st</sup>	28 calendar day suspension from participating or attending athletic events or school district-sponsored activities to suspension for remainder of the school year from participating or attending any school district activity	28 calendar day suspension from participating or attending athletic events or school district-sponsored activities to suspension for remainder of the school year from participating or attending any School District activity	28 calendar day suspension from participating or attending athletic events or school district-sponsored activities to suspension for remainder of the school year from participating or attending any school district activity
2 <sup>nd</sup> and subsequent offenses	Suspended for remainder of school year from participating or attending any school district activity	Suspended for remainder of school year from participating or attending any school district activity	Suspended for remainder of school year from participating or attending any school district activity

### **Bus Safety Violations**

**School Police Report Not Required.** Failure to comply with the bus rules and regulations may result in the removal of a student for the remainder of the school year. If an offense committed on the bus results in additional disciplinary consequences at school, students may be removed from the bus for the duration of the disciplinary consequences. Categories of offenses are noted on the [Bus Discipline Referral form](#).

Type of Offense	Consequence
Category A	Conference, Detention up to Community Service at the school site
Category B	Detention up to 3-day removal from the bus
Category C	3-day removal from the bus up to 10-day removal from the bus

### **Tardies**

**School Police Report Not Required.**

Offense	Middle School	High School
1 <sup>st</sup> and subsequent offenses	Conference, Detention, up to 1 day ISS	Conference, Detention, up to 1 day ISS

### **Cheating**

**School Police Report Not Required.** Any academic dishonesty, plagiarism, or cheating.

Offense	Elementary School	Middle School	High School
1 <sup>st</sup> and subsequent offenses	Could include redo assignment, loss of credit, conference, detention, up to 1 day ISS	Could include redo assignment, loss of credit, conference, detention, up to 3 days ISS	Could include redo assignment, loss of credit, conference, detention, up to 3 days ISS

### **Academic Honesty/Misuse of Artificial Intelligence**

Using someone else's work and claiming it as your own, even if it is unintentional, is considered being academically dishonest. Examples of academic dishonesty include, but are not limited to, using Artificial Intelligence programs or apps on assignments, online translators for world language courses and plagiarism. It is important that students cite sources and use quotation marks appropriately to avoid violating the Academic Honesty policy.

Students who are suspected of violating the Academic Honesty policy will receive reduced points on the assignment, and are expected to conference with the teacher and/or guardian before the grade can be modified.

If a student violates the guidelines, they will face the following consequences:

- 1st offense: Following teacher conference, student will be allowed to redo assignment for full credit and a formal warning will be issued.
- 2nd offense: Following teacher conference, student will be allowed to redo assignment for a maximum grade of 50% and a second formal warning will be issued.

- 3rd offense (and subsequent): Following teacher, parent, student, and administrator conference, student will receive a zero for assignment.

### **Out-Of-Assigned Area**

**School Police Report Not Required.**

<b>Offense</b>	<b>Elementary School</b>	<b>Middle School</b>	<b>High School</b>
1 <sup>st</sup> and subsequent offenses	Conference up to Detention	Conference, Detention, up to 1 day ISS	Conference, Detention, up to 1 day ISS

### **Bringing/Using Inappropriate Materials**

**School Police Report Not Required.** Could include the possession of a small knife (without the intent to harm), laser pointer (without the intent to harm), pornography, the possession of fireworks which are legal to possess, or other miscellaneous objects that are disruptive to the learning environment.

<b>Offense</b>	<b>Elementary School</b>	<b>Middle School</b>	<b>High School</b>
1st and subsequent offenses	Conference, Detention, up to 2 days ISS	Conference, Detention, up to 3 days ISS	Conference, Detention, up to 3 days ISS

### **Failure To Serve Detention/ISS**

**School Police Report Not Required.**

<b>Offense</b>	<b>Elementary School</b>	<b>Middle School</b>	<b>High School</b>
1 <sup>st</sup> and subsequent offenses	Conference, Detention, up to 1 day ISS	Conference, Detention, up to 1 day ISS	Conference, Detention, up to 1 day ISS

### **Due Process**

All students are entitled to due process. This means that there are certain procedures that school officials will follow prior to taking appropriate disciplinary actions. This includes notice of the charges and the opportunity for the student to respond.

### **Disciplinary Interventions**

**Buddy Room:** (Primarily Elementary School) A student may be sent to a buddy room to serve as a way for the student to calm him/herself or to reflect on the prior decision that caused the student to get in trouble. The buddy room is normally used before a behavioral referral is written to the Principal. The buddy room is always a classroom with a staff member present for supervision. This provides the student an opportunity to examine his/her action, reflect on how the bad choice impacted self or others, and to self-reflect on what a good choice would be in the future.

**Timeout:** Timeouts are disciplinary options that remove the student from the environment where the problem has occurred to another area of the school, such as the office or another classroom. A timeout may or may not result in a disciplinary referral to the office.

**Detention:** Detentions may be assigned before school, during lunch or after school. If it is necessary to keep a child after school, every effort will be made to notify the parent/guardian and/or childcare provider by telephone or by note. A parent/guardian will be required to provide a way home for students at the designated time or it may be necessary to contact the Police Department if the parent/guardian or childcare provider cannot be contacted.

## **Disciplinary Actions**

**In-School Suspension:** An alternative to out-of-school suspension which allows students to remain in a detention room at school rather than being sent home. In-School Suspension carries with it closure from activities/programs similar to out-of-school suspension.

**Out-of-School Suspension:** In Missouri, a Principal may suspend a student for up to ten (10) school days. A Superintendent may suspend a student for up to one hundred-eighty (180) school days. Procedures for suspending a student are outlined below.

1. Before suspending a student, a Principal or Superintendent must (a) inform the student, either orally or in writing, what misconduct he or she is accused of; (b) if the student denies the accusation, explain, either orally or in writing, the facts that form the basis of the proposed suspension; and (c) give the student an opportunity to present his or her version of the incident.
2. If the Principal or Superintendent concludes that the student has engaged in misconduct punishable by suspension, the procedures described below apply unless the student has a disability. (If the student has a disability, the procedures described in the policy dealing with the discipline of students with disabilities apply.)
3. The Principal or Superintendent should determine whether the student should be suspended or alternative measures would be appropriate.
4. If suspension is imposed, the student's parent/guardian must be promptly notified of the suspension and the reasons for the action.
5. Any suspension by a Principal must be reported immediately and in writing. The Superintendent may revoke the suspension, either in part or in full, at any time.
6. Students, while under suspension, are prohibited from participation in, or attendance at, any school-sponsored activities or programs.
7. If a suspension is for more than ten (10) school days, the following rules also apply:
  - a. The student, his/her parent/guardian will have a Review Meeting with school administration and the Director of Student Services (Superintendent's designee). During this meeting, suspension outcomes will be discussed, including long-term suspension.
  - b. The student, his/her parent/guardian or others having custodial care have a right to appeal the Superintendent's decision to the Board or a committee of the Board appointed by the Board president.
  - c. If the student gives notice that he or she wishes to appeal the suspension to the Board, the suspension shall stay until the Board renders its decision, unless in the Superintendent's judgment, the student's presence poses a continuing danger to persons or property or an ongoing threat of disrupting the academic process, in which case the student may be immediately removed from school and the notice and hearing shall follow as soon as practicable.
  - d. All notices of appeal shall be submitted to the Superintendent in writing.
  - e. The Superintendent, when notified of an appeal, shall promptly transmit to the Board a full written report of the facts relating to the suspension, the action taken by the Superintendent, and the reasons for the action.
  - f. Upon receipt of a notice of appeal, the Board will schedule a hearing and within a reasonable time in advance of the scheduled date, will notify, by hand delivery or by certified mail to the last known address of the appealing party, of the date, time and place of the hearing and of the right to an attorney licensed to practice law in the State of Missouri, to call witnesses, and to present evidence at the hearing.
  - g. Hearings of appealed suspensions will be conducted as described in the policy dealing with student disciplinary hearings.

**Expulsion:** Only the Board may expel a student or suspend a student for more than one hundred-eighty (180) school days. The applicable procedures are outlined below.

1. Before recommending to the Board that a student be expelled, the Superintendent must (a) inform the student, either orally or in writing, what misconduct he or she is accused of; (b) if the student denies the accusation, explain, either orally or in writing, the facts that form the basis of the proposed suspension/expulsion; and (c) give the student an opportunity to present his or her version of the incident.
2. If the Superintendent concludes that the student has engaged in misconduct and should be expelled, the procedures described below apply unless the student has a disability. (In the case of a student with a disability, the procedures described in the policy dealing with the discipline of students with disabilities shall apply.)

- a. The Superintendent will recommend to the Board that the student be expelled. The Superintendent may also immediately suspend the student for up to ten (10) days or for a longer period if the Superintendent believes that the student's presence would pose a continuing danger to persons or property, or an ongoing threat of disrupting the academic process.
  - b. Upon receipt of the Superintendent's recommendation, the Board will follow the procedures described in the policy dealing with student disciplinary hearings.
3. If the student is expelled, he or she may later apply to the Board for readmission. Only the Board can readmit an expelled student.

### **Interrogations, Interviews and Searches (Policy JFG)**

*Board of Education policy states –*

The Board of Education has the responsibility to provide students and staff with a safe and secure learning environment. The Board recognizes that there are circumstances that will justify the search of students and their possessions. This policy is designed to balance each student's right to privacy and the need to maintain an appropriate learning environment.

The student search policy set forth herein is applicable to students and/or their property while on school district property; traveling in a vehicle controlled by the district; present at or engaged in a school-sponsored or school-directed activity; or in the immediate vicinity of school district property or a school bus stop immediately before, after or during the school day or a school-sponsored or school-directed activity.

### **Definitions**

*District Administration* – The superintendent or designee(s), including the principal and assistant principals at each school building.

*School Police Officers* – Commissioned law enforcement officers employed by the district.

*Law Enforcement Officers* – Law enforcement officers who are not employed by the district, including but not limited to, law enforcement officers employed by the Springfield Police Department, the Greene County Sheriff's Office, the Greene County Juvenile Office, the Missouri Highway Patrol and other local, state and federal law enforcement agencies.

*Reasonable Suspicion* – A determination made by a district employee that reasonable grounds exist for suspecting a search will turn up evidence that the student has violated or is violating the law or the rules of the school.

### **Searches by School Personnel**

School lockers, desks, textbooks and other district property are provided for the convenience of students and, as such, are subject to periodic inspection without notice.

Student property may be searched based on reasonable suspicion of a violation of district rules, policy or law. Reasonable suspicion must be based on facts known to the administration, credible information or reasonable inference drawn from such facts or information. Student property that may be searched includes but is not limited to backpacks, book bags, athletic bags, instrument cases and purses. Searches of student property shall be limited in scope based on the original justification of the search. The privacy and dignity of students shall be respected. Searches shall be carried out in the presence of adult witnesses and not in front of other students, unless exigent circumstances exist.

It is a privilege, not a right, to park on school grounds. The school retains the authority to conduct routine patrols of any vehicle parked on school grounds. The interior of a student's automobile on school premises may be searched if the school authority has reasonable suspicion to believe that such a search will produce evidence that the student has violated or is violating either the law or district policy.

The administration will contact law enforcement officials to perform a search if the administration reasonably suspects that a student is concealing controlled substances, drug paraphernalia, weapons, stolen goods or evidence of a crime beneath his or her clothing and the student refuses to surrender such items. Law enforcement officials may be contacted

for assistance in performing a search in any case in which a student refuses to allow a search or in which the search cannot safely be conducted.

School employees and volunteers, other than commissioned law enforcement officers, shall not strip search students, as defined in state law, except in situations where an employee reasonably believes that the student possesses a weapon, explosive or substance that poses an imminent threat of physical harm to the student or others and a commissioned law enforcement officer is not immediately available. If a student is strip searched, as defined in state law, by a school employee or a commissioned law enforcement officer, the district will attempt to notify the student's parents/guardians as soon as possible.

With reasonable suspicion, as allowed by law, students may be “patted down” by a school police officer at the direction of the administration or a school public safety officer may elect to use appropriate devices or methods to screen students for the presence of weapons or prohibited items. If exigent circumstances are present, a school police officer may, on his or her own initiative, pat down a student in order to preserve the safety of the officer and others in the area or preserve evidence of a violation of Board policies or procedures or state or federal law.

During an examination, and if reasonable under the circumstances, school employees may require students to empty pockets or remove jackets, coats, shoes and other articles of exterior clothing that when removed do not expose underwear. Employees may also remove student clothing to investigate the potential abuse or neglect of a student, give medical attention to a student, provide health services to a student or screen a student for medical conditions.

#### **Interview with Law Enforcement Officers**

Law enforcement officials may wish to interview students regarding their knowledge of suspected criminal activity and may wish to interrogate students who are themselves suspected of engaging in criminal activity. Such interviews and interrogations are discouraged during class time, except when law enforcement officials have a warrant or other court order or when an emergency or other exigent circumstances exist. It is the responsibility of the principal or designee to take reasonable steps to prevent disruption of school operations while at the same time cooperating with law enforcement efforts.

When law enforcement officials find it necessary to question students during the school day or during periods of extracurricular activities, the school principal or designee will be present and the interview will be conducted in private. The principal will verify and record the identity of the officer or other authority and request an explanation of the need to question or interview the student at school. The principal ordinarily will make reasonable efforts to notify the student's parents/guardians unless the interviewer raises a valid objection to the notification.

#### **Removal of Students from School by Law Enforcement Officials**

Before a student at school is arrested or taken into custody by a law enforcement official or other legally authorized person, the principal will verify the official's identity. To the best of his or her ability, the principal will verify the official's authority to take custody of the student. The school principal will attempt to notify the student's parents/guardians that the student is being removed from school.

#### **Interview with the Children's Division**

Representatives of the Children's Division (CD) of the Department of Social Services may meet with students on campus. The district liaison will work with CD to arrange such meetings so they are minimally disruptive to the student's schedule. If the student is an alleged victim of abuse or neglect, CD may not meet with the student in any school building or child care facility where the abuse of the student allegedly occurred. The principal will verify and record the identity of any CD representatives who request to meet with or take custody of a student. The principal ordinarily will make reasonable efforts to notify the student's parents/guardians unless the interviewer raises a valid objection to the notification.

#### **Contacts by Guardian Ad Litem and Court-Appointed Special Advocate**

When a court-appointed guardian ad litem or special advocate finds it necessary to interview a student during the school day or during periods of extracurricular activities, the school principal or designee must be notified. The principal will verify and record the identity of the individual through the court order that appoints him or her. The

interview must be conducted in a private setting and with the least disruption to the student's schedule. The principal ordinarily will make reasonable efforts to notify the student's parents/guardians unless the interviewer raises a valid objection to the notification.

### **Notification to Parent/Guardian**

District administration will make a reasonable effort to notify the parent/guardian of any student who is subjected to a search by a law enforcement officer on district property or who is subjected to a search pursuant to the section "Searches by School Personnel" above, after the search has occurred.

### **Prohibition against Discrimination, Harassment and Retaliation**

See [Board of Education Policy ACA](#). A form of discrimination, as defined above, on the basis of sex. Sexual harassment is unwelcome conduct that occurs when a) benefits or decisions are implicitly or explicitly conditioned upon submission to, or punishment is applied for refusing to comply with, unwelcome sexual advances, requests for sexual favors or conduct of a sexual nature; or b) the school or work environment becomes permeated with intimidation, ridicule or insult that is based on sex or is sexual in nature and that is sufficiently severe or pervasive enough to alter the conditions of participation in the district's programs and activities or the conditions of employment. Sexual harassment may occur between members of the same or opposite sex. The district presumes a student cannot consent to behavior of a sexual nature with an adult regardless of the circumstance. Behaviors that could constitute sexual harassment include, but are not limited to:

- 1) Sexual advances and requests or pressure of any kind for sexual favors, activities or contact.
- 2) Conditioning grades, promotions, rewards or privileges on submission to sexual favors, activities or contact.
- 3) Punishing or reprimanding persons who refuse to comply with sexual requests, activities or contact.
- 4) Graffiti, name calling, slurs, jokes, gestures or communications of a sexual nature or based on sex.
- 5) Physical contact or touching of a sexual nature, including touching of intimate parts of the body and sexually motivated or inappropriate patting, pinching or rubbing.
- 6) Comments about an individual's body, sexual activity or sexual attractiveness.
- 7) Physical sexual acts of aggression, assault or violence, including criminal offenses (such as rape, sexual assault or battery, and sexually motivated stalking) against a person's will or when a person is not capable of giving consent due to the person's age, intellectual disability or use of drugs or alcohol.
- 8) Gender-based harassment and acts of verbal, nonverbal, written, graphic or physical conduct based on sex or sex stereotyping, but not involving conduct of a sexual nature.

### **Additional Prohibited Behavior**

Behavior that is not unlawful or does not rise to the level of illegal discrimination, harassment or retaliation might still be unacceptable for the workplace or the educational environment. Demeaning or otherwise harmful actions are prohibited, particularly if directed at personal characteristics.

### **Student Alcohol/Drug Abuse (Policy JFCH)**

*Board of Education policy states –*

The School District of Springfield R-XII is concerned with the health, welfare and safety of its students. Therefore, use, sale, transfer, distribution, possession or being under the influence of unauthorized prescription drugs, alcohol, narcotic substances, unauthorized inhalants, controlled substances, illegal drugs, counterfeit substances and imitation controlled substances is prohibited on any district property, in any district-owned vehicle or in any other district-approved vehicle used to transport students to and from school or district activities. This prohibition also applies to any district-sponsored or district-approved activity, event or function, such as a field trip or athletic event, where students are under the supervision of the school district. The use, sale, transfer or possession of drug-related paraphernalia is also prohibited.

### **Definitions**

The following definitions are provided to help parents/guardians and students better understand and interpret this policy.

*Alcoholic Beverages* – A liquid or combination of liquids containing ethanol that has not been denatured in any quantity. This includes over-the-counter or other medication that contains non-denatured alcohol.

*Anabolic Steroid* – Any one of several compounds derived from testosterone or prepared synthetically to promote general body growth.

*Controlled Substance* – Any substance listed in Section 195.010 and Schedules I through V of Chapter 195, RSMo., and including but not limited to, any drug, substance or immediate precursor in Schedules I through V listed in Sections 195.005 to 195.425, RSMo. Examples of such substances include, but are not limited to, marijuana, hashish, cocaine, crack, amphetamines (speed, uppers, pep pills), methamphetamine (crank, crystal), barbiturates (downers, nembutal, seconal), methaqualone, tranquilizers (valium, librium), hallucinogens (PCP, LSD, mescaline, peyote, psilocybin), heroin, morphine and opium.

*Controlled Substance Analogue* – Any substance listed or defined in Section 195.010, RSMo., including but not limited to, any substance the chemical structure of which is substantially similar to the chemical structure of a controlled substance in Schedule I or II and:

1. That has a stimulant, depressant or hallucinogenic effect on the central nervous system substantially similar to the stimulant, depressant or hallucinogenic effect on the central nervous system of a controlled substance included in Schedule I or II; or
2. That an individual represents or intends to have a stimulant, depressant or hallucinogenic effect on the central nervous system substantially similar to the stimulant, depressant or hallucinogenic effect on the central nervous system of a controlled substance included in Schedule I or II.

Examples of such substances include but are not limited to, designer drugs and analogues of fentanyl (synthetic heroin, china white), meperidine (synthetic heroin, MPTP), amphetamines or methamphetamine (ecstasy, XTC, Adam, MDM) and phencyclidine (PCPy, PCE, TCP).

*Counterfeit Substance* – Any substance listed or defined in Section 195.010, RSMo., and including but not limited to, a controlled substance or the container or labeling of which, that without authorization, bears the trademark, trade name or other identifying mark, imprint, number or device or any likeness thereof, of a manufacturer, distributor or dispenser other than the person who in fact manufactured, distributed or dispensed the substance.

*Drug Paraphernalia* – Any item listed or defined in Section 195.010, RSMo., including but not limited to, all equipment and materials of any kind that are used, intended for use or designed for use in cultivating, compounding, producing, storing, containing, concealing, injecting, ingesting, inhaling or otherwise introducing into the human body a controlled substance or an imitation controlled substance including scales, containers, syringes, pipes, carburetion tubes, roach clips and cocaine vials.

*Imitation Drug* – Any substance listed or defined as an imitation controlled substance in Section 195.010, RSMo., and/or including but not limited to, any substance that is not a controlled substance, which, by dosage unit appearance or by representations made, would lead a reasonable person to believe that the substance is a controlled substance.

*Intoxicating Liquor* – Any substance listed in Section 311.020, RSMo., including but not limited to, any alcohol used for beverage purposes; alcoholic, spiritous, vinous, fermented, malt or other liquors, or combinations of liquors, a part of which is spiritous, vinous or fermented; and all preparations or mixtures for beverage purposes containing in excess of 3.2 percent alcohol by weight.

*Simulated Drugs or Simulated Controlled Substances* – Any substance listed or defined in Section 26-140 of the Ordinances of the City of Springfield, Missouri, including but not limited to, any product that is identified or identifies itself by using a common name or slang term, similar name, similar term or mark, imprint, brand, stamp or impression associated with a controlled substance which is not, in fact, a controlled substance.

*Solvent or Toluol* – Any substance listed in Sections 578.250 through 578.265, RSMo., and including but not limited to, colorless petroleum-based toluene, solvents, other substances containing toluol, airplane glue or any like substance that,



when inhaled, would cause or induce symptoms of intoxication, elation, euphoria, dizziness, irrational behavior, stupefaction or dulling of the senses.

*Substance Purported or Believed to Be* – Any substance that is stated, represented, intended, characterized, understood, believed, thought or perceived to be a controlled substance, solvent or toluol, alcohol, intoxicating liquor, alcoholic beverage or anabolic steroid.

### Consequences

Any student who uses, possesses, has ingested, has under his or her control, sells, manufactures, administers, dispenses, distributes or compounds any of the following shall be subject to an administrative investigation:

1. Alcohol, intoxicating liquor as defined in Chapter 311, RSMo, or alcoholic beverages.
2. Controlled substance, counterfeit substance or imitation drug as defined in Chapter 195, RSMo.
3. Solvent or toluol as defined in Chapter 578, RSMo.
4. Substance purported or believed to be a controlled substance, a solvent or toluol; alcohol, intoxicating liquor or any alcoholic beverage; simulated drugs or controlled substances; controlled substance analogues; or anabolic steroids, as defined in this policy.
5. Simulated drugs or simulated controlled substances as defined in 26-140 of the Ordinances of the City of Springfield.
6. Controlled substance analogue as defined in Chapter 195, RSMo., and any substance which has a chemical makeup similar to any controlled substance, as defined above, and which when ingested or otherwise used causes a condition such as intoxication, euphoria, dizziness, irrational behavior, stupefaction or hallucination.
7. Anabolic steroid or other similar compound which is derived from testosterone or prepared synthetically.
8. Drug paraphernalia as defined in Chapter 195, RSMo.
9. Substance, pill, medication or over-the-counter compound (other than food or beverages) which contains caffeine, phenylpropanolamine or ephedrine (but only when such substance is sold, dispensed or distributed, or received).
10. Prescription medications which are not prescribed to the student.
11. Prescription medications which are prescribed to the student, but only if the student sells, administers, dispenses or distributes the medications to others.

After appropriate administrative investigation, a student charged with any violation of this policy shall then bear the burden to prove he or she is lawfully in possession of the substance and has not violated policy. Any student who has violated this policy shall be disciplined in accordance with the district's student discipline guidelines.

<b>Penalties for Distribution of Alcohol or Drugs</b>
---

**Middle School:**

- A. 1<sup>st</sup> offense distribution of alcohol or drugs: The student will receive a 10-day summary suspension from his/her Principal and a 30-day *minimum* extended summary suspension. The summary suspension may be extended more than 30-days based on factors including, but not limited to the following:
  - Type of drug/alcohol that was distributed.
  - Whether a person was injured due to the distribution of the alcohol/drug.
  - Number of students who were involved in the incident.
  - Whether the student had a previous possession of alcohol/drugs violation during the same school year.
- B. 2<sup>nd</sup> offense distribution of alcohol or drugs. The student will receive a 10-day summary suspension from his/her Principal and a 90-day *minimum* extended summary suspension. Expulsion may be recommended based on factors including, but not limited to the following:
  - Type of drug/alcohol that was distributed.
  - Whether a person was injured due to the distribution of the alcohol/drug.
  - Whether the student received money or something of value in exchange for the drug/alcohol.

**High School:**

- A. 1<sup>st</sup> offense distribution of alcohol or drugs: The student will receive a 10-day summary suspension from his/her Principal and a 30-day *minimum* extended summary suspension. The summary suspension may be extended more than 30-days based on factors including, but not limited to the following::

- Type of drug/alcohol that was distributed.
- Whether a person was injured due to the distribution of the alcohol/.
- Number of students who were involved in the incident.
- Whether the student had a previous possession of alcohol/drug during the same school year. The student may be given the opportunity to attend Solutions, but can also continue his/her education through Launch virtual courses or by use of a Chromebook from home.

B. 2<sup>nd</sup> offense distribution of alcohol or drugs: The student will receive a 10-day summary suspension from his/her Principal and a 90-day *minimum* extended summary suspension. Expulsion may be recommended based on factors including, but not limited to the following:

- Type of drug/alcohol that was distributed.
- Whether a person was injured due to the distribution of the alcohol/drug.
- Whether the student received money or something of value in exchange for the drug/alcohol.

When a student is suspected of having consumed alcohol, and when confronted, denies the accusation, the administrator may offer the student the opportunity to demonstrate innocence by use of a breathalyzer test, if available. A student's refusal to submit to this test shall not constitute evidence of guilt or innocence.

The test will be administered in an area away from public view, with school employees present.

### **Suspension of Students Charged With a Crime (See Policy JG – Student Discipline)**

*Board of Education policy states –*

#### **Students Charged with or Convicted of a Crime, Generally**

In addition to the prohibited conduct specified in the student discipline guidelines, a student may be suspended or expelled from the district after notice to the student's parents/guardians or others having custodial care of the student, or notice to the student if the student is 18 years of age or older, and a hearing upon the matter, upon a finding that the student has been charged, convicted or pleaded guilty in a court of general jurisdiction for the commission of a felony criminal violation of state or federal law. At a hearing required by this provision, the Board shall consider statements that the parties present. The hearing procedure used for violations of the student discipline guidelines shall be used.

#### **Students Charged with or Convicted of Specific Crimes**

Notwithstanding any provision of this policy to the contrary, no student shall be re-admitted or enrolled in a regular program of instruction if:

1. The student has been convicted of; or,
2. An indictment or information has been filed alleging that the student has committed one of the acts enumerated in number 4 below, to which there has been no final judgment; or,
3. A petition has been filed pursuant to section 211.091, RSMo that alleges that the student has committed one of the actions enumerated in number 4 below, to which there has been no final judgment; or,
4. The student has been adjudicated to have committed an act which, if committed by an adult, would be one of the following:
  - A. First-degree murder under § 565.020 RSMo;
  - B. Second-degree murder under § 565.021 RSMo;
  - C. First-degree assault under § 565.050 RSMo;
  - D. Forcible rape under § 566.030 RSMo, as it existed prior to August 28, 2013, or rape in the first degree under § 566.030 RSMo;
  - E. Forcible sodomy under § 566.060 RSM, as it existed prior to August 28, 2013, or Sodomy in the first degree under § 566.060 RSMo;
  - F. Statutory rape under § 566.032 RSMo;
  - G. Statutory sodomy under § 566.062 RSMo;
  - H. Robbery in the first degree under § 569.020, RSMo;
  - I. Distribution of drugs to a minor under § 195.212 RSMo;
  - J. Arson in the first degree under § 569.040, RSMo;
  - K. Kidnapping, when classified as a class A felony under § 565.110 RSMo;

L. Any other criminal statute specified in § 167.171.3 RSMo.

### **Threats of Violence at School Sites**

Students under the age of 17 who make threats of injury that if inflicted, could cause permanent disabling or result in the death of one or more persons or a threat to bring a lethal weapon to school and/or use it, the Greene County Juvenile Office and Springfield Public Schools agree to the following protocol:

1. At the direction of the school Principal the assigned School Police Officer will investigate and report findings to the Principal who will determine whether or not a threat has been made and if appropriate, will work with the officer who notifies the Chief Juvenile Officer or Supervisor of Delinquency Unit at the Greene County Juvenile Office of the circumstances.
2. If the juvenile office determines that the threat is of a serious nature, the student will be transported to the Greene County Juvenile Office.
3. The Principal will notify the appropriate Executive Director for protocol approval.
4. With the request from the Greene County Juvenile Office, the School Police Officer or the law enforcement agency having jurisdiction will transport the juvenile to the Greene County Juvenile Office. The School Police Officer will ensure that the parents of the juvenile have been notified and requested to appear at the juvenile office.
5. The School Police Officer shall complete an interim report for the juvenile office to use in assessing the nature and circumstances of the threat. A detailed report will be completed and forwarded to the juvenile office using current procedures. Copies of both reports shall be forwarded to the Principal and appropriate Executive Director.
6. The juvenile officer assigned to the referral will conduct a juvenile interview and investigate the concern.

### **Tobacco and Tobacco Derivatives Use by Students (Refer to Policy AH)**

Smoking and the use of tobacco in any form, as well as possession or use of a smoking device or smoking paraphernalia by students is prohibited when it occurs on school district property, on any school-owned vehicle used to transport students to and from school or school activities; or in the vicinity of a school or school district property; or off school district property at any school-sponsored or school-approved activity, event or function, such as a field trip or athletic event, where students are under the jurisdiction of the school district.

The term “tobacco in any form” includes but is not limited to the use of cigarettes, cigars, snuff, chewing tobacco, e-cigarettes, nicotine vaporizers and other similar products. The term “smoking device or smoking paraphernalia” includes but is not limited to any device which allows a person to smoke or use tobacco, nicotine or non-nicotine based substances, including but not limited to smoking pipes and all smoking/vaporizing paraphernalia.

Since students are not to use tobacco on or in the vicinity of school property, there is no need for a student to possess tobacco. Evidence of possession of tobacco will constitute a violation.

Professional personnel should carry on intensive programs of education designed to fully inform students about the hazards of using tobacco. Such programs shall be planned and conducted in cooperation with various health officials and appropriate public agencies.

Violation of this shall be considered basis for suspension.

### **Weapons (Policy JFCJ)**

*Board of Education policy states –*

The Board recognizes the importance of preserving a safe educational environment for students, employees and patrons of the district. In order to maintain the safety of the educational community, the district will strictly enforce the necessary disciplinary consequences resulting from the use or possession of weapons by students.

The possession or use of a weapon by any student is prohibited, on or in the vicinity of school property, while on a school bus or other school transportation, in student vehicles operated or parked on or adjacent to school property, or at any time the student is attending or participating in a school sponsored activity on or away from school property. The use of a weapon by a student while off school property may also be prohibited, as defined below.

## Definitions

The following definitions are applicable to this policy.

*Weapon* – One or more of the following:

1. A firearm as defined in 18 U.S.C. § 921.
2. A blackjack, concealable firearm, firearm, firearm silencer, explosive weapon, gas gun, knife, knuckles, machine gun, projectile weapon, rifle, shotgun, spring gun or switchblade knife, as these terms are defined in § 571.010, RSMo.
3. A dangerous weapon as defined in 18 U.S.C. § 930(g) (2).
4. All knives and any other instrument or device used or designed to be used to threaten or assault, whether for attack, defense, to inflict bodily harm or to intimidate other persons.
5. Any object designed to look like or imitate a device as described in 1-4.
6. Articles designed for other purposes but by inappropriate use could easily be used to inflict bodily harm and/or intimidate others may be classified as weapons when so used. Examples are belts, combs, pencils, files, compasses, scissors, etc.
7. Any instrument or device commonly used for attack, defense, to inflict bodily harm and/or to intimidate other persons.

The term "weapon" shall not mean weapons brought onto district property with permission of the superintendent or the principal and which do not otherwise violate this policy, such as firearms used during a Conservation Commission hunter safety course or antique or display firearms used solely for educational purposes.

*Class I Weapon* – Articles designed for other purposes but by inappropriate use could easily be used to inflict bodily harm and/or intimidate others, when such items are so used. Examples of these items are belts, combs, pencils, files, compasses, scissors, chains, cafeteria trays, etc.

*Class II Weapon* – One or more of the following:

1. Any knife, butterfly knife, dagger, dirk, stiletto or bladed hand instrument that is readily capable of inflicting serious physical injury or death by cutting or stabbing a person.
2. Any knuckles, including any instrument that consists of finger rings or guards made of a hard substance that is designed or adapted for the purpose of inflicting serious physical injury or death by striking a person with a fist enclosed in the knuckles.
3. Any blackjack, including any instrument that is designed or adapted for the purpose of stunning or inflicting physical injury by striking a person.
4. Any switchblade knife, of whatever length, that opens automatically with a button or other device or opens by force of gravity or application of centrifugal force.
5. Any throwing stars or other similar instruments or devices.

*Class III Weapon* – One or more of the following:

1. Any firearm or other weapon that is designed or adapted to expel a projectile by the action of an explosive, including but not limited to firearms, concealable firearms, machine guns, rifles, shotguns and spring guns.
2. Any explosive weapon such as an explosive, incendiary or poison gas bomb or similar device designed or adapted for the purpose of inflicting death, serious physical injury or substantial property damage or a device designed or adapted for delivering or shooting such a weapon.
3. Any gas gun, such as a gas ejection device, weapon, cartridge, container or contrivance other than a gas bomb, that is designed or adapted for the purpose of ejecting any poison gas that will cause death or serious physical injury, but not any device that ejects a repellant or temporary incapacitating substance.
4. Any projectile weapon, such as any bow, crossbow, pellet gun, paint gun, slingshot or other weapon that is not a firearm, but which is capable of expelling a projectile that could inflict serious physical injury or death by striking or piercing a person.
5. Any item or device purported to be any of the weapons defined in 1-4 above.

## **Penalties**

Violation of this policy shall result in the following penalties.

### ***Possession of a Weapon***

If the student is in possession of a Class II weapon upon or in the vicinity of school premises, while on a school bus or in other school transportation, the weapon is in the student's vehicle which is operated or parked on or adjacent to school property, or at any time the student is attending or participating in a school-sponsored activity on or away from school property:

1. The principal shall suspend the student for ten school days with a recommendation that the superintendent extend the student's summary suspension and/or recommend to the Board that the student be expelled from the district.
2. The superintendent shall extend the student's summary suspension for up to 180 school days if the superintendent finds no mitigating circumstances.

If the student is in possession of a Class III weapon upon or in the vicinity of school premises, while on a school bus or in other school transportation, the weapon is in the student's vehicle which is operated or parked on or adjacent to school property, or at any time the student is attending or participating in a school-sponsored activity on or away from school property:

1. The principal shall suspend the student for ten school days with a recommendation that the superintendent extend the student's summary suspension and/or recommend to the Board that the student be expelled from the district.
2. The superintendent shall extend the student's summary suspension for up to 180 school days and shall recommend to the board that the student be expelled from school if the superintendent finds no mitigating circumstances.

### ***Use of a Weapon***

If the student displays, flourishes or uses a Class I weapon on or in the vicinity of school property, while on a school bus or in other school transportation, at any time the student is attending or participating in a school-sponsored activity on or away from school property:

1. The principal shall suspend the student for ten school days and, depending upon the circumstances of the conduct, may recommend that the superintendent extend the student's summary suspension and/or recommend to the Board that the student be expelled from the district.
2. The superintendent shall extend the student's summary suspension for up to 180 school days depending upon the circumstances of the conduct.

If the student displays, flourishes or uses a Class II weapon on or in the vicinity of school property, while on a school bus or in other school transportation, at any time the student is attending or participating in a school-sponsored activity on or away from school property:

1. The principal shall suspend the student for ten school days with a recommendation that the superintendent extend the student's summary suspension and/or recommend to the Board that the student be expelled from the district.
2. The superintendent shall extend the student's summary suspension for up to 180 school days and shall recommend to the Board that the student be expelled from school.

If the student displays, flourishes or uses a Class II weapon away from school property, which results in a summons being issued to the student, charges being filed in court against the student, or conduct which can otherwise be verified to the satisfaction of the principal:

1. The principal shall suspend the student for ten school days.
2. During that period of time, the superintendent or designee shall determine whether the student or the student's presence in school constitutes a continued threat to the good order and discipline of the school.
3. If the superintendent or designee determines that the student or the student's presence in school constitutes a continued threat to the good order and discipline of the school, the student shall be suspended for up to 180 days with a recommendation to the Board that the student be expelled from school.

If the student displays, flourishes or uses a Class III weapon on or in the vicinity of school property, while on a school bus or in other school transportation, at any time the student is attending or participating in a school-sponsored activity on or away from school property:

1. The principal shall suspend the student for ten school days with a recommendation that the superintendent extend the student's summary suspension and/or recommend to the Board that the student be expelled from the district.
2. The superintendent shall extend the student's summary suspension for up to 180 school days and shall recommend to the Board that the student be expelled from school.

If the student displays, flourishes or uses a Class III weapon away from school property, which results in a summons being issued to the student, charges being filed in court against the student, or conduct which can otherwise be verified to the satisfaction of the principal:

1. The principal shall suspend the student for ten school days.
2. During that period of time, the superintendent or designee shall determine whether the student or the student's presence in school constitutes a continued threat to the good order and discipline of the school.
3. If the superintendent or designee determines that the student or the student's presence in school constitutes a continued threat to the good order and discipline of the school, the student shall be suspended for up to 180 days with a recommendation to the Board that the student be expelled from school.

If the student assists, aids or abets a student or non-student in any act described in the Use of a Weapon subsection of this policy, which results in a summons being issued to the student, charges being filed in court against the student, or conduct which can otherwise be verified to the satisfaction of the principal:

1. The principal shall suspend the student for ten school days.
2. During that period of time, the superintendent or designee shall determine whether the student or the student's presence in school constitutes a continued threat to the good order and discipline of the school.
3. If the superintendent or designee determines that the student or the student's presence in school constitutes a continued threat to the good order and discipline of the school, the student shall be suspended for up to 180 days with a recommendation to the Board that the student be expelled from school.

## BOARD OF EDUCATION POLICIES

### Policies Referenced In Handbook

Policy	Name of Policy
<a href="#">ACA</a>	Sexual Harassment Under Title IX
<a href="#">AC</a>	Prohibition of Against Illegal Discrimination, Harassment, and Retaliation
<a href="#">EEA</a>	Student Transportation Services
<a href="#">JFCA</a>	Student Dress Code
<a href="#">JFCC</a>	Student Conduct on School Transportation
<a href="#">JFCE</a>	Secret Organizations
<a href="#">JFCF</a>	Bullying
<a href="#">JFCG</a>	Hazing
<a href="#">AH</a>	Use of Tobacco Products and Imitation Tobacco Products
<a href="#">JFCH</a>	Student Alcohol/Drug Abuse
<a href="#">JFCJ</a>	Student Use or Possession of Weapons
<a href="#">JFG</a>	Interrogations, Interviews and Searches
<a href="#">JGD</a>	Student Suspension and Expulsion
<a href="#">JG</a>	Suspension of Students Charged with a Crime – Student Discipline
<a href="#">JGF</a>	Discipline Reporting and Records
<a href="#">JHCB</a>	Immunization of Students
<a href="#">JHCD</a>	Administration of Medications To Students
<a href="#">JHCF</a>	Student Allergy Prevention and Response
<a href="#">JO-1</a>	Student Records
<a href="#">IGBC</a>	Programs for Title I Students
<a href="#">IKF</a>	Graduation Requirements
<a href="#">IKFB</a>	Graduation Exercises

### Policies of Interest

Policy	Name of Policy
<a href="#">IGDBA</a>	Distribution of Non-Curricular Student Publications
<a href="#">IL</a>	Assessment Program
<a href="#">JECA-2</a>	Admission of Students
<a href="#">JED</a>	Student Absences and Excuses
<a href="#">JG</a>	Student Discipline





## DIRECTORY INFORMATION AND NEWS MEDIA OPT-OUT

The *Family Educational Rights and Privacy Act* (FERPA) requires the district to obtain written consent prior to the disclosure of personally identifiable information from a student's education record. SPS may disclose appropriately designated directory information without written consent, unless a parent, guardian or eligible student (defined as a student of 18 years of age or older or legally emancipated) advises SPS to the contrary in writing. The primary purpose of directory information is to allow SPS to include information from a student's education records in certain school publications such as yearbooks, graduation programs, sports activity sheets, drama playbills, etc. Directory information is generally not considered harmful or an invasion of privacy if released.

SPS has designated the following information as directory information: student's name; date and place of birth; parents' names; grade level; enrollment status (e.g., full-time or part-time); student identification number; user identification or other unique personal identifier used by the student for the purposes of accessing or communicating in electronic systems as long as that information alone cannot be used to access protected educational records; participation in district-sponsored or district-recognized activities and sports; weight and height of members of athletic teams; athletic performance data; dates of attendance; degrees, honors and awards received; artwork or course work displayed by the district; schools or school districts previously attended; and photographs, videotapes, digital images and recorded sound unless such records would be considered harmful or an invasion of privacy.

*Limited Directory Information* – In addition to general directory information, the following information the district maintains about a personally identifiable student may be disclosed to parent groups or booster clubs that are recognized by the Board and are created solely to work with the district, its staff, students and parents and to raise funds for district activities; parents of other students enrolled in the same school as the student whose information is released; students enrolled in the same school as the student whose information is released; governmental entities including, but not limited to, law enforcement, the juvenile office and the Children's Division (CD) of the Department of Social Services; student's address, telephone number and e-mail address and the parents' addresses, telephone numbers and e-mail addresses.

**There is no need to return this form if you wish to allow the District to release your child's directory information as described above.**

If you **do not** want SPS to disclose directory information from your child's education records without your prior written consent, you must notify SPS by indicating your preference below and submitting this form to the student's school **within the first two weeks of the new school year or within 10 days of the student's enrollment.**

- ☐ 1. Do not release to any persons, groups or entities, including news media. (This would exclude the student's name and photo from lists and school publications such as newspaper articles, honor roll, athletic lists, yearbook, etc.)
- ☐ 2. Do not release to any solicitor, commercial interest, or business.
- ☐ 3. Do not release to any military recruiters.
- ☐ 4. Do not release to any college or university.
- ☐ 5. Do not release to the U.S. Department of Education (Free Application for Federal Student Aid)

School Year \_\_\_\_\_ Student's Name \_\_\_\_\_

\_\_\_\_\_  
Parent, Guardian, or Eligible Student's Signature

\_\_\_\_\_  
Date

Revised 7/24



# ACCEPTABLE TECHNOLOGY USE AGREEMENT

## Agreement Contents

- **Intent of district provided technology**
- **Student use of internet application and educational technology**
- **District provided internet access**
- **Student and parental device responsibilities**
- **Optional device damage waiver for district issued computing devices**
- **Student behavior guidelines**

### **Intent of district provided technology**

The School District of Springfield R-12 (“District”) provides all students a district issued computing device. The intent of providing this technology is to provide students modern learning tools to enhance the learning opportunities and environment. Students may have access to additional technology opportunities as part of the educational programming offered.

### **Student use of internet applications and educational technology**

Students are required to use various applications throughout the school day. These could include various websites, browser extensions, and educational technology tools. Some of these require student accounts and logins, while others do not. The District is committed to complying with Federal laws governing student safety and privacy while online. These Federal laws include the Children’s Online Privacy Protection Act (COPPA), and the Family Educational Rights and Privacy Act (FERPA).

In order for the District to provide your student with the most effective web-based tools for learning, we shall abide by Federal COPPA Regulations that require parental permission. Our District utilizes several computer and web-based apps and services operated not by the District, but by third parties. These parties include: Google Workspace for Education, and other similar educational programs and apps which are listed on our instance of the Learn Platform <https://sps.app.learnplatform.com/new/public>. This platform is where we actively maintain the currently approved list that have met with both our SPS standards and federal guidelines such as COPPA, and FERPA.

In order for students to use some of these programs and services, basic personal identifying information, including student’s name, user name, and email address must be provided to the website operator. In many of these cases, access to these websites and resources is provided through a teacher account, and is monitored by the teacher using the resource.

### **Artificial Intelligence**

**What is Artificial Intelligence?** Artificial Intelligence (AI) is the capability of a machine to imitate intelligent human behavior. A specific type of AI is Generative AI, which is using an AI tool to generate content on behalf of a human. Tools that utilize AI to generate content, such as ChatGPT, have become increasingly popular as new technologies have emerged. The integration of Artificial Intelligence (AI) in education starts with the understanding that, while a powerful tool, AI is not a replacement for human intelligence or the process of learning. Inappropriately using Generative AI is typically where students find themselves in violation of academic honesty guidelines. If students have questions regarding the use of AI in a particular class, the best place to start is by asking the teacher.

**Appropriate Uses of AI: Brainstorming, grammar, spelling check, language translation outside of world language classes, digital image search**

**Inappropriate Uses of AI: Essay generator, language translator on a world language class assignment, generating answers to assignments**

### **District provided internet access**

The District will provide students access to the Internet in multiple ways. The District educational network will provide filtered internet access while on school premises. All District Chromebooks are filtered regardless of network. The District will make available filtered Internet hotspots to under-resourced students as part of the Access for All program.

The District uses Children's Internet Protection Act (CIPA) compliant filtering technology to provide a safe and secure learning environment. To provide opportunities for students to explore personal learning opportunities offered by complete access to the Internet, it is impossible to filter all inappropriate content. Students and parents are warned that users may, either intentionally or unintentionally, access textual, graphic, and/or auditory information which is pornographic, sexually explicit, illegal, defamatory, and otherwise offensive to the user or others. Access to the above material is strictly prohibited.

### **Student and parental device responsibilities**

A district issued computing device will be provided to all students. Students and parents are responsible for the care of this device upon issuance until collection. Damage to this device will result in charges to the student in accordance with Board approved student fees.

Below are how Chromebook damages are categorized.

#### **Accidental Damage:**

Definition: Damage caused unintentionally by the student, where there is no evidence of negligence or intent to harm the device.

- PK-8 Grades: No fines will be assigned for accidental damages.
- 9-12 Grades: Accidental damage charges will still apply as per the fee structure outlined in Section 3.

#### **Malicious Damage:**

Definition: Damage resulting from intentional harm, negligence, or misuse of the device.

- All Grades (PK-12): Malicious damage charges will apply. The determination of malicious damage is made by the school administrator and the fee structure is outlined in Section 3.

Below are how payments and appeals are processed.

#### **Payment Process:**

- Fees will be added to the student's account and parents/guardians will be notified through email.
- Payments can be made through MySchoolBucks or directly at the school office.

#### **Appeals Process:**

- If parents/guardians or students believe that a charge has been incorrectly assigned, they may file an appeal with the school their student is currently attending.
- The school administrator, in consultation with the Technology department, will review the appeal and make a final decision.

District issued computing devices may be taken home at the discretion of the student's building staff and/or the student's parent or guardian. Devices taken home are expected to be returned to school fully charged and ready to be used in the learning environment. Parents have the option of requesting their student's district issued computing device remain at the school building.

District issued computing devices are district property. As such, use of district issued computing devices, even off school premises, still fall under the acceptable technology usage agreement. District issued computing devices are filtered and internet activity tracked using CIPA compliant filtering software. Inappropriate use of a district issued computing device off school premises may result in disciplinary action as specified in the Springfield School District Student Handbook.

Your signature on this AUP Agreement constitutes your consent for the District to provide limited personal identifying information for your child consisting of first name, last name, email address, student ID number, and user name to the following educational web-operators: Google Apps for Education, and the operators of additional web-based educational programs which the District may deem necessary during the upcoming academic school year. A listing of

the websites and apps approved for use by the District, along with links to the privacy policy for each can be found online in the LearnPlatform, <https://sps.app.learnplatform.com/new/public>.

### **Student behavior guidelines**

1. Users shall not access, view, transfer, or store any material in any form which is pornographic, sexually explicit, illegal, defamatory, or potentially offensive to others;
2. Users who unintentionally access such material shall immediately terminate such access;
3. Users shall not harass, insult, or attack others;
4. Users shall not damage computers, computer systems, computer networks, or computer data;
5. Users shall not use another user's login;
6. Users shall not trespass in the folders, work, files, or data of others;
7. Users shall not intentionally waste user time and resources;
8. Users shall not use Internet access for any commercial activity;
9. Users shall not use Internet access for political lobbying;
10. Users shall abide by all federal, state, or local laws;
11. Users shall not enter into non-educational chat rooms on the Internet;
12. Users shall act as good digital citizens and comply with district expectations.

### **Internet Access Waiver**

☐ I am the parent or legal guardian of the student named below ("Student"). Permission is NOT granted for my student to have the District default filtered access to the internet. The waiver excludes district online curriculum, related district approved curriculum tools, required state online assessments and required district online assessments. These exclusions include Google Workspace for Education and approved applications found in the Learn Platform, <https://sps.app.learnplatform.com/new/public>. Additional resources may be added as district curricular resources and mandated assessments change.

---

Parent or Legal Guardian Signature

Date

---

Name of Student (print)

Grade level of student



# BLACKBOARD CONNECT NOTIFICATION SYSTEM

## Student Information Sheet

The Blackboard Connect Notification System enables Springfield Public Schools to contact parents via telephone and text with important announcements about emergencies or important school events. The success of Blackboard Connect is dependent upon accurate contact information for each student. Parents must complete this form for each student and return it to their child's school to receive messages.

### Telephone Messages

1. Caller ID will display the school's main number or a district number (417-523-0110).
2. Be sure to say "Hello" when you answer the phone. The technology must hear a voice to deliver a message. Blackboard Connect will leave a message on any answering machine or voicemail.
3. Calls with information about school cancellations will be made to the primary and secondary contact phone numbers only. When inclement weather occurs overnight causing school to be canceled, calls will be made between 6-6:30 a.m. Announcements of weather cancellations will also be made via District website, text, MySPS app, Facebook, Twitter and local news media.
4. Students who divide their time between different residences (ex. divorced parents) must list one residence as the primary and the other as the secondary for both parents to receive general announcement information.

### Text Messages

1. After your text enabled phone number is uploaded into the system, you will receive a confirmation text.
2. Text enabled phone numbers listed as the Primary Contact below will automatically receive text messages. Instructions to opt out will be included in the first text you receive.
3. Text messages will come from 23177 or 63079. Please save these numbers as Springfield Public Schools in your contacts so you can quickly recognize our messages.
4. Text messages will be used for school cancellations/emergency notifications.

### Please PRINT information

Student ID Number	Last Name (Student)	First Name (Student)	Grade

	Name	Phone Number	Opt-In for Text
<b>Primary Contact</b> <i>This person will receive informational and priority phone messages <u>and</u> text messages.</i>		( _ _ _ ) _ _ _ - _ _ _ _	<i>Text enabled numbers listed as the <u>primary number</u> will automatically receive text messages.</i>
<b>Secondary Contact</b> <i>This person will receive both informational and priority phone messages.</i>		( _ _ _ ) _ _ _ - _ _ _ _	
<b>Emergency Contact #1</b>		( _ _ _ ) _ _ _ - _ _ _ _	
<b>Emergency Contact #2</b>		( _ _ _ ) _ _ _ - _ _ _ _	
<b>Emergency Contact #3</b>		( _ _ _ ) _ _ _ - _ _ _ _	





# TRANSCRIPT/RECORDS REQUEST (CURRENT STUDENT)

## THE SCHOOL DISTRICT OF SPRINGFIELD R-12

### Important Information for Parents

Students under the age of 18 must have parent/guardian approval to request that a transcript be sent from the school to a post-secondary institution, scholarship agency or employer. A parent/guardian may sign each individual request, or may complete this form which will authorize their student to make all requests during the school year.

Since the ACT and SAT are voluntary tests, the scores will not automatically be included.

Student Name: \_\_\_\_\_ Student ID: \_\_\_\_\_ Date: \_\_\_\_\_  
(please print)

I give permission for my student to authorize all transcript requests during the 2024-2025 school year.

Parent/Guardian Signature: \_\_\_\_\_ Date \_\_\_\_\_

(PLEASE RETURN THIS FORM TO THE COUNSELING OFFICE AT YOUR HIGH SCHOOL)

\_\_\_\_\_

An official transcript will be mailed to the Institution(s)/Organizations(s) listed below:

Name and Address of Institution/Organization

Check all that apply

\_\_\_\_\_

\_\_\_\_\_

\_\_\_\_\_

\_\_\_\_\_

\_\_\_\_\_

\_\_\_\_\_

\_\_\_\_\_

- ☐ Transcript with ACT/SAT scores
- ☐ Transcript without ACT/SAT scores
- ☐ Online application completed
- ☐ Paper application attached



# CITIZENSHIP STANDARDS FOR ELIGIBILITY

**\*\*Acknowledgement of Standards:** Eligibility standards shall be acknowledged and signed off annually through Final Forms by student and parent.

Student activities in the Springfield Public Schools provide a program for students to pursue special interests in addition to the more formal class activities. Student activities help develop leadership abilities, promote school spirit and loyalty, establish habits of good citizenship, and provide opportunities to learn to work as a part of a group. Although student activities are important for the all-around development for students they must necessarily be of secondary importance. Regular classroom work must come first.

The Springfield Public Schools Activity Program has traditionally been represented by excellent students who are outstanding citizens. Only a few students make errors in judgment which makes necessary a review of their citizenship.

Students who represent a school in interscholastic activities must be creditable citizens and judged so by the proper school authority certifying a list of students for competition. Those students whose character or conduct is such as to reflect discredit upon themselves or their schools are not considered "creditable citizens." Conduct shall be satisfactory in accord with the standards of good discipline. (MSHSAA Official Handbook, By-Law 2.2.1)

A student should not be considered eligible while under suspension. The student who is expelled or who withdraws from school because of disciplinary measures shall not be considered eligible for 365 days from the date of expulsion or withdrawal. (MSHSAA Official Handbook, By-Laws 2.2.3 & 2.2.4)

The following citizenship standards for eligibility have been approved by the Springfield Public Schools Board of Education and are applicable to any student who represents their school.

## CITIZENSHIP STANDARDS FOR PARTICIPATION IN STUDENT ACTIVITIES PROGRAM

Participation in student activities is a privilege and not a right. Creditable citizenship shall be one of the criteria for participation in school activities. Creditable citizenship includes such things as regular and punctual attendance and a quality of conduct which promotes the best interests of school. Therefore, students shall exhibit standards of behavior which will bring credit to the student, the activities, the school and the community.

The Board insists that the student behavior shall be in compliance with School Board policy, Student/Parent Handbook Discipline Code and Regulations and with public laws. Repeated referrals of a student to the office of assistant principal or to the principal, (or any other person having general responsibility for discipline in the school) for misbehavior may be sufficient reason to declare a student ineligible. A single serious breach of good conduct, either in or out of school, may also be sufficient cause for declaring a student ineligible to participate in a school activity. Behavior not in compliance may result in suspension or expulsion from all extracurricular activities. While it is not possible to cite every example of behavior that violates policies, regulations, or public laws, there are certain behaviors that are more frequently a problem for school systems than others and will be addressed herein, as follows:

- A minimum fourteen (14) calendar day suspension from participation in the activities program will be assessed for a violation of district discipline standards which result in an out-of-school suspension; and/or for a serious breach of good conduct away from school which is verified to the satisfaction of the Administration;
- A minimum twenty-eight (28) calendar day suspension from participation in the activities program will be assessed for a violation of the Student Alcohol/Drug Abuse Policy, JFCH, and/or for conduct similar to that prohibited in Policy JFCH that occurs away from school and results in a summons being issued to the student, or charges being filed in court against the student or conduct which is verified to the satisfaction of the Administration.

Athletic suspensions for an in-season violation will start immediately. If the number of days served cannot be covered in the current in-season sport/activity, the remaining days will be served in the next sport/activity starting the first day of allowable competition.

An out of season violation suspension will start the first day of allowable competition after the violation for the next sport/activity the student athlete is involved in. NOTE: If a student-athlete quits a sport after serving their violation the suspension will start over with their next sport/activity.

**\*\*A second violation of the citizenship standard will result in expulsion from the activities program for the remainder of the school year.**

The board will monitor the district's extracurricular activities program, through the authority it extends to the Superintendent and principals, to authorize and administer it in keeping with these Board-approved regulations. Springfield Public School District Policies Cross Referenced: IGD, District Sponsored Extracurricular Activities & Groups; IGAEA Teaching About Drugs, Alcohol, Tobacco; IGDA, Student-Initiated Group Use of District Facilities; IGDF, Student Fund Raising Activities; AH, Use of Tobacco Products and Imitation Tobacco Products; JEC, Student Admission; JFCH, Student Alcohol/Drug Abuse; JG, Student Discipline; JGD, Student Suspension & Expulsion; JGE, Discipline of Students with Disabilities.

The School Board also believes that consistent administration is important from school to school, and from activity to activity, and that appropriate due process procedures must be followed before any student is suspended from participation.

Each individual coach or sponsor, after consulting with the principal or his/her designee, has the authority to decide whether or not a student will be allowed to practice with a team or school sponsored group while that student's eligibility is suspended.

Unsportsmanlike Acts: Unsportsmanlike acts during a contest resulting in ejection of an athlete shall, in most cases, result in the athlete being restricted from representing the school for at least the next contest. An athlete who commits such an act, but is not ejected may also be subject to at least a one game suspension. Each case of this type shall be reviewed by the head coach, the athletic director, and the principal, before a final decision is made.

In addition to these standards, students must abide by the rules and regulations of the Missouri State High School Activities Association. The following rules are included in the rules to the MSHSAA Official Handbook, and are listed here to help students and parents understand state requirements and to help avoid a misunderstanding which could lead to violations of eligibility standards.

1. A student who misses a class on the date of a contest, without being excused by his/her principal, shall not be considered eligible to represent his/her school on that date.
2. Any student who withdraws from school because of disciplinary measures shall not be eligible for any interscholastic activity for one full year from the date of withdrawal.
- 3a. Per MSHSAA by-law 2.3.2, A student in grades 9-12 must have earned, the preceding semester of attendance, a minimum of 3.0 units of credit or have earned credit in 80% of the maximum allowable classes in which a student can be enrolled in the semester, whichever is greater, and shall currently be enrolled in and regularly attending courses that offer 3.0 units of credit or 80% of the maximum allowable credits which may be earned, whichever is greater CHS, PHS, GHS, HHS, KHS – **3.5 units of credit**, or a student must be enrolled in a full course at his/her level in a special education program for the handicapped approved by the Missouri State Department of Education which, though ungraded, enrolls pupils of equivalent age, and that student must have made standard progress for his/her or her level the preceding semester. A beginning 9th grade student shall have been promoted from the 8th grade to the 9th grade for first semester eligibility. A student must be making satisfactory progress towards graduation as determined by local school policies.

Dual Enrollment in College Classes:

- For High School Credit: A student who is dual enrolled in high school and college classes being taken off campus with credit being placed on the high school transcript, may only count up to two full credits earned from the college classes toward academic eligibility and must be enrolled in and regularly attending the remainder of classes at the high school.
  - No High School Credit: A student who is dually enrolled in college and high school classes but who does not receive high school credit on his/her high school transcript for the college work, may have college hours earned during a regular semester count up to a maximum of 1 unit of credit toward determining high school eligibility as follows. 1/2 unit of high school credit for a 3 hour college credit class: 1 unit of high school credit for a 5 hour college credit class.
- 3b. A student in grades 6-8 who failed more than one scheduled subject, or failed to make standard progress in special education, shall be ineligible the following grading period regardless of promotion to the higher grade. Additionally, a student shall be currently enrolled in and regularly attending the normal course for that grade or must have enrolled in a full course at his or her level in any public school special education program for the handicapped approved by the Missouri State Department of Education which, though ungraded, enrolls pupils of equivalent chronological age. A beginning 6th grade student shall have been promoted from the 5th grade to the 6th grade for first quarter eligibility. A beginning 7th grade student shall have been promoted from the 6th grade to the 7th grade for first quarter eligibility. A student must be making satisfactory progress as determined by local school policies.
  - 4a. A junior high or senior high student may be eligible at the public or nonpublic school located in the district in which the student's parents reside. In the case of a public school district with multiple high schools, a student may be eligible only at the school in which the parents' address corresponds to the geographical attendance area for that school. If a student attends a school outside of their attendance district the student shall have sub-varsity eligibility for 365 days. If enrollment is continuous in this school for 365 days the student shall be granted unrestricted eligibility.
  - 4b. Transfer at Promotion: A student may be eligible immediately at the school of his/her choice upon first entering when:
    - The student is promoted from the fifth grade to sixth grade, sixth grade to the seventh grade, and eighth grade to the ninth grade.
    - The student completes the highest grade in an elementary school that is not a part of the system supporting high school (K-8), provided the student is eligible in all other respects.
  5. Non-school competition: Before competing in any non-school competition, check with your coach or member of the administration.
  - 6a. The school shall require of each student before the student is allowed to practice or participate, a physician's certificate stating that he or she is physically able to participate in athletic contests of his/her school.
  - 6b. A student shall not be permitted to practice or compete for a school until it has verification that he or she has basic athletic insurance coverage.

Please sign off on these standards through Final Forms. No student will be allowed to participate in any interscholastic activity or school-related activities before the public until this form is signed by student and parent.. This signed citizenship policy will remain in effect for 365 days from the signed date.

# Your Child's Learning. Our Technology.

At Springfield Public Schools, three key systems are used to connect caretakers with their student's information: Canvas, ConnectSPS and Home Access Center. Learn more about each tool below.

## Tools to Know



### Canvas

Canvas is your portal to your child's digital learning resources. From class announcements to upcoming assignments, students in grades 6-12 utilize this tool frequently. Follow along and connect with your child's learning on Canvas as a Canvas Observer.

If you do not have a Canvas Observer account, please contact the virtual learning office at [\(417\) 523-0417](tel:417-523-0417) for assistance.

[springfieldpublicschools.instructure.com](https://springfieldpublicschools.instructure.com)



### Home Access Center

Home Access Center (HAC) is a web-based portal for parents and legal guardians of SPS students to view student information, including grades, online. Parents of multiple SPS students need only one HAC account if all students are linked. Beginning in Fall 2024, Canvas and HAC grades will sync daily.

To retrieve or reset a HAC username or password, please contact your school's office for assistance.

[www.sps.org/HAC](https://www.sps.org/HAC)



### ConnectSPS

ConnectSPS is a web-based portal for parents and legal guardians of SPS students to enroll, submit bus registration and request immediate or transitional transfers. For parents to log in to ConnectSPS, they must use their HAC User ID and password.

To retrieve or reset a ConnectSPS username or password, please contact your school's office for assistance.

[connect.sps.org](https://connect.sps.org)

## Tool Directory

### Canvas

- Digital assignments
- eBook resources
- Check grades

### Home Access Center

- Access attendance
- View student schedule
- Check grades

### ConnectSPS

- Enroll in SPS
- Immediate transfer requests
- Transitional transfer requests
- Bus registration



# Stay Informed

From field trip reminders sent by your child's teacher to school cancellations, these are the tools you'll need to **stay in the know all school year long.**

## From Your Teacher/School



**Seesaw App**  
Grades preK-5



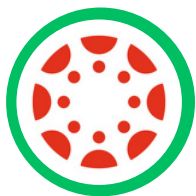
**Email**  
All Grades



**Remind App**  
Grades 6-12



**Phone/Text**  
All Grades



**Canvas**  
All Grades



**Sports You**  
Grades 6-12  
*for clubs and sports*

## From SPS



**"The Latest" e-newsletter  
& other emails**  
All Grades



**Phone/Text**  
All Grades



**MySPS App**  
All Grades